

# NERI

Brenta  
Illuminating Bollard  
Size XL

Fixing: On ground  
Source: LED-P

Technical sheet  
Rev.02 - 2018/12/06  
Preliminary

## DESCRIPTION

### Compliance

- In compliance with: EN 60598-1; EN 60598-2-3; EN 62031; EN 61347;  
EN 55015; EN 61000-3-2; EN 61000-3-3; EN 61547; UL 1598; FCC CFR-47;  
ANSI C.62.41.



### Mechanical information

Height	Width	Length	Weight	IP	IK	Area
900mm	352mm	305mm	61kg	65	08	0.3 m <sup>2</sup>

### Electrical characteristics

Voltage	Frequency	Cos φ	Insulation class	Operative Temp.
120V-277V	50/60Hz	> 0.9	CL II	-40°C/+45°C

### Fixing

- On the ground  
- Distance between holes 200 mm and Ø15 mm.

### Materials

- Concrete (NeriConcrete)  
- Prismatic flat glass (IK08 - EN 62262).  
- Stainless steel fastening elements.

### NERI CONCRETE

#### Features

NeriConcrete is an HPC concrete (High Performance Concrete), resistant to bending and compression as shown in the table below:

#### Performance

Flexural strength, EN 1015-11	a 28gg	MPa	13
Compressive strength, EN 1015-11	a 28gg	MPa	75

### Realization

NeriConcrete is a flexible mixture able to adapt to any type of mold, obtained by mixing:

- Powders and concrete components;
- Polymeric fibers;
- Colored pigments;
- Water.

### Impermeability

The surface treatment makes NeriConcrete water repellent and anti-stain.

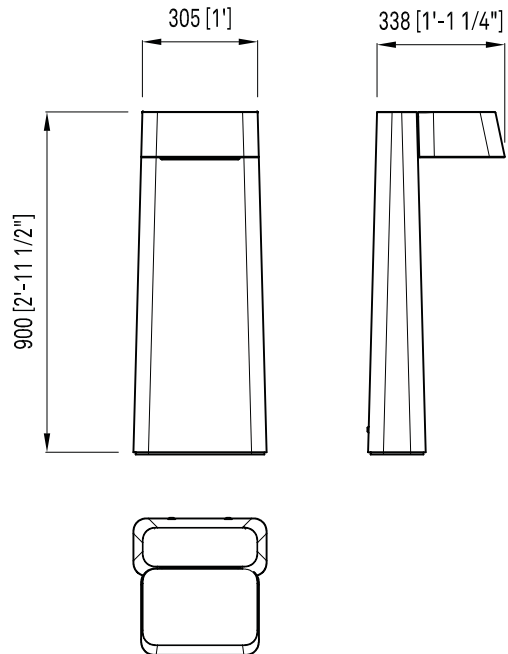
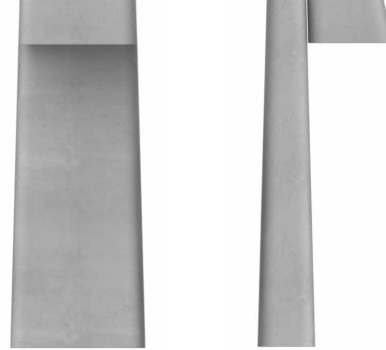
### Operations and maintenance

Use a soft cloth dampened with water and neutral detergents for routine cleaning. Do not use power washing, sandblasting, brushing and scraping, denaturated alcohol, products containing bleach or highly basic pH.

### Finish

- Concrete  
- The smooth finish is the result of a very fluid mixture and the quality and type of the molds used.

## DRAWINGS



# NERI

Brenta  
Illuminating Bollard  
Size XL

Category: Performance  
Type: IV

Technical sheet  
Rev.02 - 2018/12/06  
Preliminary

## DESCRIPTION

### Optic

Lighting distribution	LOR	IES Class
Asymmetric (Type IV)	100%	Cutoff

### Luminous flux

3000K	System*			LED Module		
Cod. YYY	lm	W	lm/W	n.LED	mA	W
-	1321	26	50	18	450	23

### Luminous flux

3000K	System*			LED Module		
Cod. YYY	lm	W	lm/W	n.LED	mA	W
-	1416	26	54	18	450	23

- Light source: power LEDs (DMC Nichia)
- Heat sink in aluminium inside to the cover for optimal control of temperature.
- Estimated life (EN 62722-2-1, LM80 data): L80 B10 80.000h
- Colour Rendering Index: Ra > 80.

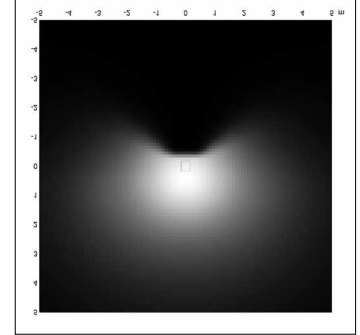
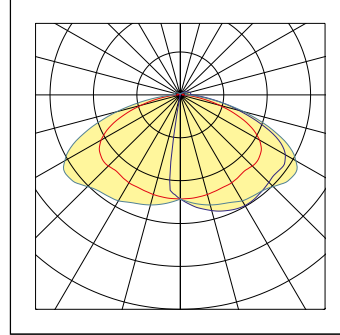
### Driver functions

1-10V

- Electronic power supply
- Standard surge protection for differential/common mode 2kV/2kV (CL I, CL II).
- Estimated life B10 at 100,000 h.

## PHOTOMETRIC CURVES

Type IV - Asymmetric



# NERI

Brenta  
Illuminating Bollard  
Size L

Fixing: On ground  
Source: LED-P

Technical sheet  
Rev.02 - 2018/12/06  
Preliminary

## DESCRIPTION

### Compliance

- In compliance with: EN 60598-1; EN 60598-2-3; EN 62031; EN 61347;  
EN 55015; EN 61000-3-2; EN 61000-3-3; EN 61547; UL 1598; FCC CFR-47;  
ANSI C.62.41.



### Mechanical information

Height	Width	Length	Weight	IP	IK	Area
600mm	305mm	338mm	43kg	65	08	0.3 m <sup>2</sup>

### Electrical characteristics

Voltage	Frequency	Cos φ	Insulation class	Operative Temp.
120V-277V	50/60Hz	> 0.9	CL II	-40°C/+45°C

### Fixing

- On the ground  
- Distance between holes 200 mm and Ø15 mm.

### Materials

- Concrete (NeriConcrete)  
- Prismatic flat glass (IK08 - EN 62262).  
- Stainless steel fastening elements.

### NERICONCRETE

#### Features

NeriConcrete is an HPC concrete (High Performance Concrete), resistant to bending and compression as shown in the table below:

#### Performance

Flexural strength, EN 1015-11	a 28gg	MPa	13
Compressive strength, EN 1015-11	a 28gg	MPa	75

### Realization

NeriConcrete is a flexible mixture able to adapt to any type of mold, obtained by mixing:

- Powders and concrete components;
- Polymeric fibers;
- Colored pigments;
- Water.

### Impermeability

The surface treatment makes NeriConcrete water repellent and anti-stain.

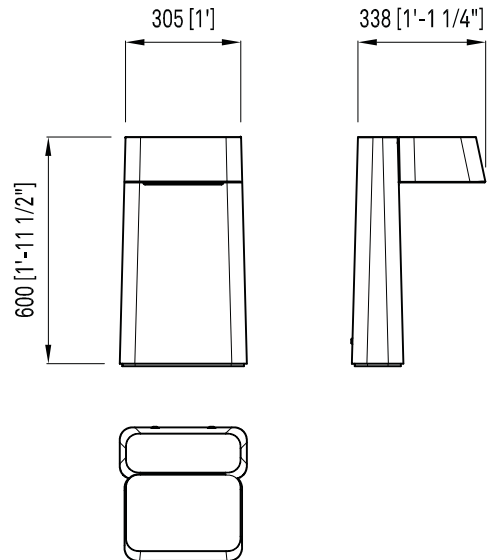
### Operations and maintenance

Use a soft cloth dampened with water and neutral detergents for routine cleaning. Do not use power washing, sandblasting, brushing and scraping, denaturated alcohol, products containing bleach or highly basic pH.

### Finish

- Concrete  
- The smooth finish is the result of a very fluid mixture and the quality and type of the molds used.

## DRAWINGS



## DESCRIPTION

### Optic

Lighting distribution	LOR	IES Class
Asymmetric (Type IV)	100%	Cutoff

### Luminous flux

3000K	System*			LED Module		
Cod. YYY	lm	W	lm/W	n.LED	mA	W
-	1321	26	50	18	450	23

### Luminous flux

3000K	System*			LED Module		
Cod. YYY	lm	W	lm/W	n.LED	mA	W
-	1416	26	54	18	450	23

- Light source: power LEDs (DMC Nichia)
- Heat sink in aluminium inside to the cover for optimal control of temperature.
- Estimated life (EN 62722-2-1, LM80 data): L80 B10 80.000h
- Colour Rendering Index: Ra > 80.

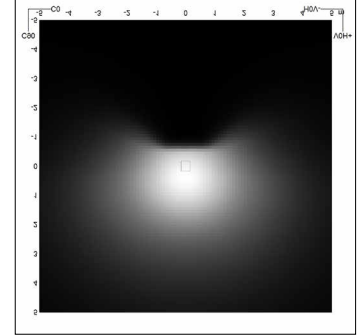
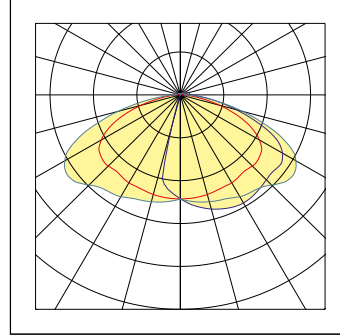
### Driver functions

1-10V

- Electronic power supply
- Standard surge protection for differential/common mode 2kV/2kV (CL I, CL II).
- Estimated life B10 at 100,000 h.

## PHOTOMETRIC CURVES

### Type IV - Asymmetric



# NERI

Brenta  
Illuminating Bollard  
Size M

Fixing: On ground  
Source: LED-P

Technical sheet  
Rev.02 - 2018/12/06  
Preliminary

## DESCRIPTION

### Compliance

- In compliance with: EN 60598-1; EN 60598-2-3; EN 62031; EN 61347;  
EN 55015; EN 61000-3-2; EN 61000-3-3; EN 61547; UL 1598; FCC CFR-47;  
ANSI C.62.41.



### Mechanical information

Height	Width	Length	Weight	IP	IK	Area
600mm	165mm	239mm	19kg	65	08	0.108 m <sup>2</sup>

### Electrical characteristics

Voltage	Frequency	Cos φ	Insulation class	Operative Temp.
120V-277V	50/60Hz	> 0.9	CL II	-40°C/+45°C

### Fixing

- On the ground  
- Distance between holes 120 mm and Ø15 mm.

### Materials

- Concrete (NeriConcrete)  
- Prismatic flat glass (IK08 - EN 62262).  
- Stainless steel fastening elements.

### NERICONCRETE

#### Features

NeriConcrete is an HPC concrete (High Performance Concrete), resistant to bending and compression as shown in the table below:

#### Performance

Flexural strength, EN 1015-11	a 28gg	MPa	13
Compressive strength, EN 1015-11	a 28gg	MPa	75

### Realization

NeriConcrete is a flexible mixture able to adapt to any type of mold, obtained by mixing:

- Powders and concrete components;
- Polymeric fibers;
- Colored pigments;
- Water.

### Impermeability

The surface treatment makes NeriConcrete water repellent and anti-stain.

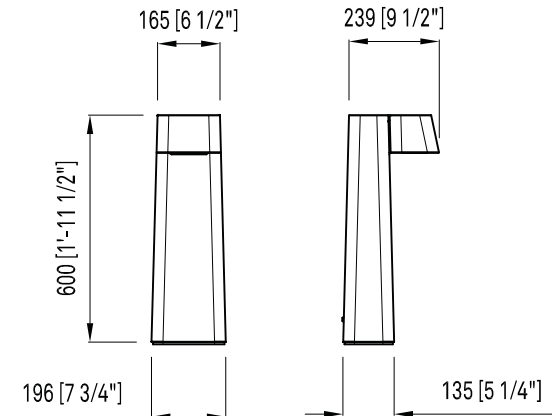
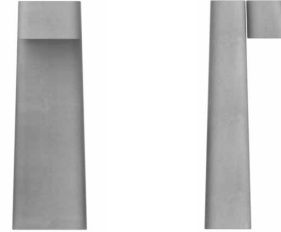
### Operations and maintenance

Use a soft cloth dampened with water and neutral detergents for routine cleaning. Do not use power washing, sandblasting, brushing and scraping, denaturated alcohol, products containing bleach or highly basic pH.

### Finish

- Concrete  
- The smooth finish is the result of a very fluid mixture and the quality and type of the molds used.

## DRAWINGS



# NERI

Brenta  
Illuminating Bollard  
Size M

Category: Performance  
Type: II

Technical sheet  
Rev.02 - 2018/12/06  
Preliminary

## DESCRIPTION

### Optic

Lighting distribution	LOR	IES Class
Asymmetric (Type II)	100%	Cutoff

### Luminous flux

3000K Cod. YYY	System*			LED Module		
	lm	W	lm/W	n.LED	mA	W
-	966	13	76	2	450	11

### Luminous flux

3000K Cod. YYY	System*			LED Module		
	lm	W	lm/W	n.LED	mA	W
-	1036	13	82	2	450	11

- Light source: power LEDs (XHP-50.2 CREE)
- Heat sink in aluminium inside to the cover for optimal control of temperature.
- Estimated life (EN 62722-2-1, LM80 data): L80 B10 80.000h
- Colour Rendering Index: Ra > 80.

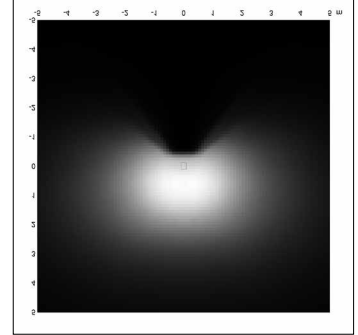
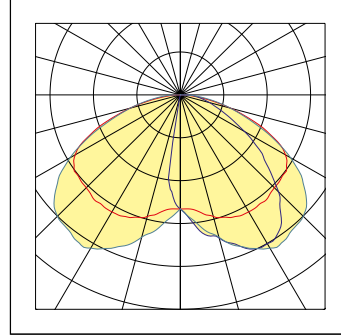
### Driver functions

1-10V

- Electronic power supply
- Standard surge protection for differential/common mode 2kV/2kV (CL I, CL II).
- Estimated life B10 at 100,000 h.

## PHOTOMETRIC CURVES

Type II - Asymmetric



# NERI

Brenta  
Illuminating Bollard  
Size S

Fixing: On ground  
Source: LED-P

Technical sheet  
Rev. 02 - 2018/12/06  
Preliminary

## DESCRIPTION

### Compliance

- In compliance with: EN 60598-1; EN 60598-2-3; EN 62031; EN 61347;  
EN 55015; EN 61000-3-2; EN 61000-3-3; EN 61547; UL 1598; FCC CFR-47;  
ANSI C.62.41.



### Mechanical information

Height	Width	Length	Weight	IP	IK	Area
300mm	165mm	239mm	11kg	65	08	0.052 m <sup>2</sup>

### Electrical characteristics

Voltage	Frequency	Cos φ	Insulation class	Operative Temp.
120V-277V	50/60Hz	> 0.9	CL II	-40°C/+45°C

### Fixing

- On the ground  
- Distance between holes 100 mm and Ø15 mm.

### Materials

- Concrete (NeriConcrete)  
- Prismatic flat glass (IK08 - EN 62262).  
- Stainless steel fastening elements.

## NERICONCRETE

### Features

NeriConcrete is an HPC concrete (High Performance Concrete), resistant to bending and compression as shown in the table below:

### Performance

Flexural strength, EN 1015-11	a 28gg	MPa	13
Compressive strength, EN 1015-11	a 28gg	MPa	75

### Realization

NeriConcrete is a flexible mixture able to adapt to any type of mold, obtained by mixing:

- Powders and concrete components;
- Polymeric fibers;
- Colored pigments;
- Water.

### Impermeability

The surface treatment makes NeriConcrete water repellent and anti-stain.

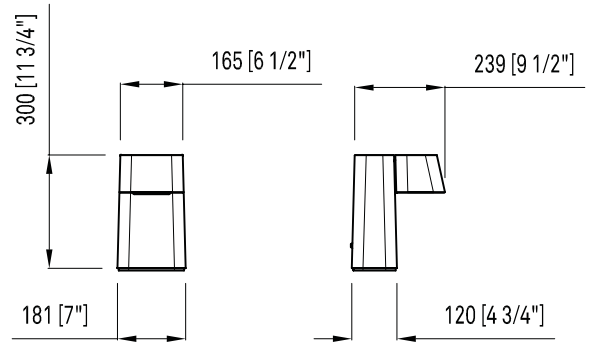
### Operations and maintenance

Use a soft cloth dampened with water and neutral detergents for routine cleaning. Do not use power washing, sandblasting, brushing and scraping, denaturated alcohol, products containing bleach or highly basic pH.

### Finish

- Concrete  
- The smooth finish is the result of a very fluid mixture and the quality and type of the molds used.

## DRAWINGS



# NERI

Brenta  
Illuminating Bollard  
Size S

Category: Performance  
Type: II

Technical sheet  
Rev.02 - 2018/12/06  
Preliminary

## DESCRIPTION

### Optic

Lighting distribution	LOR	IES Class
Asymmetric (Type II)	100%	Cutoff

### Luminous flux

3000K	System*			LED Module		
Cod. YYY	lm	W	lm/W	n.LED	mA	W
-	987	13	78	2	450	11

### Luminous flux

3000K	System*			LED Module		
Cod. YYY	lm	W	lm/W	n.LED	mA	W
-	1058	13	83	2	450	11

- Light source: power LEDs (XHP-50.2 CREE)
- Heat sink in aluminium inside to the cover for optimal control of temperature.
- Estimated life (EN 62722-2-1, LM80 data): L90 B10 80.000h
- Colour Rendering Index: Ra > 80.

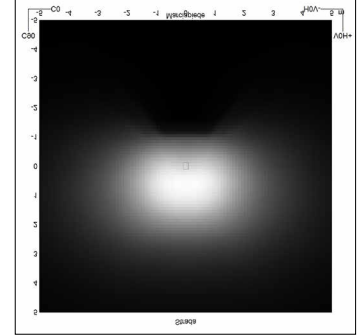
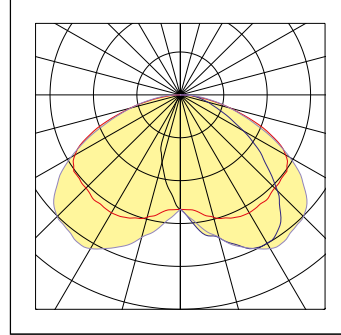
### Driver functions

1-10V

- Electronic power supply
- Standard surge protection for differential/common mode 2kV/2kV (CL I, CL II).
- Estimated life B10 at 100,000 h.

## PHOTOMETRIC CURVES

Type II - Asymmetric





# NERI

Brenta  
Wall mounted luminaire  
Size L

Fixing: Wall mounted  
Source: LED-P

Technical sheet  
Rev. 02 - 2018/12/06  
Preliminary

## DESCRIPTION

### Compliance

- In compliance with: EN 60598-1; EN 60598-2-3; EN 62031; EN 61347;  
EN 55015; EN 61000-3-2; EN 61000-3-3; EN 61547; UL 1598; FCC CFR-47;  
ANSI C.62.41.



### Mechanical information

Height	Width	Length	Weight	IP	IK	Area
120mm	305mm	232mm	11kg	65	08	0.036 m <sup>2</sup>

### Electrical characteristics

Voltage	Frequency	Cos φ	Insulation class	Operative Temp.
120V-277V	50/60Hz	> 0.9	CL II	-40°C/+45°C

### Fixing

- Wall mounted  
- Distance between holes 140 mm and Ø11 mm.

### Materials

- Concrete (NeriConcrete)  
- Prismatic flat glass (IK08 - EN 62262).  
- White flat glass.  
- Stainless steel fastening elements.

### NERICONCRETE

#### Features

NeriConcrete is an HPC concrete (High Performance Concrete), resistant to bending and compression as shown in the table below:

#### Performance

Flexural strength, EN 1015-11	a 28gg	MPa	13
Compressive strength, EN 1015-11	a 28gg	MPa	75

#### Realization

NeriConcrete is a flexible mixture able to adapt to any type of mold, obtained by mixing:  
- Powders and concrete components;  
- Polymeric fibers;  
- Colored pigments;  
- Water.

#### Impermeability

The surface treatment makes NeriConcrete water repellent and anti-stain.

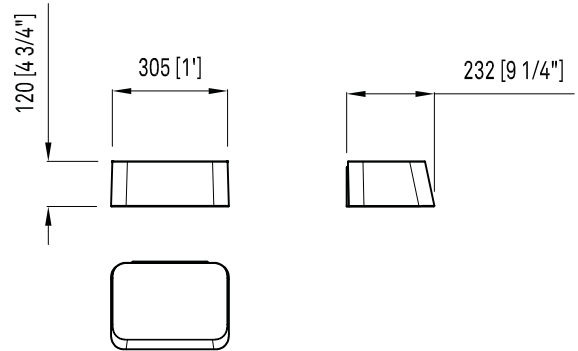
#### Operations and maintenance

Use a soft cloth dampened with water and neutral detergents for routine cleaning. Do not use power washing, sandblasting, brushing and scraping, denaturated alcohol, products containing bleach or highly basic pH.

#### Finish

- Concrete  
- The smooth finish is the result of a very fluid mixture and the quality and type of the molds used.

## DRAWINGS



# NERI

Brenta  
Wall mounted luminaire  
Size L

Category: Performance  
Type: IV-V

Technical sheet  
Rev. 02 - 2018/12/06  
Preliminary

## DESCRIPTION

### Optic

Lighting distribution		LOR	IES Class
Asymmetric (Type IV)	Prismatic glass		Cutoff
Rotosymmetric (Type V)	White glass		Cutoff

### Luminous flux

3000K	System*			LED Module		
Screen	lm	W	lm/W	n.LED	mA	W
Prismatic	1314	26	50	18	450	23
White	1011	26	37	18	450	23

### Luminous flux

3000K	System*			LED Module		
Screen	lm	W	lm/W	n.LED	mA	W
Prismatic	1408	26	54	18	450	23
White	1040	26	40	18	450	23

- Light source: power LEDs (DMC Nichia)
- Heat sink in aluminium inside to the cover for optimal control of temperature.
- Estimated life (EN 62722-2-1, LM80 data): L80 B10 80.000h
- Colour Rendering Index: Ra > 80.

### Driver functions

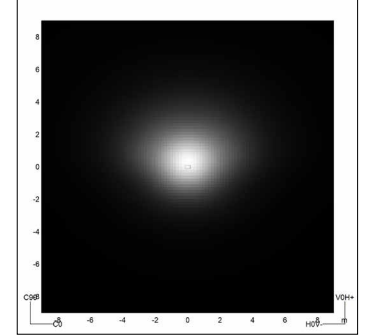
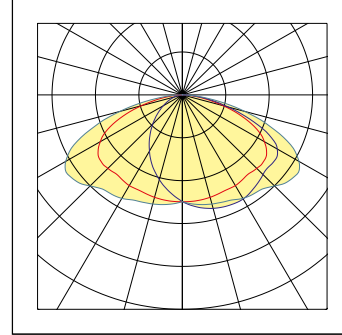
1-10V

- Electronic power supply
- Standard surge protection for differential/common mode 2kV/2kV (CL I, CL II).
- Estimated life B10 at 100,000 h.

## PHOTOMETRIC CURVES

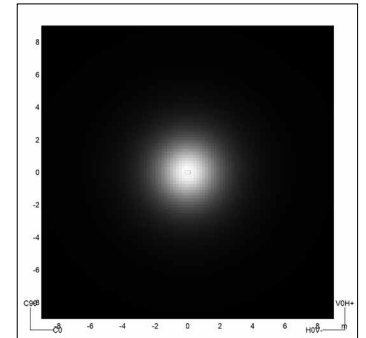
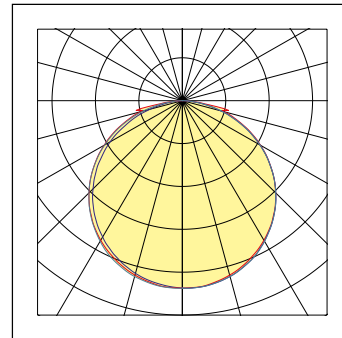
### Prismatic glass

#### Type IV - Asymmetric



### White glass

#### Type V - Rotosymmetric



# NERI

Brenta  
Wall mounted luminaire  
Size S

Fixing: Wall mounted  
Source: LED-P

Technical sheet  
Rev.02 - 2018/12/06  
Preliminary

## DESCRIPTION

### Compliance

- In compliance with: EN 60598-1; EN 60598-2-3; EN 62031; EN 61347;  
EN 55015; EN 61000-3-2; EN 61000-3-3; EN 61547; UL 1598; FCC CFR-47;  
ANSI C.62.41.



### Mechanical information

Height	Width	Length	Weight	IP	IK	Area
100mm	165mm	134mm	3.25kg	65	08	0.016 m <sup>2</sup>

### Electrical characteristics

Voltage	Frequency	Cos φ	Insulation class	Operative Temp.
120V-277V	50/60Hz	> 0.9	CL II	-40°C/+45°C

### Fixing

- Wall mounted
- Distance between holes 70 mm and Ø11 mm.

### Materials

- Concrete (NeriConcrete)
- Prismatic flat glass (IK08 - EN 62262).
- White flat glass.
- Stainless steel fastening elements.

### NERICONCRETE

#### Features

NeriConcrete is an HPC concrete (High Performance Concrete), resistant to bending and compression as shown in the table below:

#### Performance

Flexural strength, EN 1015-11	a 28gg	MPa	13
Compressive strength, EN 1015-11	a 28gg	MPa	75

### Realization

NeriConcrete is a flexible mixture able to adapt to any type of mold, obtained by mixing:

- Powders and concrete components;
- Polymeric fibers;
- Colored pigments;
- Water.

### Impermeability

The surface treatment makes NeriConcrete water repellent and anti-stain.

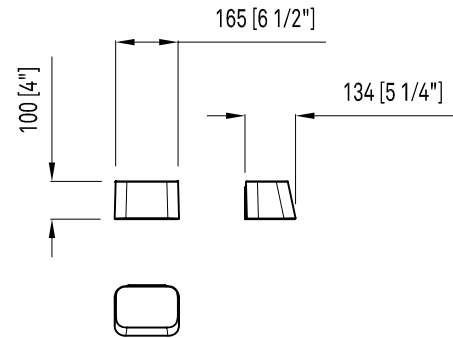
### Operations and maintenance

Use a soft cloth dampened with water and neutral detergents for routine cleaning. Do not use power washing, sandblasting, brushing and scraping, denaturated alcohol, products containing bleach or highly basic pH.

### Finish

- Concrete
- The smooth finish is the result of a very fluid mixture and the quality and type of the molds used.

## DRAWINGS



# NERI

Brenta  
Wall mounted luminaire  
Size S

Category: Performance  
Type: II

Technical sheet  
Rev. 02 - 2018/12/06  
Preliminary

## DESCRIPTION

### Optic

Lighting distribution		LOR	IES Class
Asymmetric (Type II)	Prismatic glass		Cutoff
Asymmetric (Type II)	White glass		Cutoff

### Luminous flux

3000K	System*			LED Module		
Screen	lm	W	lm/W	n.LED	mA	W
Prismatic	1023	13	79	2	450	11
White	730	13	56	2	450	11

### Luminous flux

3000K	System*			LED Module		
Screen	lm	W	lm/W	n.LED	mA	W
Prismatic	1095	13	84	2	450	11
White	780	13	60	2	450	11

- Light source: power LEDs (XHP-50.2 CREE)
- Heat sink in aluminium inside to the cover for optimal control of temperature.
- Estimated life (EN 62722-2-1, LM80 data): L90 B10 80.000h
- Colour Rendering Index: Ra > 80.

### Driver functions

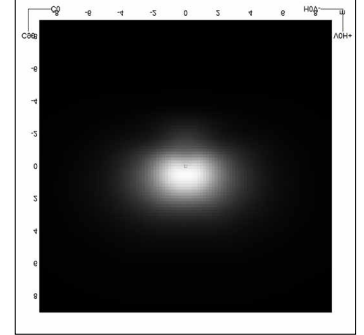
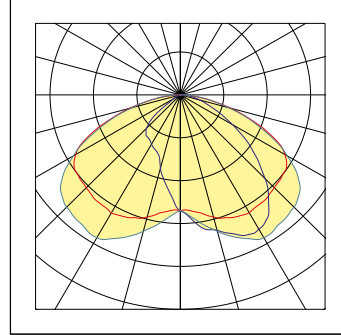
1-10V

- Electronic power supply
- Standard surge protection for differential/common mode 2kV/2kV (CL I, CL II).
- Estimated life B10 at 100,000 h.

## PHOTOMETRIC CURVES

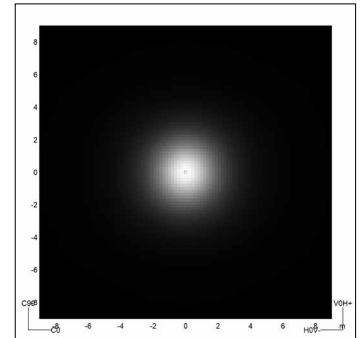
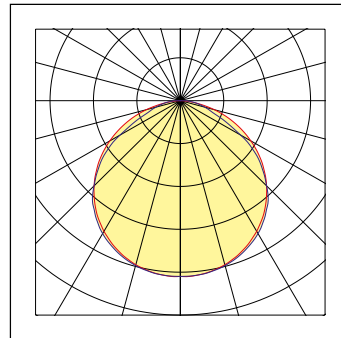
### Prismatic glass

Type II - Asymmetric



### White glass

Type II - Asymmetric



# NERI

Brenta  
Illuminated bench  
Size L

Fixing: On ground  
LED strip

Technical sheet  
Rev. 02 - 2018/12/06  
Preliminary

## DESCRIPTION

### Compliance

- In compliance with: EN 60598-1; EN 60598-2-3; EN 62031; EN 61347;  
EN 55015; EN 61000-3-2; EN 61000-3-3; EN 61547; UL 1598; FCC CFR-47;  
ANSI C.62.41.



### Mechanical information

Height	Width	Length	Weight	IP	IK	Area
500mm	1287mm	537mm	120kg	65	08	199.477m <sup>2</sup>

### Electrical characteristics

Voltage	Frequency	Cos φ	Insulation class	Operative Temp.
120V-240V	50/60Hz	> 0.9	CL II	-40°C/+45°C

### Fixing

- On the ground  
- Distance between holes 1200 mm x 130 mm (n.4 holes M10).

### Materials

- Concrete (NeriConcrete)  
- Stainless steel fastening elements.

### NERI CONCRETE

#### Features

NeriConcrete is an HPC concrete (High Performance Concrete), resistant to bending and compression as shown in the table below:

#### Performance

Flexural strength, EN 1015-11	a 28gg	MPa	13
Compressive strength, EN 1015-11	a 28gg	MPa	75

### Realization

NeriConcrete is a flexible mixture able to adapt to any type of mold, obtained by mixing:

- Powders and concrete components;
- Polymeric fibers;
- Colored pigments;
- Water.

### Impermeability

The surface treatment makes NeriConcrete water repellent and anti-stain.

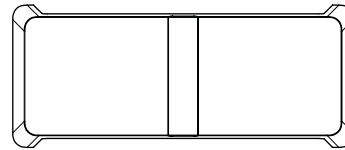
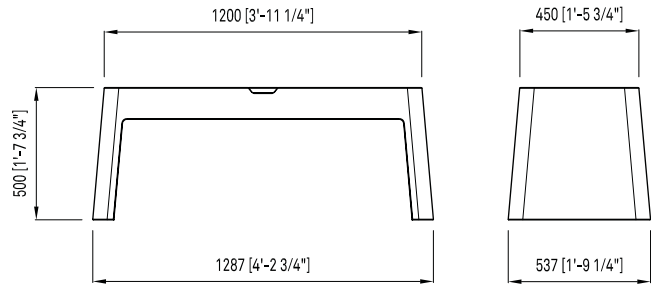
### Operations and maintenance

Use a soft cloth dampened with water and neutral detergents for routine cleaning. Do not use power washing, sandblasting, brushing and scraping, denaturated alcohol, products containing bleach or highly basic pH.

### Finish

- Concrete  
- The smooth finish is the result of a very fluid mixture and the quality and type of the molds used.

## DRAWINGS



# NERI

Brenta  
Illuminated bench  
Size L

Category: Decorative

Technical sheet  
Rev.02 - 2018/12/06  
Preliminary

## DESCRIPTION

### Optic

- LED strip

### Luminous flux

3000K	System*			LED Module		
Cod. YYY	lm	W	lm/W	n.LED	mA	W
-	134	7	19	2 strip	24	6

### Luminous flux

3000K	System*			LED Module		
Cod. YYY	lm	W	lm/W	n.LED	mA	W
-	134	7	19	2 strip	24	6

- Light source: Prismatic LED strip
- Heat sink in aluminium inside to the cover for optimal control of temperature.
- Estimated life (EN 62722-2-1, LM80 data): L80 B10 80.000h
- Colour Rendering Index: Ra > 80.

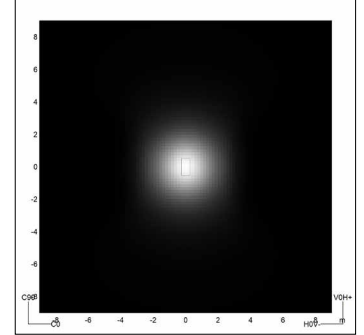
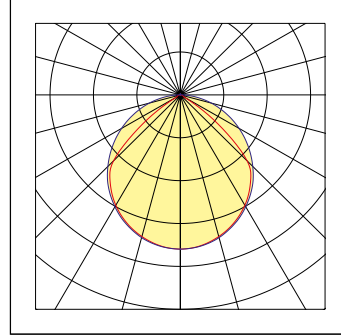
### Driver functions

1-10V

- Electronic power supply
- Standard surge protection for differential/common mode 6kV/8kV (CL I, CL II).
- Estimated life B10 at 80,000 h.

## PHOTOMETRIC CURVES

### LED strip



# NERI

Brenta  
Illuminated bench  
Size S

Fixing: On ground  
LED strip

Technical sheet  
Rev. 02 - 2018/12/06  
Preliminary

## DESCRIPTION

### Compliance

- In compliance with: EN 60598-1; EN 60598-2-3; EN 62031; EN 61347;  
EN 55015; EN 61000-3-2; EN 61000-3-3; EN 61547; UL 1598; FCC CFR-47;  
ANSI C.62.41.



### Mechanical information

Height	Width	Length	Weight	IP	IK	Area
500mm	537mm	537mm	72kg	65	08	116.292m <sup>2</sup>

### Electrical characteristics

Voltage	Frequency	Cos φ	Insulation class	Operative Temp.
120V-240V	50/60Hz	> 0.9	CL II	-40°C/+45°C

### Fixing

- On the ground  
- Distance between holes 455mm x 130mm (n.4 holes M10).

### Materials

- Concrete (NeriConcrete)  
- Stainless steel fastening elements.

### NERI CONCRETE

#### Features

NeriConcrete is an HPC concrete (High Performance Concrete), resistant to bending and compression as shown in the table below:

#### Performance

Flexural strength, EN 1015-11	a 28gg	MPa	13
Compressive strength, EN 1015-11	a 28gg	MPa	75

### Realization

NeriConcrete is a flexible mixture able to adapt to any type of mold, obtained by mixing:

- Powders and concrete components;
- Polymeric fibers;
- Colored pigments;
- Water.

### Impermeability

The surface treatment makes NeriConcrete water repellent and anti-stain.

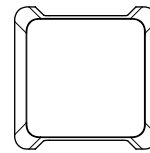
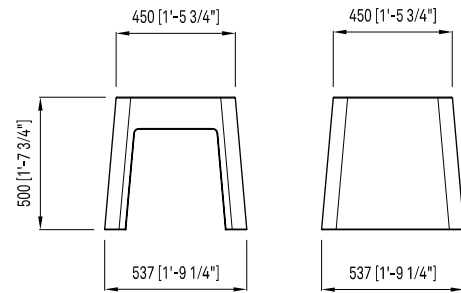
### Operations and maintenance

Use a soft cloth dampened with water and neutral detergents for routine cleaning. Do not use power washing, sandblasting, brushing and scraping, denaturated alcohol, products containing bleach or highly basic pH.

### Finish

- Concrete
- The smooth finish is the result of a very fluid mixture and the quality and type of the molds used.

## DRAWINGS



# NERI

Brenta  
Illuminated bench  
Size S

Category: Decorative

Technical sheet  
Rev.02 - 2018/12/06  
Preliminary

## DESCRIPTION

### Optic

- LED strip

### Luminous flux

3000K	System*			LED Module		
Cod. YYY	lm	W	lm/W	n.LED	mA	W
-	63	4	18	1 strip	24	3

### Luminous flux

3000K	System*			LED Module		
Cod. YYY	lm	W	lm/W	n.LED	mA	W
-	63	4	18	1 strip	24	3

- Light source: Prismatic LED strip
- Heat sink in aluminium inside to the cover for optimal control of temperature.
- Estimated life (EN 62722-2-1, LM80 data): L80 B10 80.000h
- Colour Rendering Index: Ra > 80.

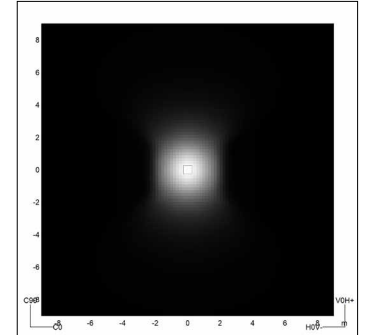
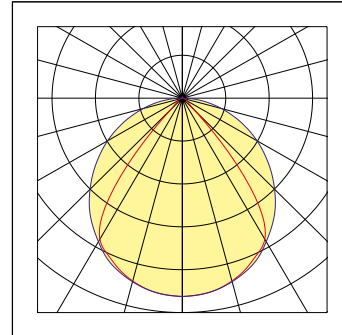
### Driver functions

1-10V

- Electronic power supply
- Standard surge protection for differential/common mode 6kV/8kV (CL I, CL II).
- Estimated life B10 at 80,000 h.

## PHOTOMETRIC CURVES

### LED strip





# NERI

Brenta  
Planter  
Size L

Fixing: On ground  
Source: LED-P

Technical sheet  
Rev. 02 - 2018/12/06  
Preliminary

## DESCRIPTION

### Compliance

- In compliance with: EN 60598-1; EN 60598-2-3; EN 62031; EN 61347;  
EN 55015; EN 61000-3-2; EN 61000-3-3; EN 61547; UL 1598; FCC CFR-47;  
ANSI C.62.41.



### Mechanical information

Height	Width	Length	Weight	IP	IK	Area
945mm	507mm	507mm	100kg	65	08	116,292mm <sup>2</sup>

### Electrical characteristics

Voltage	Frequency	Cos φ	Insulation class	Operative Temp.
120V-240V	50/60Hz	> 0.9	CL II	-40°C/+45°C

### Fixing

- On the ground  
- Distance between holes 185mm x 185mm (n.4 holes M10).

### Materials

- Concrete (NeriConcrete)  
- Stainless steel fastening elements.

### NERICONCRETE

#### Features

NeriConcrete is an HPC concrete (High Performance Concrete), resistant to bending and compression as shown in the table below:

#### Performance

Flexural strength, EN 1015-11	a 28gg	MPa	13
Compressive strength, EN 1015-11	a 28gg	MPa	75

### Realization

NeriConcrete is a flexible mixture able to adapt to any type of mold, obtained by mixing:

- Powders and concrete components;
- Polymeric fibers;
- Colored pigments;
- Water.

### Impermeability

The surface treatment makes NeriConcrete water repellent and anti-stain.

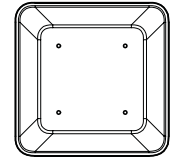
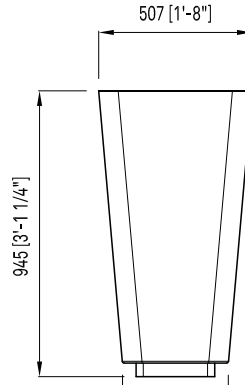
### Operations and maintenance

Use a soft cloth dampened with water and neutral detergents for routine cleaning. Do not use power washing, sandblasting, brushing and scraping, denaturated alcohol, products containing bleach or highly basic pH.

### Finish

- Concrete  
- The smooth finish is the result of a very fluid mixture and the quality and type of the molds used.

## DRAWINGS



## DESCRIPTION

### Optic

- LED strip

### Luminous flux

3000K	System*			LED Module		
Cod. YYY	lm	W	lm/W	n.LED	mA	W
UP	294	12	25	4 strip	24	10
DOWN	195	9	22	4 strip	24	8

### Luminous flux

3000K	System*			LED Module		
Cod. YYY	lm	W	lm/W	n.LED	mA	W
UP	294	12	25	4 strip	24	10
DOWN	195	9	22	4 strip	24	8

- Light source: Prismatic LED strip
- Heat sink in aluminium inside to the cover for optimal control of temperature.
- Estimated life (EN 62722-2-1, LM80 data): L80 B10 80.000h
- Colour Rendering Index: Ra > 80.

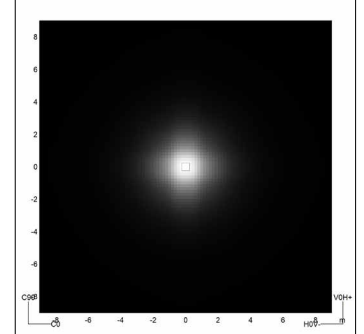
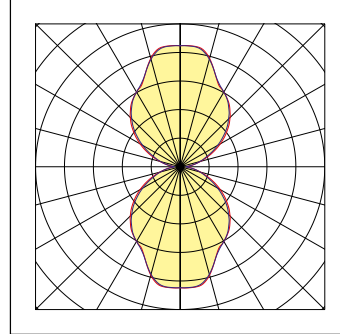
### Driver functions

1-10V

- Electronic power supply
- Standard surge protection for differential/common mode 6kV/8kV (CL I, CL II).
- Estimated life B10 at 80,000 h.

## PHOTOMETRIC CURVES

### LED strip



# NERI

Brenta  
Planter  
Size M

Categoria: Performance  
Sorgente: LED strip

Technical sheet  
Rev.02 - 2018/12/06  
Preliminary

## DESCRIPTION


### Compliance

- In compliance with: EN 60598-1; EN 60598-2-3; EN 62031; EN 61347;  
EN 55015; EN 61000-3-2; EN 61000-3-3; EN 61547; UL 1598; FCC CFR-47;  
ANSI C.62.41.

### Mechanical information

Height	Width	Length	Weight	IP	IK	Area
645mm	507mm	507mm	57kg	65	08	116,292mm <sup>2</sup>

### Electrical characteristics

Voltage	Frequency	Cos φ	Insulation class	Operative Temp.
120V-240V	50/60Hz	> 0.9	CL II 	-40°C/+45°C

### Fixing

- On the ground  
- Distance between holes 185mm x 185mm (n.4 holes M10).

### Materials

- Concrete (NeriConcrete)  
- Stainless steel fastening elements.

### NERICONCRETE

#### Features

NeriConcrete is an HPC concrete (High Performance Concrete), resistant to bending and compression as shown in the table below:

#### Performance

Flexural strength, EN 1015-11	a 28gg	MPa	13
Compressive strength, EN 1015-11	a 28gg	MPa	75

### Realization

NeriConcrete is a flexible mixture able to adapt to any type of mold, obtained by mixing:

- Powders and concrete components;
- Polymeric fibers;
- Colored pigments;
- Water.

### Impermeability

The surface treatment makes NeriConcrete water repellent and anti-stain.

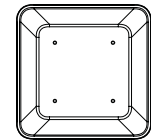
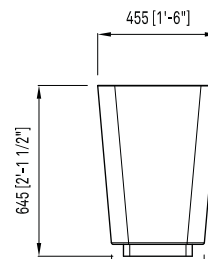
### Operations and maintenance

Use a soft cloth dampened with water and neutral detergents for routine cleaning. Do not use power washing, sandblasting, brushing and scraping, denaturated alcohol, products containing bleach or highly basic pH.

### Finish

- Concrete
- The smooth finish is the result of a very fluid mixture and the quality and type of the molds used.

## PHOTOMETRIC CURVES



## DESCRIPTION

### Optic

- LED strip

### Luminous flux

3000K	System*			LED Module		
Cod. YYY	lm	W	lm/W	n.LED	mA	W
UP	294	12	25	4 strip	24	10
DOWN	195	9	22	4 strip	24	8

### Luminous flux

3000K	System*			LED Module		
Cod. YYY	lm	W	lm/W	n.LED	mA	W
UP	294	12	25	4 strip	24	10
DOWN	195	9	22	4 strip	24	8

- Light source: Prismatic LED strip
- Heat sink in aluminium inside to the cover for optimal control of temperature.
- Estimated life (EN 62722-2-1, LM80 data): L80 B10 80.000h
- Colour Rendering Index: Ra > 80.

### Driver functions

1-10V

- Electronic power supply
- Standard surge protection for differential/common mode 6kV/8kV (CL I, CL II).
- Estimated life B10 at 80,000 h.

## PHOTOMETRIC CURVES

### LED strip

