

Compliance

CE certificated post, compliant with standard UNI EN 40-5. 

Description

Lamp post in UNI EN 1561 cast iron and UNI EN10219-1 steel, hot-galvanized to UNI EN ISO 1461 standards, composed as follows:

Post (A) in steel with a circular cross-section, hot-galvanized, made up a tube with dimensions $\varnothing 89 \times 3700$ mm. The post is designed to be attached to a foundation plinth (P) by means of a flange ($\varnothing 216$ mm - thickness 15 mm). It is provided with an M10 earthing bolt, a slot (B – height 132×38 mm) for the installation of a class II insulation terminal board with or without fuse. An hatch (C) in die-cast aluminum for cover the slot (B) with protection rating IP54. The top of the post has six M10 screws (Z) for securing a suspension bracket fitted into the post.

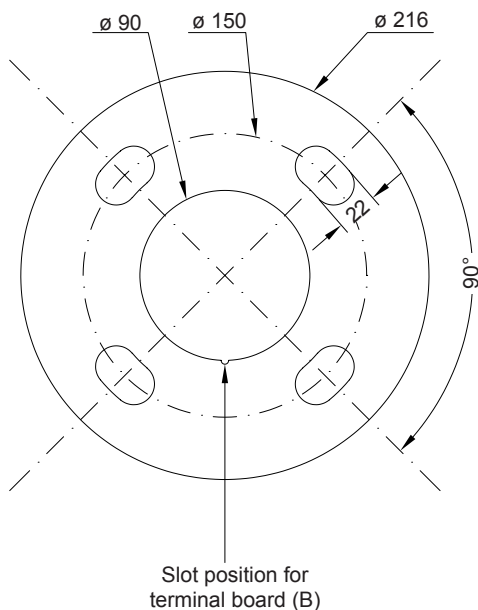
1°) Base in cast iron decorated height 200 mm (diam. 260 mm), with a torus and a cylindrical section to form a junction for the steel post. The top of the base has three M8 stainless steel grubscrews for securing it to the post.

The total height is 3700 mm.

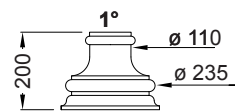
Total weight is 53 Kg.

Protection of surfaces

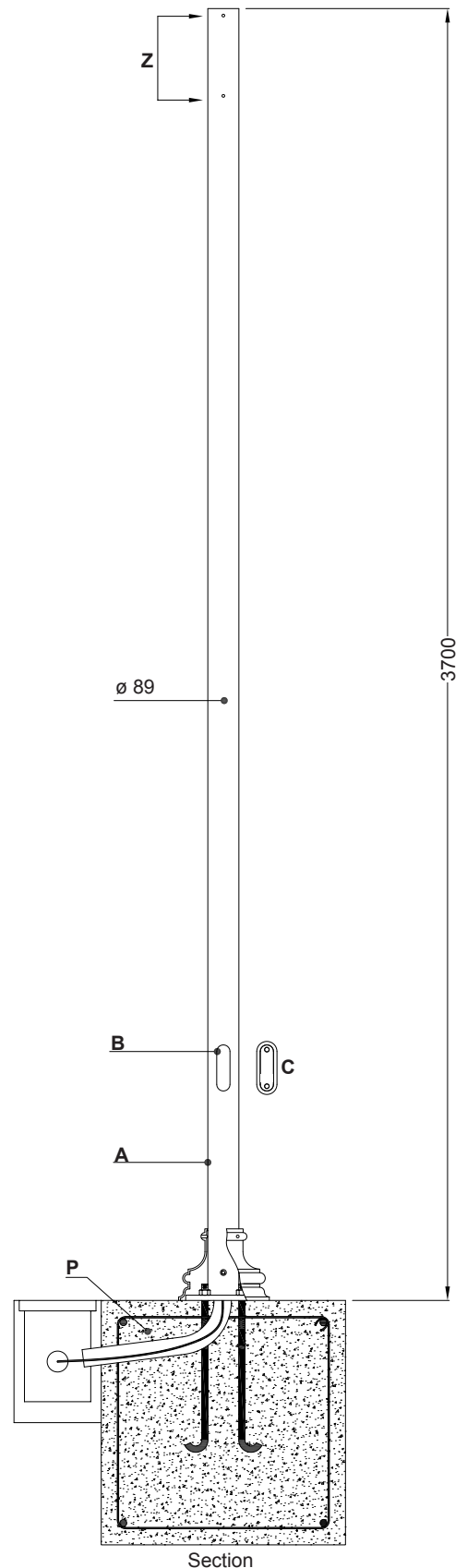
Please refer to the specification on painting procedures of the materials.



Flange plan
Scale 1:4



Exploded



Section

NB: The measurements are in millimeters.

Neri S.p.A. Property - Any reproduction and use for its own purposes is forbidden.