

DESCRIPTION

Compliance

- Conforme alle norme EN60598-2-3; EN60598-1; EN62031; EN55015; EN61547; EN 61000-3-2; EN 61000-3-3.



Informazioni meccaniche

Height	Width	Length	Weight	IP	IK	Area (S)
75mm	525mm	685mm	16Kg	66	10	0,046 m ²

Electrical characteristics

Voltage	Frequency	Cos φ	Insulation class	Operative Temp.
220-240V	50/60Hz	> 0,9	CL II	-35... +40°C

- Classe I of insulation (on request).

Fixing

- Suitable for head pole or side mounting on tube from Ø 48 mm.
- Special lateral mounting on tops and poles of the Matar system:
 - top 4102.135.001 (1 arm)
 - top 4202.235.001 (2 arms)
 - top 4102.135.003 (1 arm)
 - top 4102.135 (1 arm)
 - top 4202.235 (2 arms).

Materials

- Die-cast and sheet aluminum (UNI EN 1706).
- Silk-printed extra-clear transparent flat glass.
- Stainless steel fasteners.

Structure – Main components

- Perimeter band in sheet metal.
- Lower aluminum tilting frame to access the auxiliary and optical compartment.
- Silicone gasket between the lower and upper frames.

Electrical auxiliaries

- Support plates for LED module and wiring easily removables.
- Plate wiring with appropriate space for auxiliary devices of remote management.
- Automatic electrical disconnecter when opening.
- Terminals for wires with a max. section of 2.5 mm².
- Input power cable with with waterproof membrane.

Operations and maintenance

- During maintenance operations no screw or component is separated from the structure.
- Replaceable components in full (Driver).
- Please refer to the installation and maintenance manual of the product.
- It is responsibility of the installer the correct installation and electric connection in accordance with applicable regulations.

Finish

- Standard colour: Neri Gray.
- Paint system (see specific technical sheet).

Code costruction

- To create the complete code of the configuration, insert sequential parts of the code on the configuration of the:

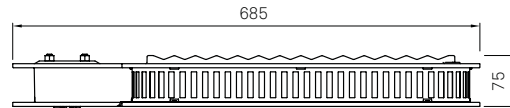
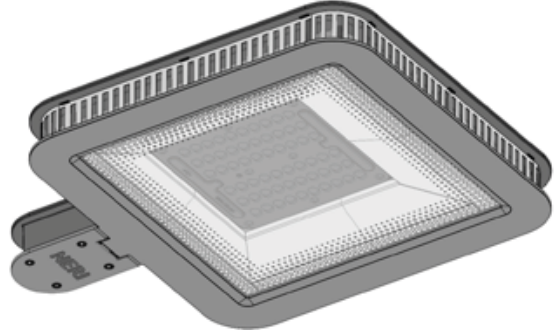
- xx - Optic
- yyy - Luminous flux
- zz - Driver

Example: MNMATL xx yyy zz → MNMATL171D302

Accessories

- Perimeter band in metal sheet with rectangular eyelets to cover a band in opaline bi-satin blue PMMA (technical sheet code 0006.124).

DRAWINGS



DESCRIPTION

Optic

Cod. XX	Lighting distribution	LOR	IES Class
17	Roadways and mixed areas (Type IV)	100%	Full Cutoff
20	Roadways – Side road installation (Type II)	100%	Full Cutoff
21	Roadways with sidewalk (Type III)	100%	Full Cutoff
22	Roadways with sidewalk (Type III)	100%	Full Cutoff

- LOR: optical efficiency appliance due to the physical shielding.
- Refractive modular lens 2x2 in PMMA.
- High efficiency reflector in pre-anodized aluminum for flux recovery and glare reduction.
- Minimum installation height: 2,6 meters.
- Max installation height: over 15 meters.

Luminous flux

3000K	System*			LED module		
Cod. YYY	lm	W	lm/W	n.LED	mA	W
1R2	6.000	52	115	32	466	44
1R3	9.000	76	118	32	720	68
1R4	12.000	104	115	48	635	90
1R5	14.000	128	109	64	609	115

Luminous flux

4000K	System*			LED module		
Cod. YYY	lm	W	lm/W	n.LED	mA	W
3R2	6.000	46	130	32	434	41
3R3	9.000	70	129	32	667	63
3R4	12.000	96	125	48	607	86
3R5	14.000	113	124	48	706	100
3R6	18.000	154	117	64	730	138

- * The energetic values in the table are referred to the complete system.
- Internal heat sink in cast aluminium in continuity with external frame.
 - Efficiency of individual LEDs: 166 lm/W (4000K) - 150 lm/W (3000K) a 85°C, 350mA.
 - Estimated life: 100.000 h (L85 - Ta 25°C): 100.000h L85B50 (Tq = 25°C)
 - Colour Rendering Index: CRI > 70 within the 5 ellipses of Mac Adam.
 - Photobiological risk (IEC/TR 62778): class RG1 to class RG2 at 3m from source.
 - Photobiological risk (EN62471): class RG0 over 3,9m.

Driver

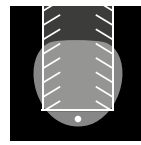
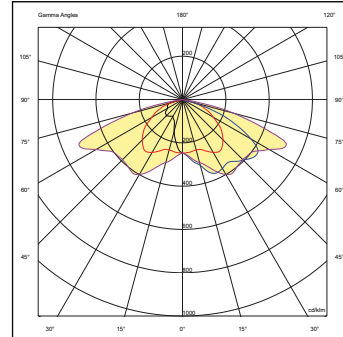
Cod. ZZ	Driver functions
02	1-10V + NCL (Analogic control + Neri costant lumen)
06	DALI + NCL (Digital control + Neri costant lumen)
14	NVL6H + NCL (autodimming -30% x 6h + Neri costant lumen)

- Programmable electronic power supply with auto self diagnostics functions.
- Standard surge protection for differential/common mode 6kV/10kV (CL I, CL II) and 10kV/10kV (CL I, CL II) in presence of additional protections (on demand).
- Estimated life B10 at 100,000 h.

PHOTOMETRIC CURVES

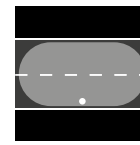
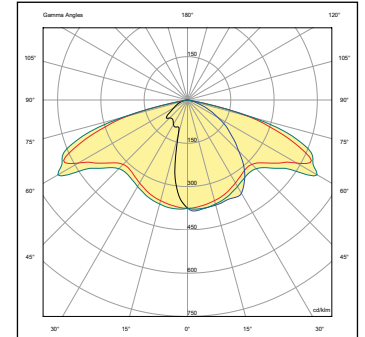
Type IV (NLG 17)

Roadways and mixed areas



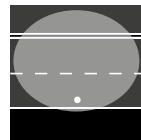
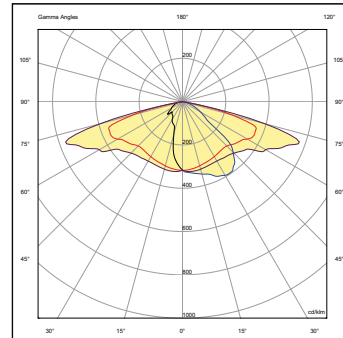
Type II (NLG 20)

Roadways – Side road installation



Type III (NLG 21)

Roadways with sidewalk



Type III (NLG 22)

Roadways with sidewalk

