

## DESCRIPTION

### Compliance

- In compliance with EN 60598-1; EN 60598-2-3; EN 62031; EN 55015 EMC; EN 61547 EMC; EN 62471



### Dimensions - Area - Weight

Height	Width	Lenght	Diametre	Area exposed to wind (S)	Weight
700 mm			470 mm	0.216 m²	12.5 Kg

### Electrical characteristics

Voltage	Frequency	P. Rating IP	CL II	CL I	Cos $\Phi$	Operative Temp.
120-277V	50-60 Hz	43	●	○	> 0.9	-30°C...+40°C

### Connection

- Flange with a hole diam. 28 mm, on bottom frame.
- Suitable for head post.

### Materials

- Die-cast and sheet aluminum (UNI EN 1706).
- Acrylic frosted transparent screen.
- Stainless steel fasteners.

### Structure - Main components

- Upper tilting frame with circular shaped plant with a decorative pineapple, hinged to the lower frame.
- Bottom frame composed by a ring, three curved uprights decorated, fixed to an element of base with a hole (28 mm) for fixing to support. Electric cable inside at a curved upright.
- Screen in a single piece made in acrylic (PMMA) frosted transparent.
- Shock resistance: IK06 (EN 62262).

### Electrical auxiliaries

- Programmable electronic power supply for LED module.
- Automatic disconnect switch when opening.
- Terminals for wires with a max. section of 2,5 mm².

### Operations and maintenance

- To opening the light fixture and access to wiring and optic compartment unscrew two screws on the upper frame and rotate it.
- Automatic disconnect switch when opening.
- Separate electronic driver from LED module, individually replaceable.
- During installation, follow the instructions for the correct orientation on the support.
- Periodic maintenance for the external cleaning of the structure and the screens from dust and smog (the operations must be performed with the line power off and with luminaire cold).

### Painting

- Standard color is dark gray, type Neri.
- Information about paint steps used on this product in specific technical sheet.

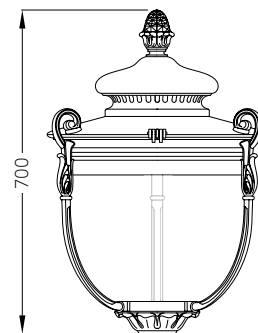
### Symbols

- ● : standard characteristics
- ○ : On request characteristics

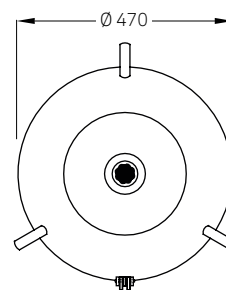
### Code costruction

- To create the complete code of the configuration, insert sequential parts of the code on the configuration of the optics (XX) , LED modules (YYY) and functions of the power supply (ZZ). Example: **PN500L02 1P4 02**
- Classe I of insulation (in this case the product code is to be requested).

## DRAWINGS AND TECHNICAL INFORMATIONS



Front view



Plan view



### DESCRIPTION

#### Optics

Cod. XX	Type	Lighting class	Class IES
<b>02</b>	Refractive lens	C/P - road lighting and mixed areas	Cutoff
<b>06</b>	Refractive lens	C/P - rotosymmetrical for mixed areas	Cutoff

- Refractive lens in polycarbonate, UV resistant. Shock resistance: IK10.
- Protection rating optic compartment: IP66.
- Height of installation: from 3.5 to 5.5 meters.

#### LED Module

3000K				
Cod. YYY		lm	W	lm/W
<b>1P2</b>	○	2.500	27	80
<b>1P4</b>	●	3.500	39	77
<b>1P6</b>	●	4.500	53	73

4000K				
Cod. YYY		lm	W	lm/W
<b>3P2</b>	○	2.500	26	83
<b>3P4</b>	○	3.500	36	84
<b>3P6</b>	○	4.500	48	81

- The energetic values in the table are referred to the complete system.
- Power LEDs module on printed circuit board with metal core plate.
- NTC sensor on LED plate for control of dangerous temperatures.
- Estimated life: 100.000 h (L80 - Ta 25°C).
- Colour Rendering Index: CRI > 70
- Minimum efficiency of individual LEDs: > of 100 lm/W
- No photobiological risk at distance: > 1.6 meters (EN 62471).

#### Power supply - characteristics and functions

Cod. ZZ	Functions
<b>02</b>	● 1-10V + NCL (Analogic control + Neri costant lumen)
<b>06</b>	● DALI + NCL (Digital control + Neri costant lumen)
<b>14</b>	● NVL6H + NCL (autodimming -30% x 6h + Neri costant lumen)

- Programmable electronic power supply with auto self diagnostics functions.
- Protected against short circuit, over-temperature and over-voltages up to 4 kV.
- Estimated life B10 a 80.000 h.

#### Symbols

- ● : standard characteristics
- ○ : On request characteristics

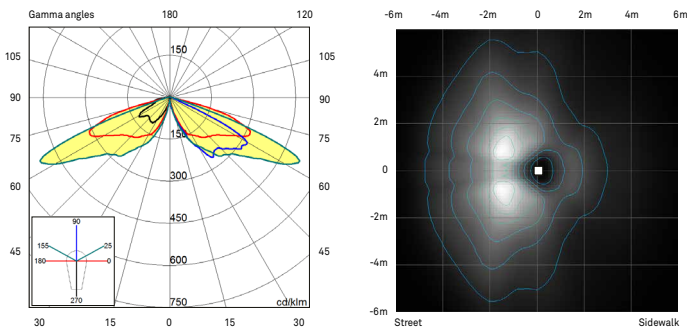
#### Code construction

- To create the configuration code, insert sequential parts of the code of the optical configuration (XX) + LED module (YYY) + power supply functions (ZZ), to be added to the base code of the light fixture.

### PHOTOMETRIC CURVES

#### Optic mod. 02 with screens in PMMA frosted transparent.

Road and mixed area - Lighting classes C/P - Cutoff



#### Optic mod. 06 with screens in PMMA frosted transparent.

Rotosymmetrical for mixed area - Lighting classes C/P - Cutoff

