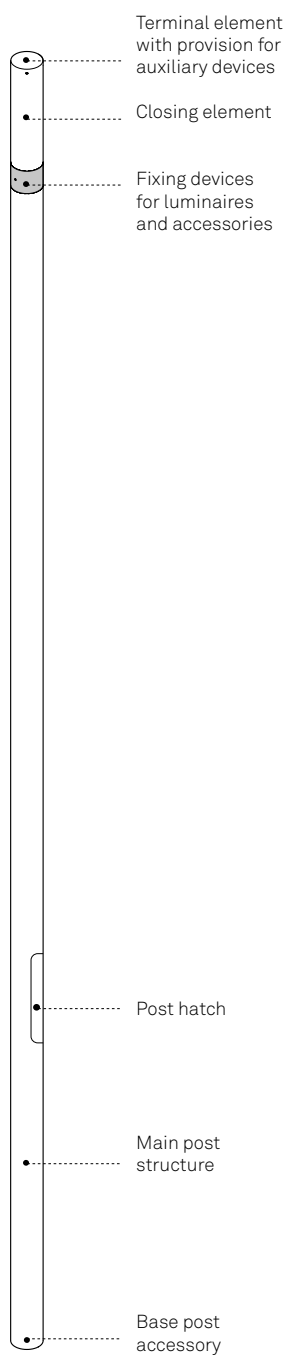
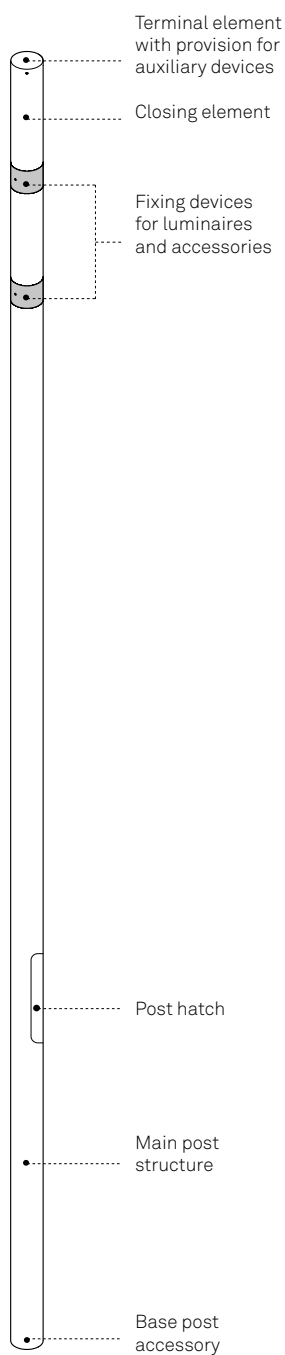


NEBULA POLE SYSTEM H 5 m

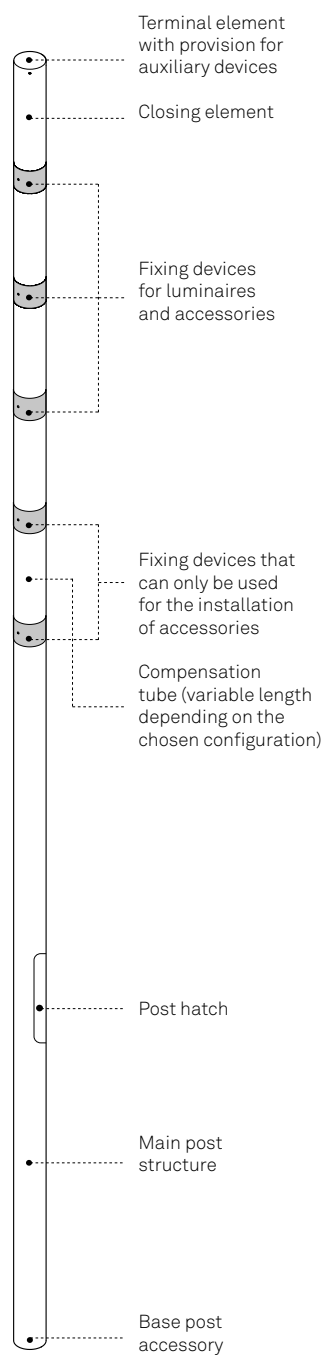
The Nebula system allows numerous configurations. The number of fixing devices for luminaires and accessories varies according to the main structure of the chosen post.



COD. ANEB.501.001



COD. ANEB.501.002

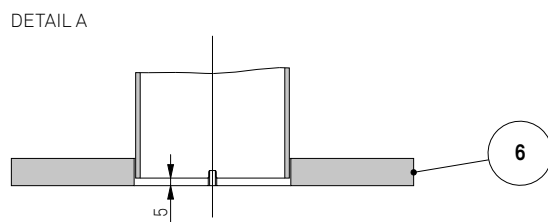
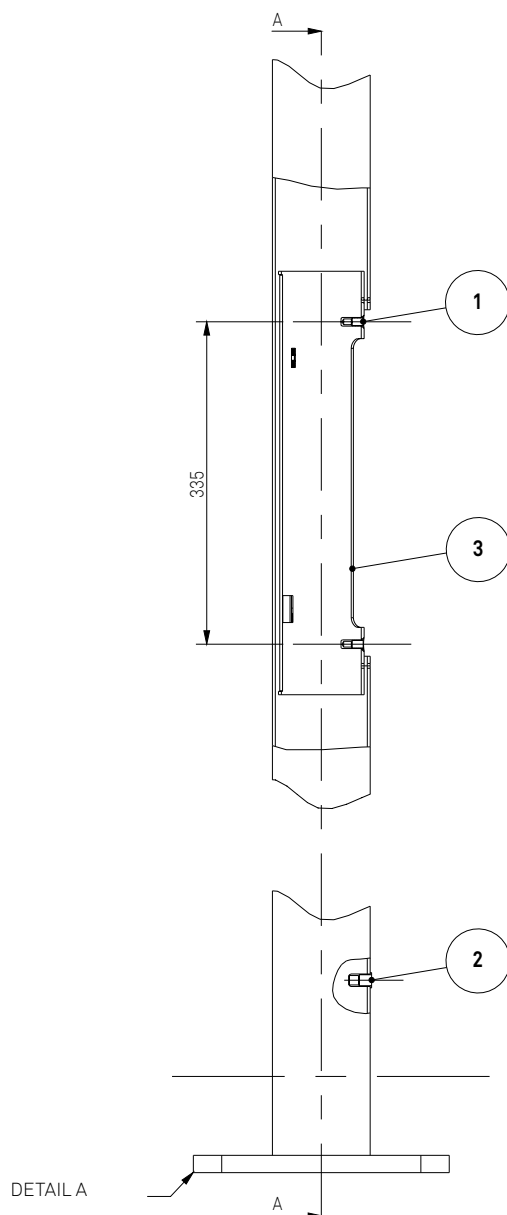
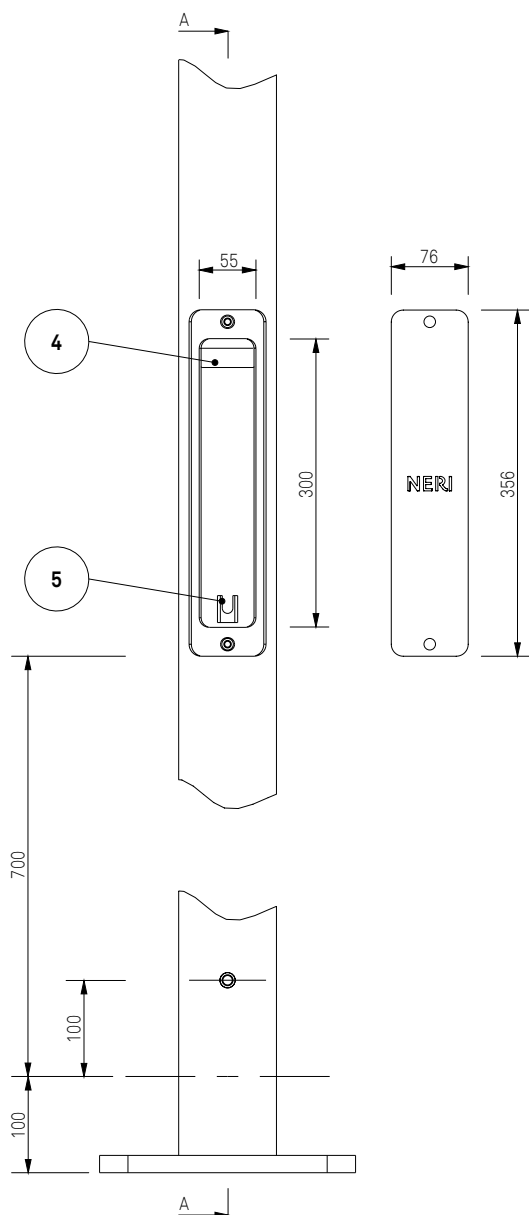


COD. ANEB.501.005

POST HATCH

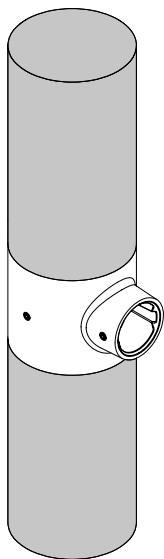
Legend

- 1 - M6 threaded insert for door closing
- 2 - M10 threaded insert for grounding
- 3 - Hatch Stop
- 4 - Terminal block fixing
- 5 - Post grounding fixing pocket
- 6 - Flange



FIXING DEVICES:

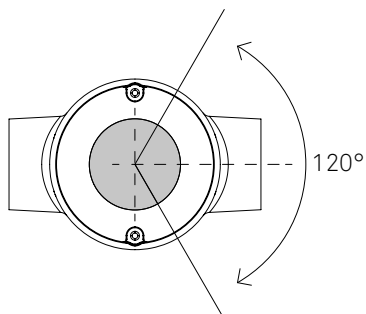
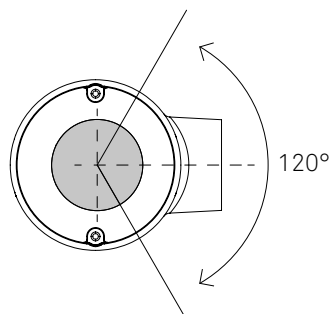
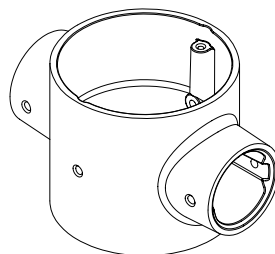
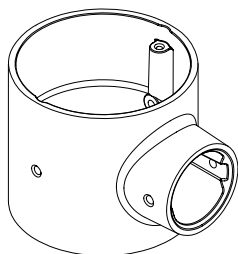
The fixing devices, in single or double version, allow the installation of accessories and luminaires to the type of post chosen.



The permissible rotation of the fixing device for the luminaires is 120°.

The accessories can be installed in 90° steps.

Using the double element the accessories / luminaires are placed at 180°.



COMPENSATION TUBE:

The compensation tubes are made of steel and hot-dip galvanized. The number and length of modular elements are determined by the final configuration of the chosen system.

Compensation pipe codes for post models_ ANEB.501.001, ANEB.501.002, ANEB.501.005

Cod. 9525_388_041
- H Tot. 450 mm

Cod. 9525_388_042
- H Tot. 900 mm

Cod. 9525_388_043
- H Tot. 1350 mm

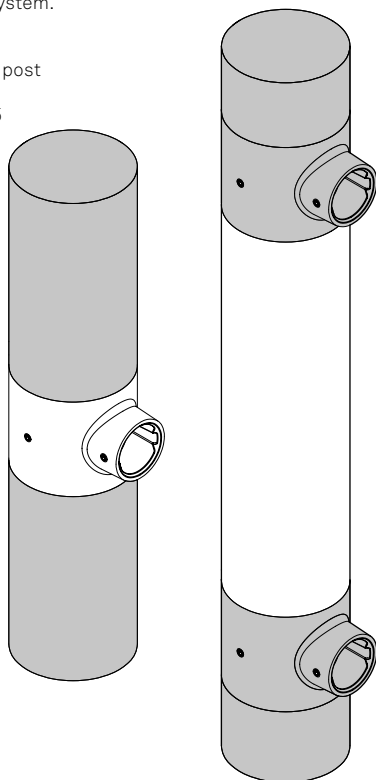
Cod. 9525_388_044
- H Tot. 1800 mm

Cod. 9525_388_047
- H Tot. 360 mm

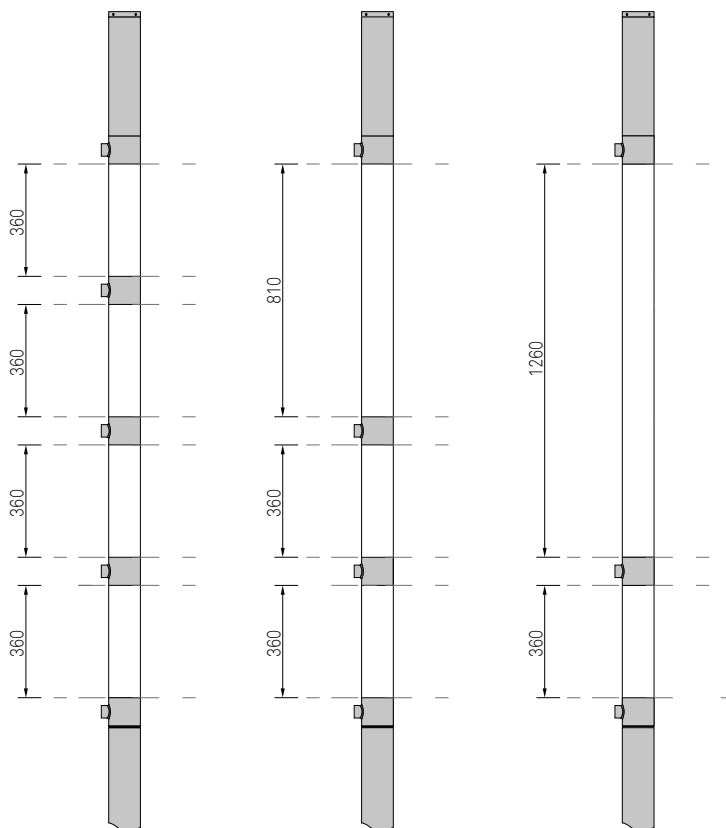
Cod. 9525_388_048
- H Tot. 810 mm

Cod. 9525_388_049
- H Tot. 1260 mm

Cod. 9525_388_050
- H Tot. 1710 mm



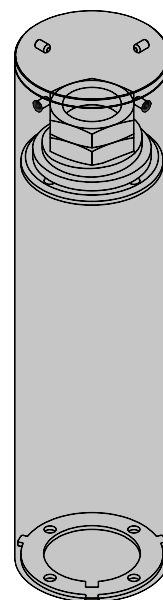
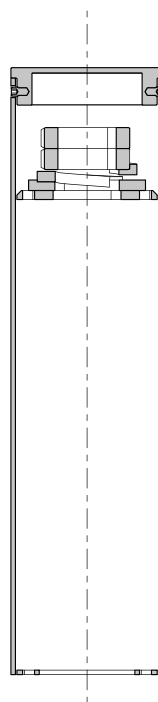
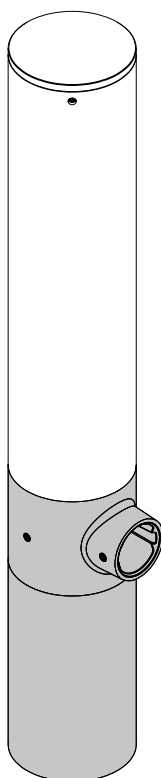
Example of compensation tubes with configuration cod. ANEB.501.005



LOCKING ELEMENT:

The closing tube enables the fixing of the components to the post core. The assembly is completed by a cover placed at the top end and fixed with four screws.

Cod. 9525_388_019
- H Tot. 398 mm

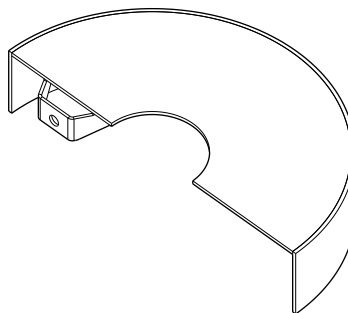
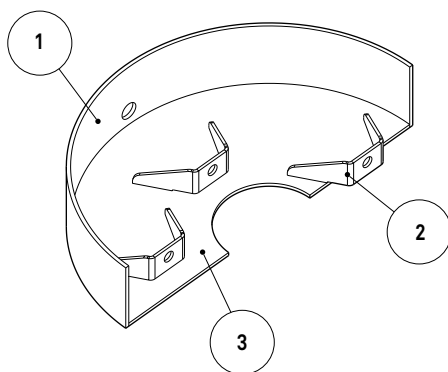
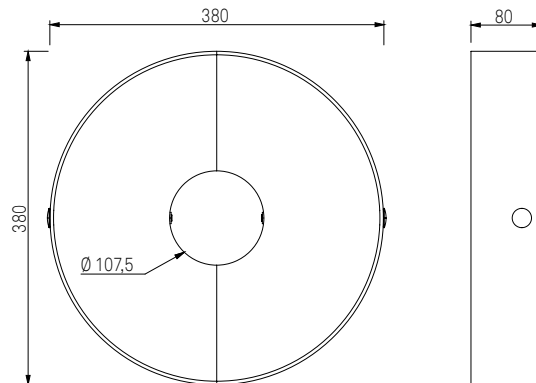
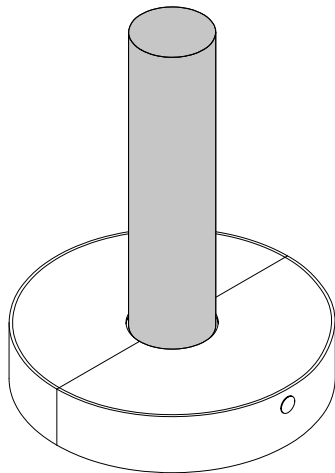


POST BASE ACCESSORY:

Steel flange cover and hot-dip galvanized, consisting of two separate elements. The separation of the component allows the use of the accessory also in phases after the installation of the post.

Legend

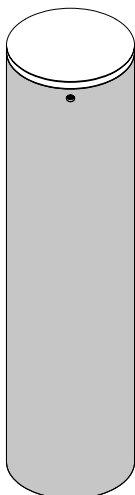
- 1 - Upper sheet metal
- 2 - Collar
- 3 - Lower sheet metal



TERMINAL ELEMENT:

Ready for auxiliary devices:

- Zhaga Connector (Book18)
- NEMA Connector (3 PIN, 7 PIN)



MAIN STRUCTURE POLES H 5m

Conformity

CE certified post, in compliance with UNI EN 40-5.

Materials

Steel tubes UNI EN 10219-1, hot galvanized as UNI EN ISO 1461 norm.

Structural elements

Pole in hot galvanized steel, composed by three tubes welded together:

- (A) Tube diam. 102 x 4505 mm.
- (B) Tube diam. 60 x 365 mm.
- (C) Tube diam. 42 x 100 mm.
- (D) Square flange.

Standard equipment

- Slot (E) (300 x 50 mm) for installation of terminal board, with or without fuse.
- Hand hole (F) (360 x 80 mm) to close the slot for terminal board with the Neri logo on it.
- Hole \varnothing 90 mm at the centre of flange for passage of electric cables.
- Terminal for grounding (bushing M10).

Dimensions and weight

- Height max: 5070 mm.
- Height useful: 4970 mm.
- Weight max: 48,5 kg.

Mounting

- Square Flange (D) 266 x 266 mm (thickness 18 mm), for mounting with 4 anchors bolts to the foundation plinth (anchors and bolts are not supplied).
- We recommend mounting with hidden flange, positioned 100 mm below the final pavement level.

Protection of surfaces

Please refer to the specific description of the product painting cycles.

Painting

Powder coating:

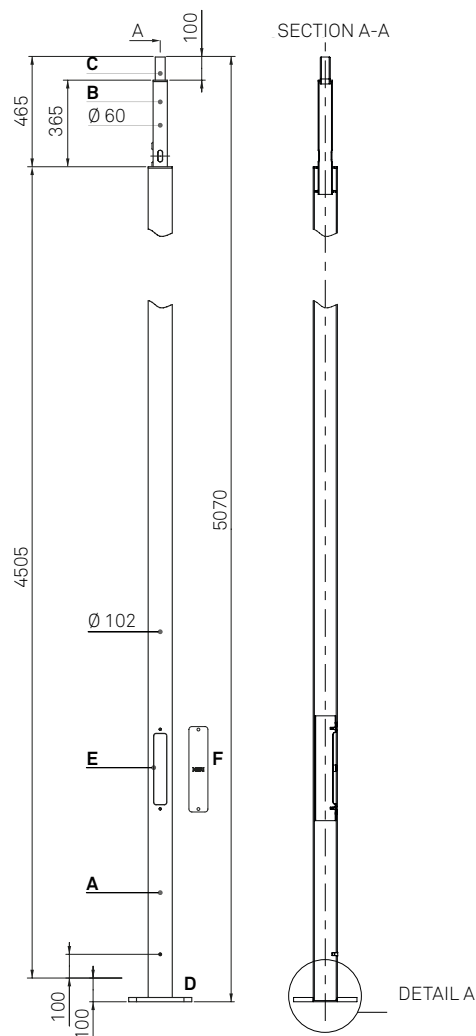
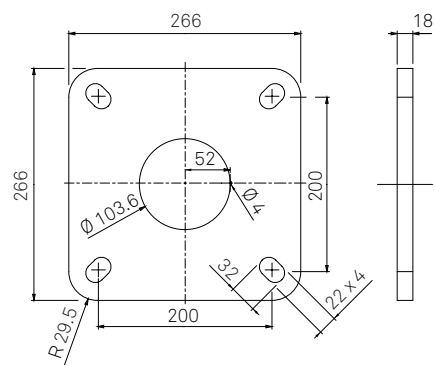
- neri grey
- pure white
- white aluminium
- grey aluminium
- jet black
- moss green

Accessories (on demand)

- Flange cover.
- IP54 kit for hand hole.

DRAWINGS

DETAIL A - FLANGE PLAN



MAIN STRUCTURE POLES H 5m

Conformity

CE certified post, in compliance with UNI EN 40-5.

Materials

Steel tubes UNI EN 10219-1, hot galvanized as UNI EN ISO 1461 norm.

Structural elements

Pole in hot galvanized steel, composed by three tubes welded together:

- (A) Tube diam. 102 x 4005 mm.
- (B) Tube diam. 60 x 815 mm.
- (C) Tube diam. 42 x 100 mm.
- (D) Square flange.

Standard equipment

- Slot (E) (300 x 50 mm) for installation of terminal board, with or without fuse.
- Hand hole (F) (360 x 80 mm) to close the slot for terminal board with the Neri logo on it.
- Hole \varnothing 90 mm at the centre of flange for passage of electric cables.
- Terminal for grounding (bushing M10).

Dimensions and weight

- Height max: 5070 mm.
- Height useful: 4970 mm.
- Weight max: 47,5 kg.

Mounting

- Square Flange (D) 266 x 266 mm (thickness 18 mm), for mounting with 4 anchors bolts to the foundation plinth (anchors and bolts are not supplied).
- We recommend mounting with hidden flange, positioned 100 mm below the final pavement level.

Protection of surfaces

Please refer to the specific description of the product painting cycles.

Painting

Powder coating:

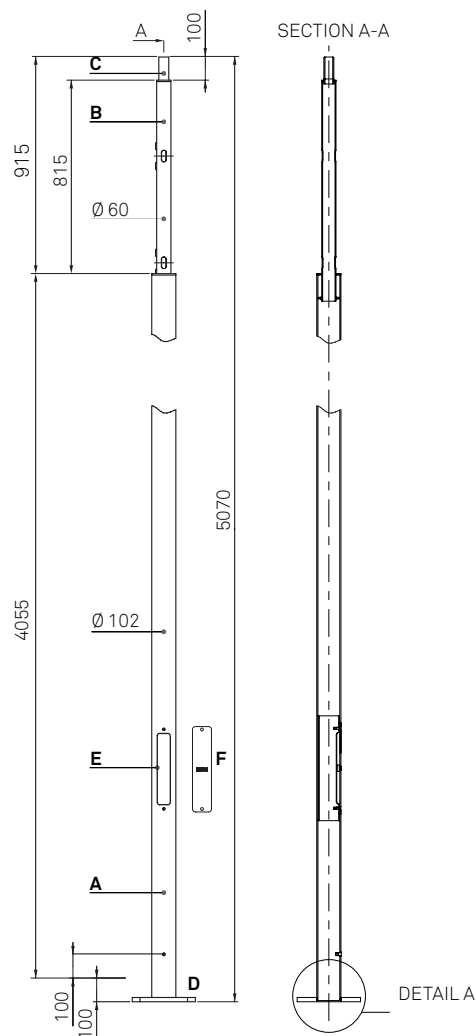
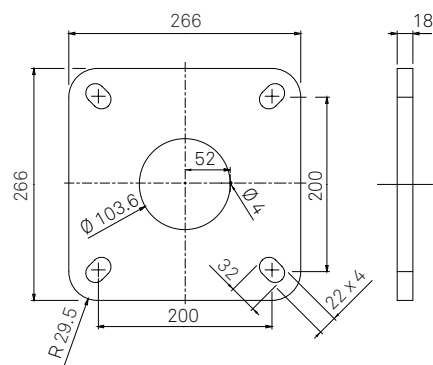
- neri grey
- pure white
- white aluminium
- grey aluminium
- jet black
- moss green

Accessories (on demand)

- Flange cover.
- IP54 kit for hand hole.

DRAWINGS

DETAIL A - FLANGE PLAN



MAIN STRUCTURE POLES H 5m

Conformity

CE certified post, in compliance with UNI EN 40-5.

Materials

Steel tubes UNI EN 10219-1, hot galvanized as UNI EN ISO 1461 norm.

Structural elements

Pole in hot galvanized steel, composed by three tubes welded together:

- (A) Tube diam. 102 x 2805 mm.
- (B) Tube diam. 60 x 2165 mm.
- (C) Tube diam. 42 x 100 mm.
- (D) Square flange.

Standard equipment

- Slot (E) (300 x 50 mm) for installation of terminal board, with or without fuse.
- Hand hole (F) (360 x 80 mm) to close the slot for terminal board with the Neri logo on it.
- Hole $\varnothing 90$ mm at the centre of flange for passage of electric cables.
- Terminal for grounding (bushing M10).

Dimensions and weight

- Height max: 5070 mm.
- Height useful: 4970 mm.
- Weight max: 59 kg.

Mounting

- Square Flange (D) 266 x 266 mm (thickness 18 mm), for mounting with 4 anchors bolts to the foundation plinth (anchors and bolts are not supplied).
- We recommend mounting with hidden flange, positioned 100 mm below the final pavement level.

Protection of surfaces

Please refer to the specific description of the product painting cycles.

Painting

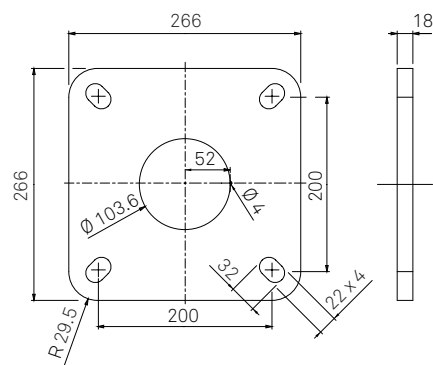
Powder coating:

- neri grey
- pure white
- white aluminium
- grey aluminium
- jet black
- moss green

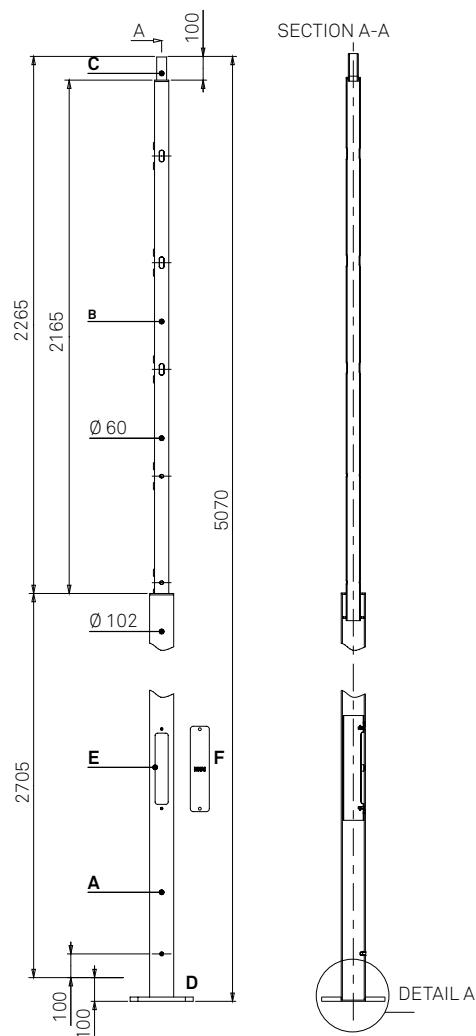
Accessories (on demand)

- Flange cover.
- IP54 kit for hand hole.

DETAIL A - FLANGE PLAN

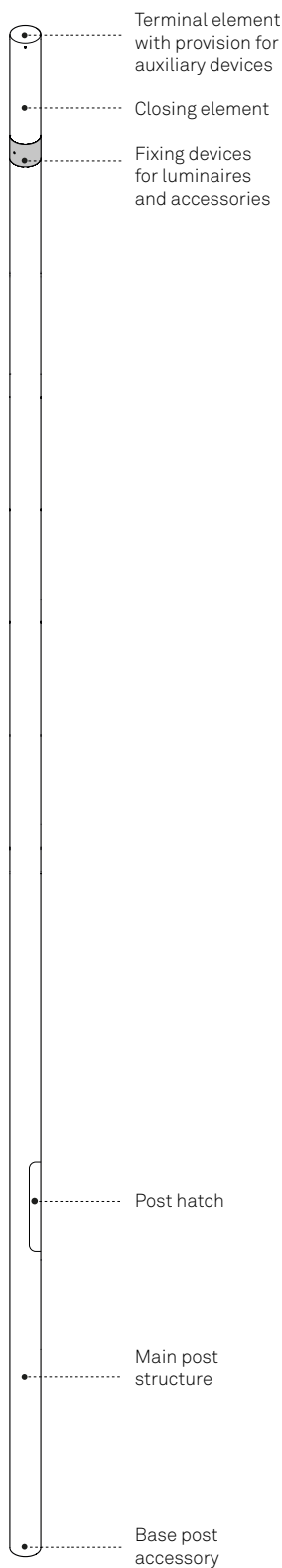


DRAWINGS

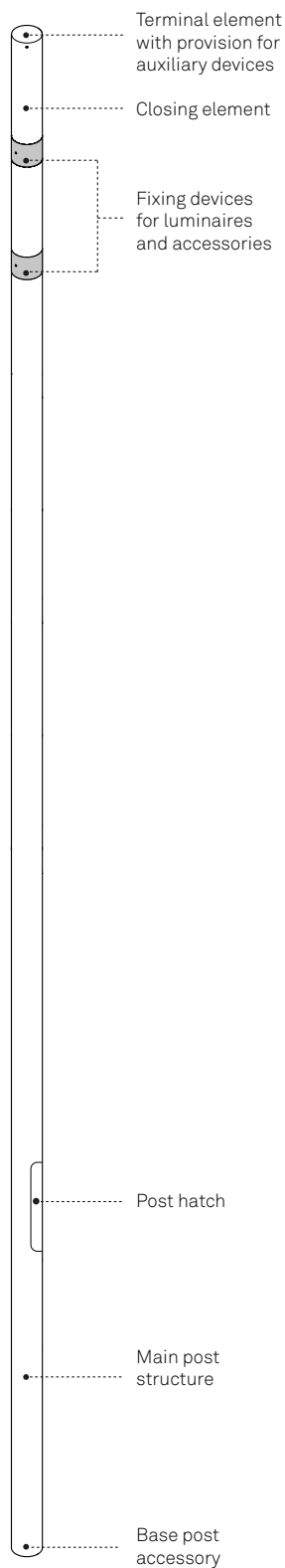


NEBULA POLE SYSTEM H 5,9 m

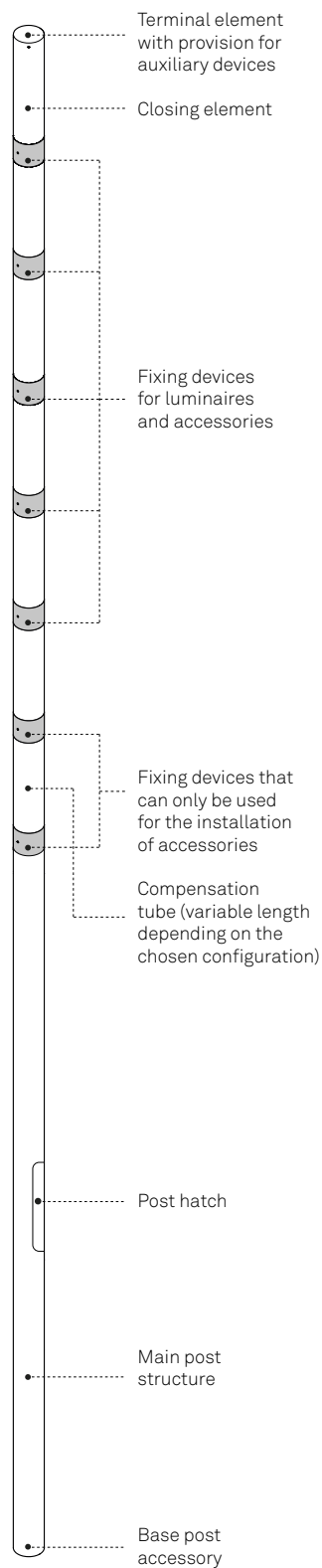
The Nebula system allows numerous configurations. The number of fixing devices for luminaires and accessories varies according to the main structure of the chosen post.



COD. ANEB.601.001



COD. ANEB.601.002

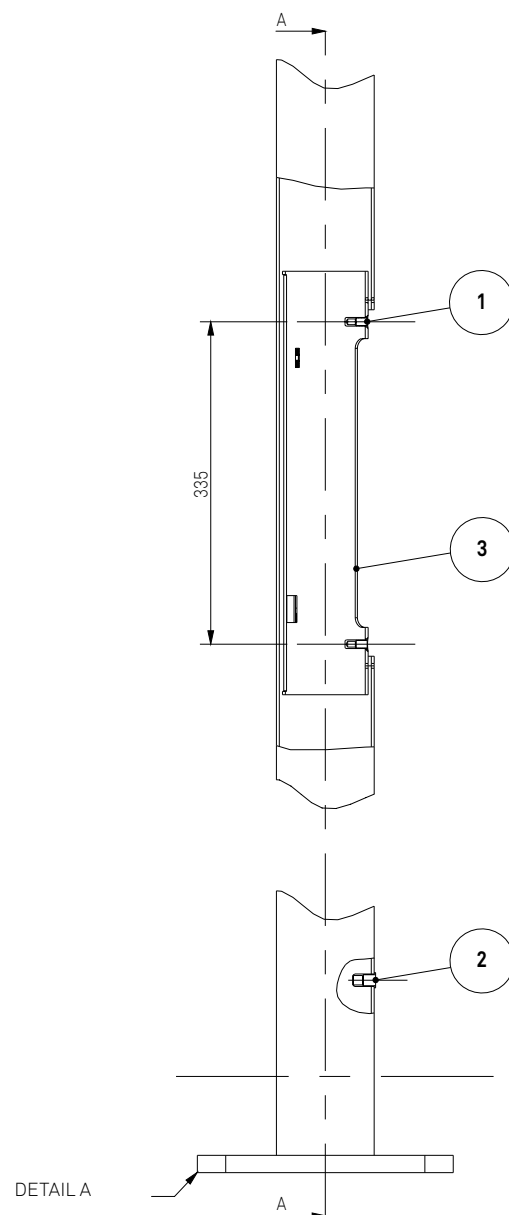
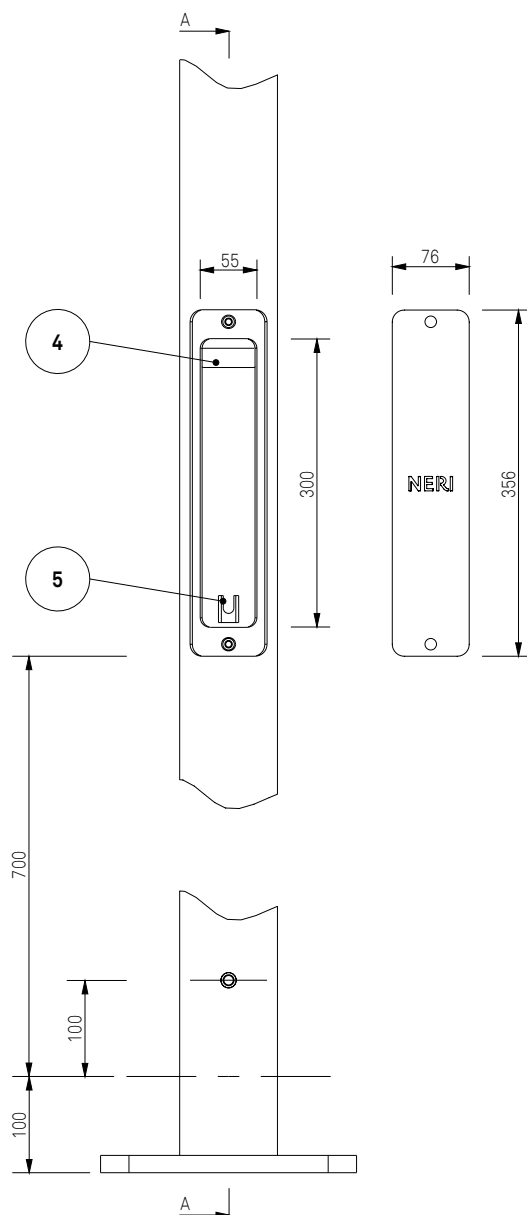


COD. ANEB.601.007

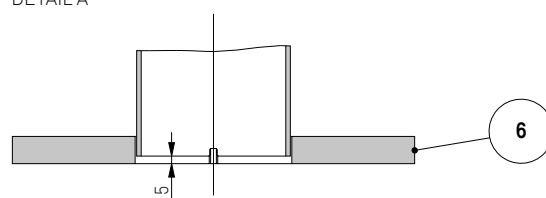
POST HATCH

Legend

- 1 - M6 threaded insert for door closing
- 2 - M10 threaded insert for grounding
- 3 - Hatch Stop
- 4 - Terminal block fixing
- 5 - Post grounding fixing pocket
- 6 - Flange

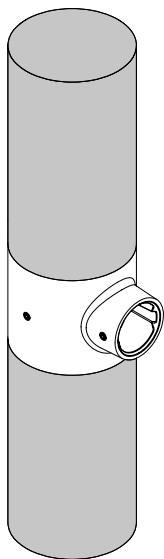


DETAIL A



FIXING DEVICES:

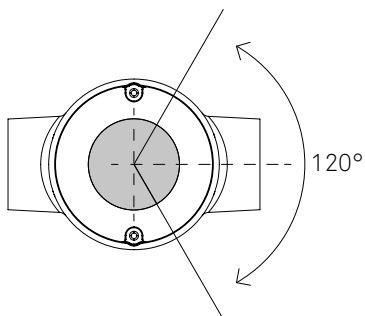
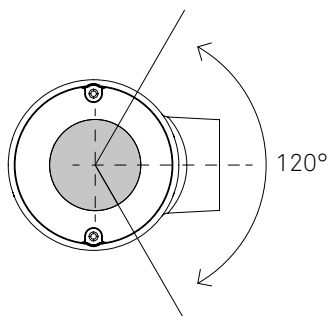
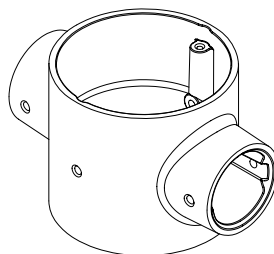
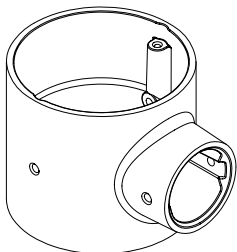
The fixing devices, in single or double version, allow the installation of accessories and luminaires to the type of post chosen.



The permissible rotation of the fixing device for the luminaires is 120°.

The accessories can be installed in 90° steps.

Using the double element the accessories / luminaires are placed at 180°.



COMPENSATION TUBE:

The compensation tubes are made of steel and hot-dip galvanized. The number and length of modular elements are determined by the final configuration of the chosen system.

Compensation pipe codes for post models_ ANEB.601.001, ANEB.601.002, ANEB.601.007

Cod. 9525_388_041
- H Tot. 450 mm

Cod. 9525_388_042
- H Tot. 900 mm

Cod. 9525_388_043
- H Tot. 1350 mm

Cod. 9525_388_044
- H Tot. 1800 mm

Cod. 9525_388_045
- H Tot. 2250 mm

Cod. 9525_388_046
- H Tot. 2700 mm

Cod. 9525_388_047
- H Tot. 360 mm

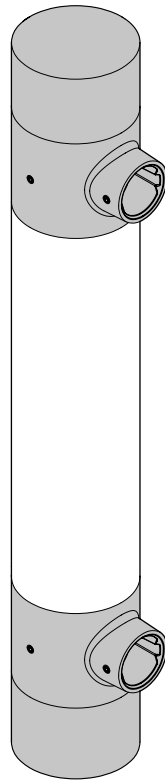
Cod. 9525_388_048
- H Tot. 810 mm

Cod. 9525_388_049
- H Tot. 1260 mm

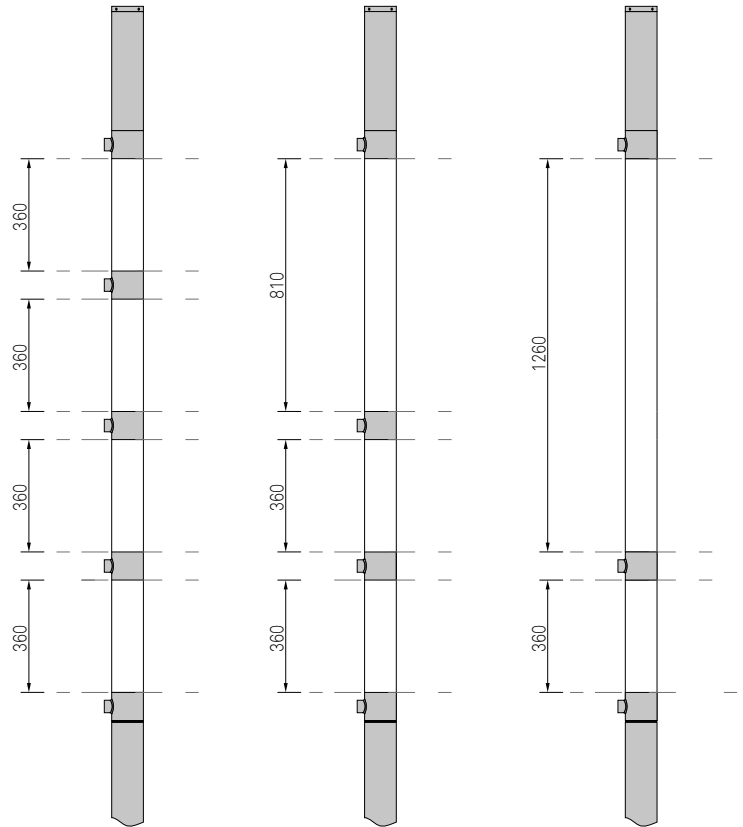
Cod. 9525_388_050
- H Tot. 1710 mm

Cod. 9525_388_017
- H Tot. 2160 mm

Cod. 9525_388_018
- H Tot. 2610 mm



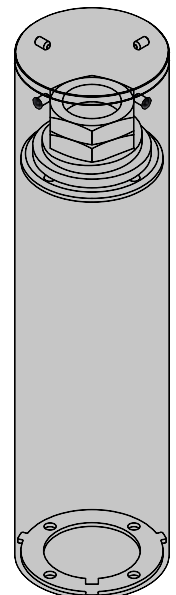
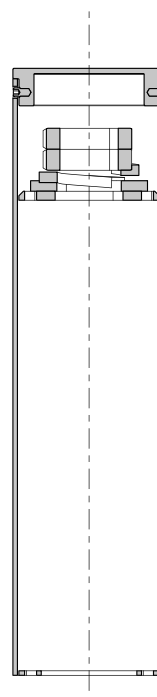
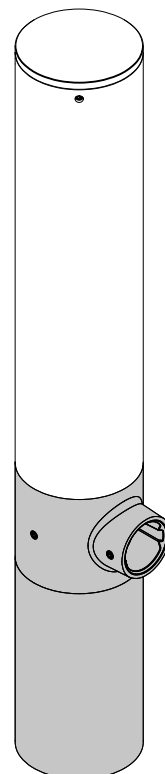
Example of compensation tubes with configuration cod. ANEB.501.005



LOCKING ELEMENT:

The closing tube enables the fixing of the components to the post core. The assembly is completed by a cover placed at the top end and fixed with four screws.

Cod. 9525_388_019
- H Tot. 398 mm

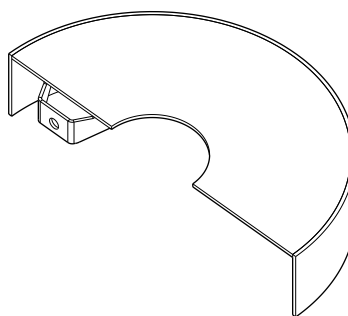
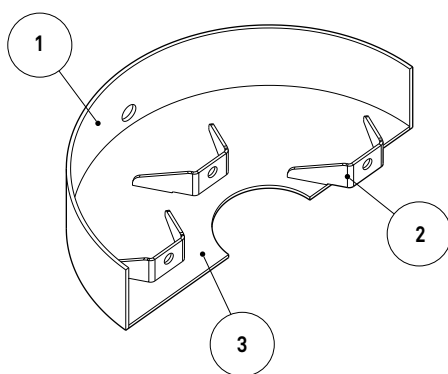
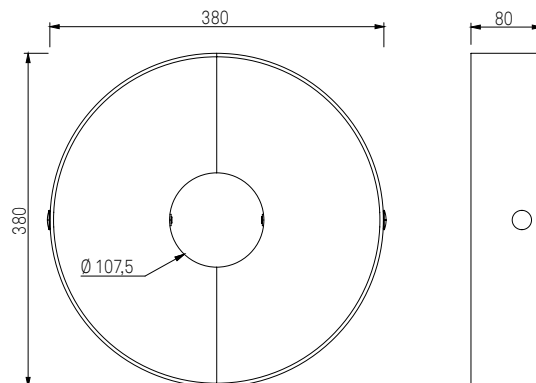
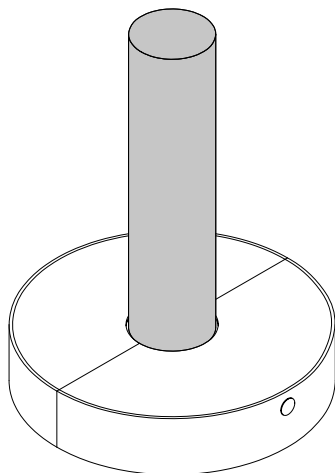


POST BASE ACCESSORY:

Steel flange cover and hot-dip galvanized, consisting of two separate elements. The separation of the component allows the use of the accessory also in phases after the installation of the post.

Legend

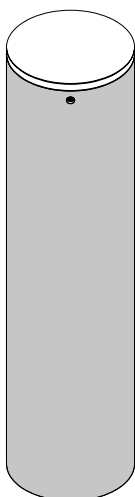
- 1 - Upper sheet metal
- 2 - Collar
- 3 - Lower sheet metal



TERMINAL ELEMENT:

Ready for auxiliary devices:

- Zhaga Connector (Book18)
- NEMA Connector (3 PIN, 7 PIN)



MAIN STRUCTURE POLES H 5,9 m

Conformity

CE certified post, in compliance with UNI EN 40-5.
Basic Wind Speed: 72 m/sec.

Materials

Steel tubes UNI EN 10219-1, hot galvanized as UNI EN ISO 1461 norm.

Structural elements

Pole in hot galvanized steel, composed by three tubes welded together:

- (A) Tube diam. 102 x 5505 mm.
- (B) Tube diam. 60 x 365 mm.
- (C) Tube diam. 42 x 100 mm.
- (D) Square flange.

Standard equipment

- Slot (E) (300 x 50 mm) for installation of terminal board, with or without fuse.
- Hand hole (F) (360 x 80 mm) to close the slot for terminal board with the Neri logo on it.
- Hole \varnothing 90 mm at the centre of flange for passage of electric cables.
- Terminal for grounding (bushing M10).

Dimensions and weight

- Height max: 5970 mm.
- Height useful: 5870 mm.
- Weight max: 82 kg.

Mounting

- Square Flange (D) 266 x 266 mm (thickness 18 mm), for mounting with 4 anchors bolts to the foundation plinth (anchors and bolts are not supplied).
- We recommend mounting with hidden flange, positioned 100 mm below the final pavement level.

Protection of surfaces

Please refer to the specific description of the product painting cycles.

Painting

Powder coating:

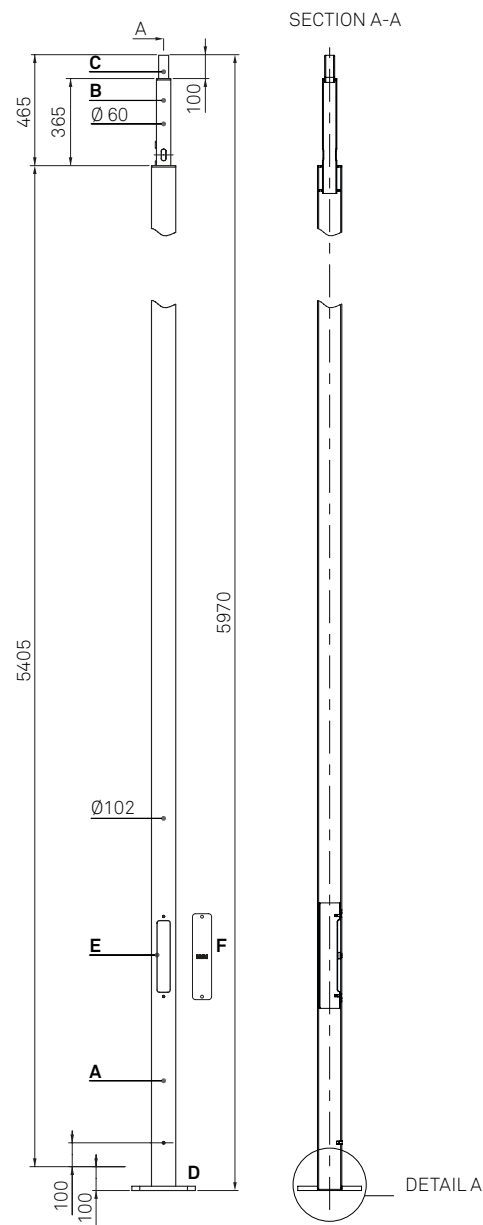
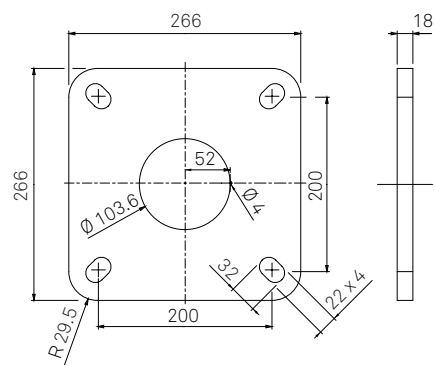
- neri grey
- pure white
- white aluminium
- grey aluminium
- jet black
- moss green

Accessories (on demand)

- Flange cover.
- IP54 kit for hand hole.

DRAWINGS

DETAIL A - FLANGE PLAN



MAIN STRUCTURE POLES H 5,9 m

Conformity

CE certified post, in compliance with UNI EN 40-5.
Basic Wind Speed: 72 m/sec.

Materials

Steel tubes UNI EN 10219-1, hot galvanized as UNI EN ISO 1461 norm.

Structural elements

Pole in hot galvanized steel, composed by three tubes welded together:

- (A) Tube diam. 102 x 5055 mm.
- (B) Tube diam. 60 x 815 mm.
- (C) Tube diam. 42 x 100 mm.
- (D) Square flange.

Standard equipment

- Slot (E) (300 x 50 mm) for installation of terminal board, with or without fuse.
- Hand hole (F) (360 x 80 mm) to close the slot for terminal board with the Neri logo on it.
- Hole \varnothing 90 mm at the centre of flange for passage of electric cables.
- Terminal for grounding (bushing M10).

Dimensions and weight

- Height max: 5970 mm.
- Height useful: 5870 mm.
- Weight max: 78 kg.

Mounting

- Square Flange (D) 266 x 266 mm (thickness 18 mm), for mounting with 4 anchors bolts to the foundation plinth (anchors and bolts are not supplied).
- We recommend mounting with hidden flange, positioned 100 mm below the final pavement level.

Protection of surfaces

Please refer to the specific description of the product painting cycles.

Painting

Powder coating:

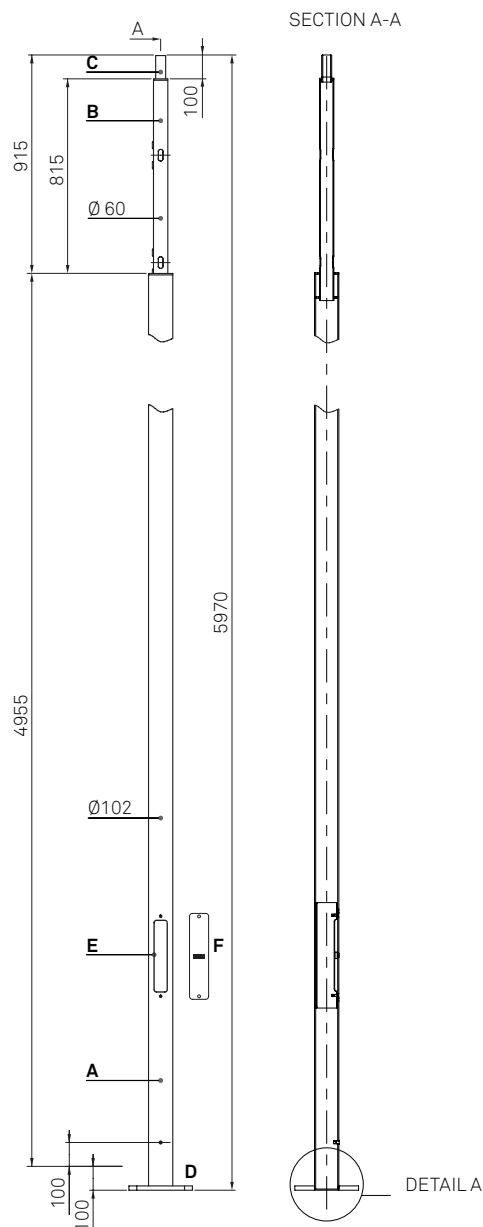
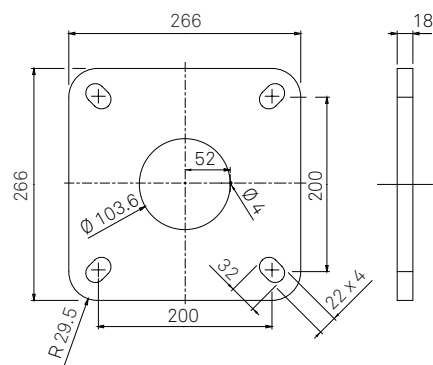
- neri grey
- pure white
- white aluminium
- grey aluminium
- jet black
- moss green

Accessories (on demand)

- Flange cover.
- IP54 kit for hand hole.

DRAWINGS

DETAIL A - FLANGE PLAN



MAIN STRUCTURE POLES H 5,9 m

Conformity

CE certified post, in compliance with UNI EN 40-5.
Basic Wind Speed: 72 m/sec.

Materials

Steel tubes UNI EN 10219-1, hot galvanized as UNI EN ISO 1461 norm.

Structural elements

Pole in hot galvanized steel, composed by three tubes welded together:

- (A) Tube diam. 102 x 2805 mm.
- (B) Tube diam. 60 x 3065 mm.
- (C) Tube diam. 42 x 100 mm.
- (D) Square flange.

Standard equipment

- Slot (E) (300 x 50 mm) for installation of terminal board, with or without fuse.
- Hand hole (F) (360 x 80 mm) to close the slot for terminal board with the Neri logo on it.
- Hole Ø 90 mm at the centre of flange for passage of electric cables.
- Terminal for grounding (bushing M10).

Dimensions and weight

- Height max: 5970 mm.
- Height useful: 5870 mm.
- Weight max: 64 kg.

Mounting

- Square Flange (D) 266 x 266 mm (thickness 18 mm), for mounting with 4 anchors bolts to the foundation plinth (anchors and bolts are not supplied).
- We recommend mounting with hidden flange, positioned 100 mm below the final pavement level.

Protection of surfaces

Please refer to the specific description of the product painting cycles.

Painting

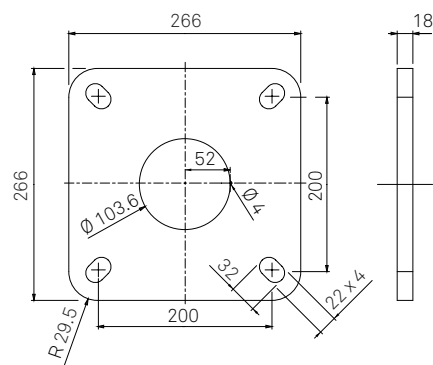
Powder coating:

- neri grey
- pure white
- white aluminium
- grey aluminium
- jet black
- moss green

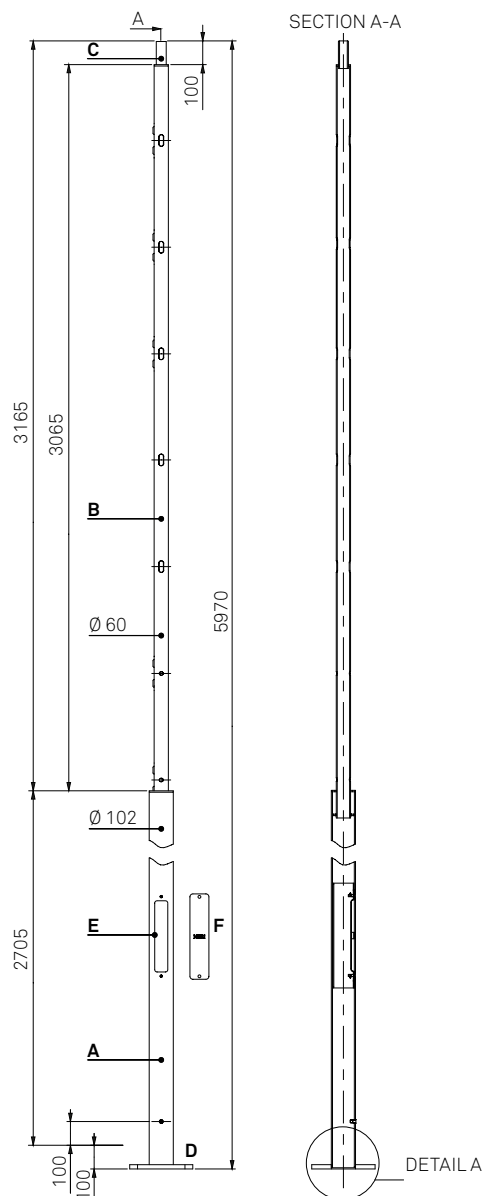
Accessories (on demand)

- Flange cover.
- IP54 kit for hand hole.

DETAIL A - FLANGE PLAN

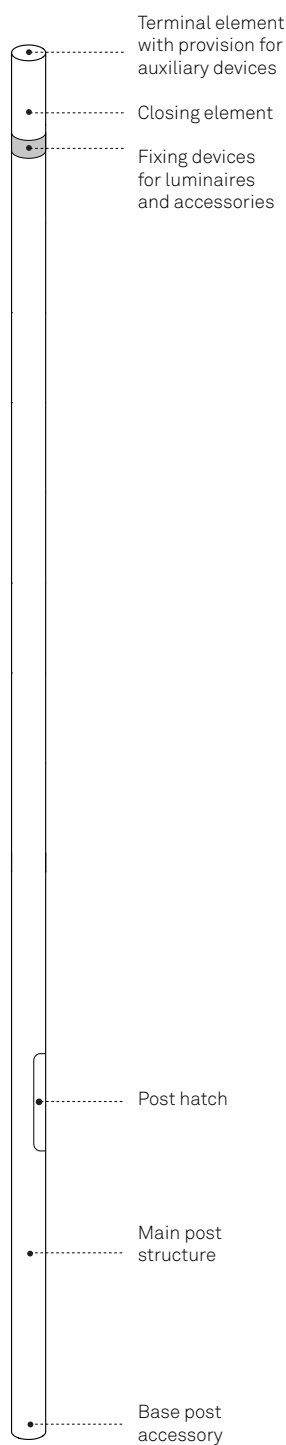


DRAWINGS

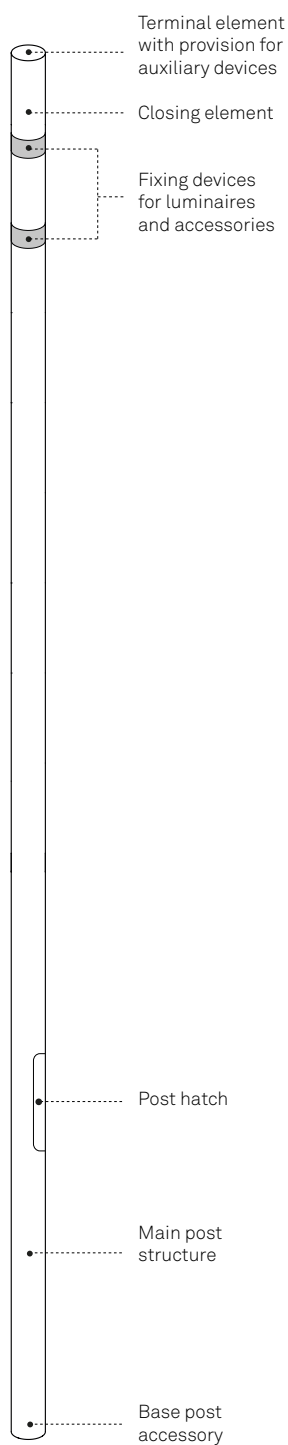


NEBULA POLE SYSTEM H 6,8 m

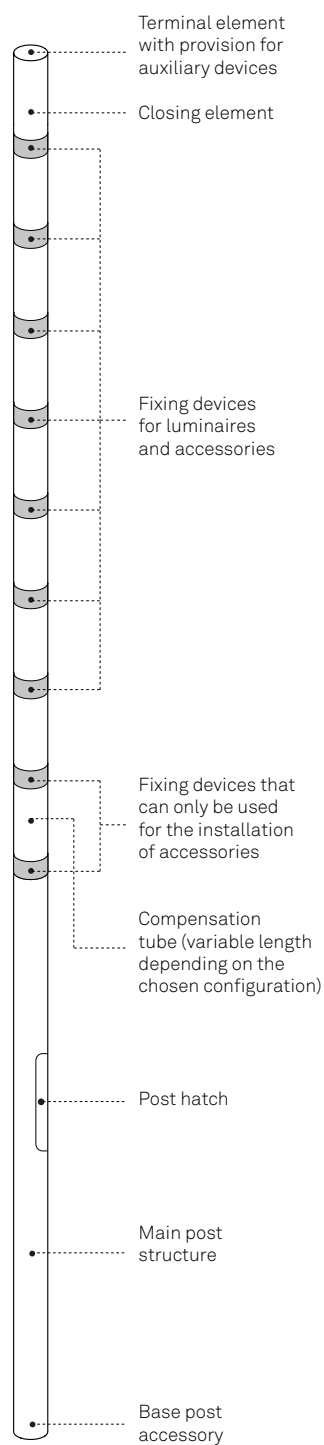
The Nebula system allows numerous configurations. The number of fixing devices for luminaires and accessories varies according to the main structure of the chosen post.



COD. ANEB.701.001



COD. ANEB.701.002

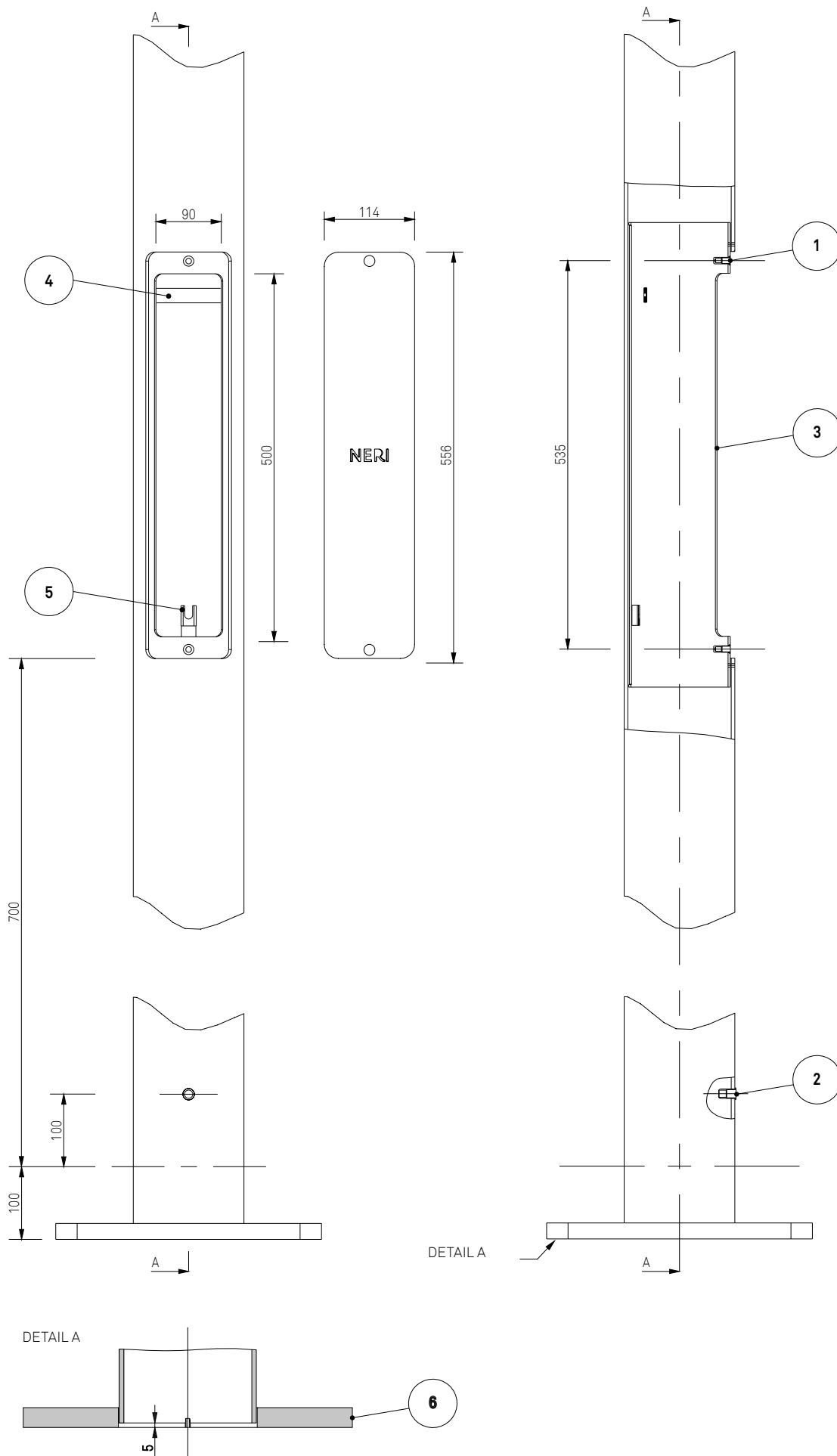


COD. ANEB.701.009

POST HATCH

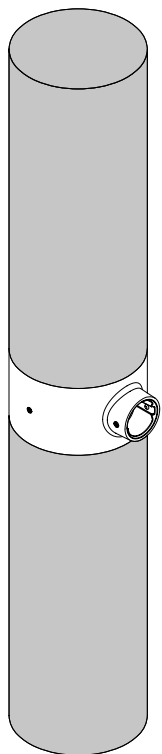
Legend

- 1 - M6 threaded insert for door closing
- 2 - M10 threaded insert for grounding
- 3 - Hatch Stop
- 4 - Terminal block fixing
- 5 - Post grounding fixing pocket
- 6 - Flange



FIXING DEVICES:

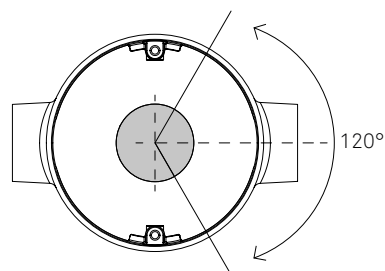
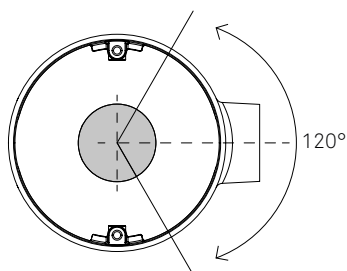
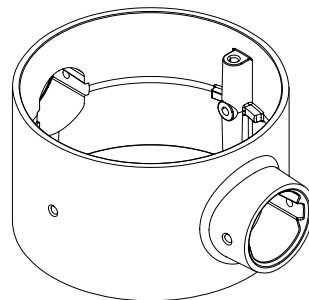
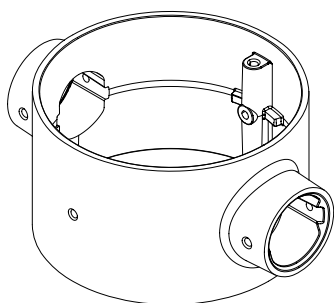
The fixing devices, in single or double version, allow the installation of accessories and luminaires to the type of post chosen.



The permissible rotation of the fixing device for the luminaires is 120°.

The accessories can be installed in 90° steps.

Using the double element the accessories / luminaires are placed at 180°.



COMPENSATION TUBE:

The compensation tubes are made of steel and hot-dip galvanized. The number and length of modular elements are determined by the final configuration of the chosen system.

Compensation pipe codes for post models_ ANEB.701.001, ANEB.701.002, ANEB.701.009

Cod. 9525_388_020
- H Tot. 450 mm

Cod. 9525_388_021
- H Tot. 900 mm

Cod. 9525_388_022
- H Tot. 1350 mm

Cod. 9525_388_023
- H Tot. 1800 mm

Cod. 9525_388_024
- H Tot. 2250 mm

Cod. 9525_388_025
- H Tot. 2700 mm

Cod. 9525_388_026
- H Tot. 3150 mm

Cod. 9525_388_027
- H Tot. 3600 mm

Cod. 9525_388_030
- H Tot. 360 mm

Cod. 9525_388_031
- H Tot. 810 mm

Cod. 9525_388_032
- H Tot. 1260 mm

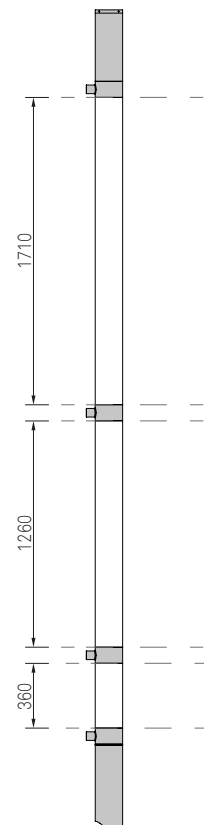
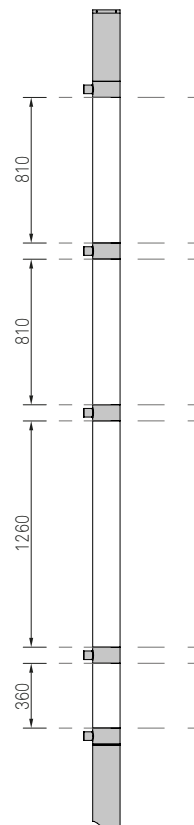
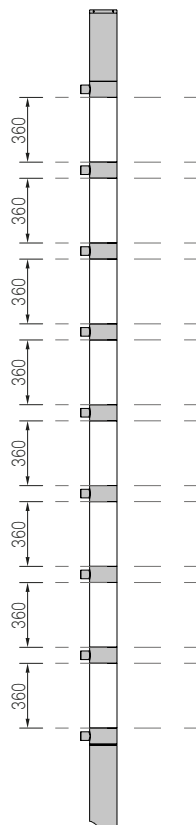
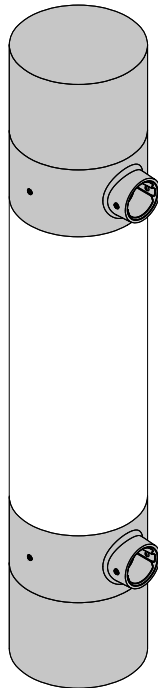
Cod. 9525_388_033
- H Tot. 1710 mm

Cod. 9525_388_034
- H Tot. 2160 mm

Cod. 9525_388_035
- H Tot. 2610 mm

Cod. 9525_388_036
- H Tot. 3060 mm

Cod. 9525_388_037
- H Tot. 3510 mm

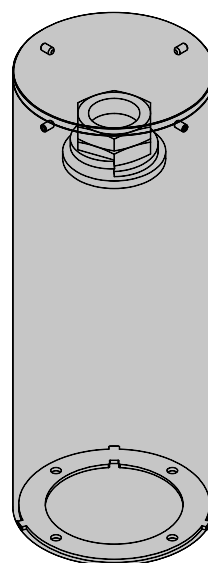
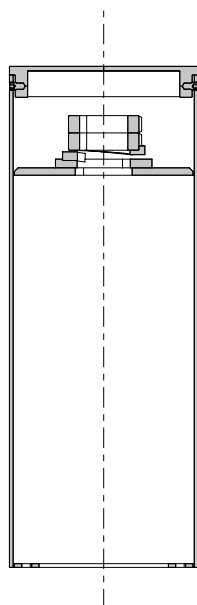
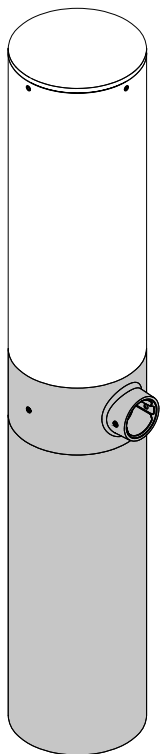


Example of compensation tubes with configuration cod. ANEB.701.009

LOCKING ELEMENT:

The closing tube enables the fixing of the components to the post core. The assembly is completed by a cover placed at the top end and fixed with four screws.

Cod. 9525_388_040
- H Tot. 398 mm

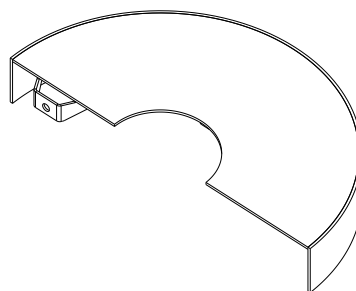
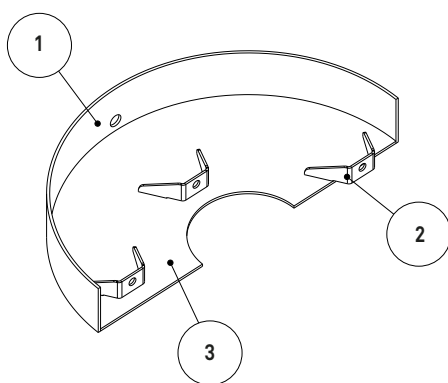
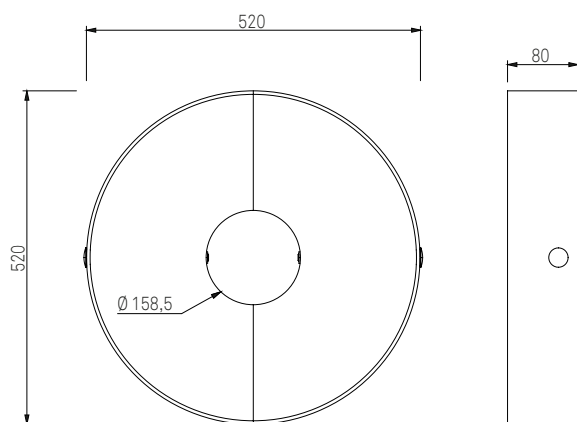
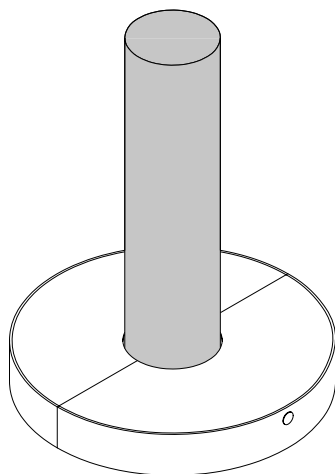


POST BASE ACCESSORY:

Steel flange cover and hot-dip galvanized, consisting of two separate elements. The separation of the component allows the use of the accessory also in phases after the installation of the post.

Legend

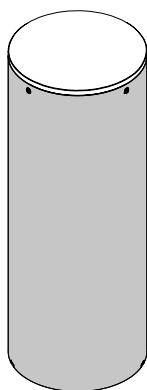
- 1 - Upper sheet metal
- 2 - Collar
- 3 - Lower sheet metal



TERMINAL ELEMENT:

Ready for auxiliary devices:

- Zhaga Connector (Book18)
- NEMA Connector (3 PIN, 7 PIN)



MAIN STRUCTURE POLES H 6,8 m

Conformity

CE certified post, in compliance with UNI EN 40-5.
Basic Wind Speed: 72 m/sec.

Materials

Steel tubes UNI EN 10219-1, hot galvanized as UNI EN ISO 1461 norm.

Structural elements

Pole in hot galvanized steel, composed by three tubes welded together:

- (A) Tube diam. 152 x 6305 mm.
- (B) Tube diam. 102 x 365 mm.
- (C) Tube diam. 42 x 100 mm.
- (D) Square flange.

Standard equipment

- Slot (E) (500 x 90 mm) for installation of terminal board, with or without fuse.
- Hand hole (F) (560 x 120 mm) to close the slot for terminal board with the Neri logo on it.
- Hole \varnothing 140 mm at the centre of flange for passage of electric cables.
- Terminal for grounding (bushing M10).

Dimensions and weight

- Height max: 6870 mm.
- Height useful: 6770 mm.
- Weight max: 152,5 kg.

Mounting

- Square Flange (D) 366 x 366 mm (thickness 22 mm), for mounting with 4 anchors bolts to the foundation plinth (anchors and bolts are not supplied).
- We recommend mounting with hidden flange, positioned 100 mm below the final pavement level.

Protection of surfaces

Please refer to the specific description of the product painting cycles.

Painting

Powder coating:

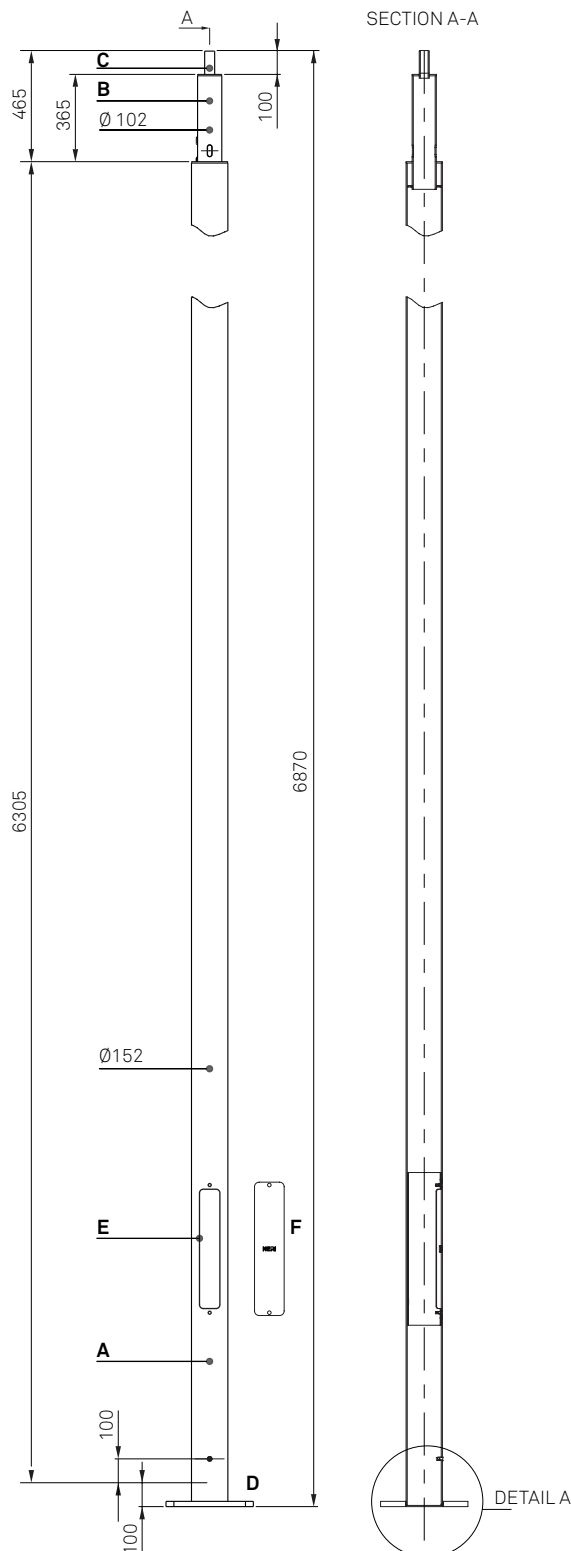
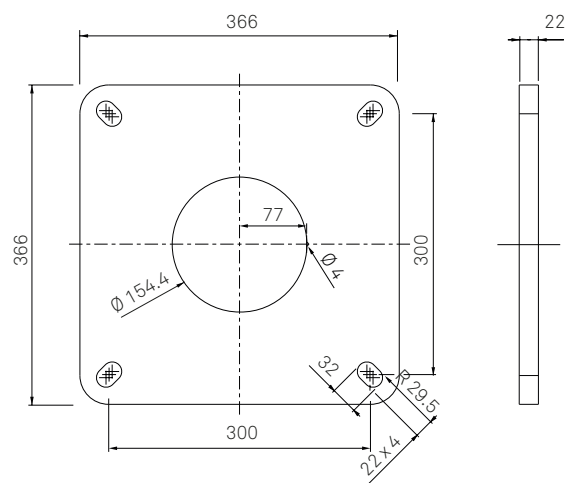
- neri grey
- pure white
- white aluminium
- grey aluminium
- jet black
- moss green

Accessories (on demand)

- Flange cover.
- IP54 kit for hand hole.

DRAWINGS

DETAIL A - FLANGE PLAN



MAIN STRUCTURE POLES H 6,8 m

Conformity

CE certified post, in compliance with UNI EN 40-5.
Basic Wind Speed: 72 m/sec.

Materials

Steel tubes UNI EN 10219-1, hot galvanized as UNI EN ISO 1461 norm.

Structural elements

Pole in hot galvanized steel, composed by three tubes welded together:

- (A) Tube diam. 152 x 5855 mm.
- (B) Tube diam. 102 x 815 mm.
- (C) Tube diam. 42 x 100 mm.
- (D) Square flange.

Standard equipment

- Slot (E) (500 x 90 mm) for installation of terminal board, with or without fuse.
- Hand hole (F) (560 x 120 mm) to close the slot for terminal board with the Neri logo on it.
- Hole \varnothing 140 mm at the centre of flange for passage of electric cables.
- Terminal for grounding (bushing M10).

Dimensions and weight

- Height max: 6870 mm.
- Height useful: 6770 mm.
- Weight max: 149 kg.

Mounting

- Square Flange (D) 366 x 366 mm (thickness 22 mm), for mounting with 4 anchors bolts to the foundation plinth (anchors and bolts are not supplied).
- We recommend mounting with hidden flange, positioned 100 mm below the final pavement level.

Protection of surfaces

Please refer to the specific description of the product painting cycles.

Painting

Powder coating:

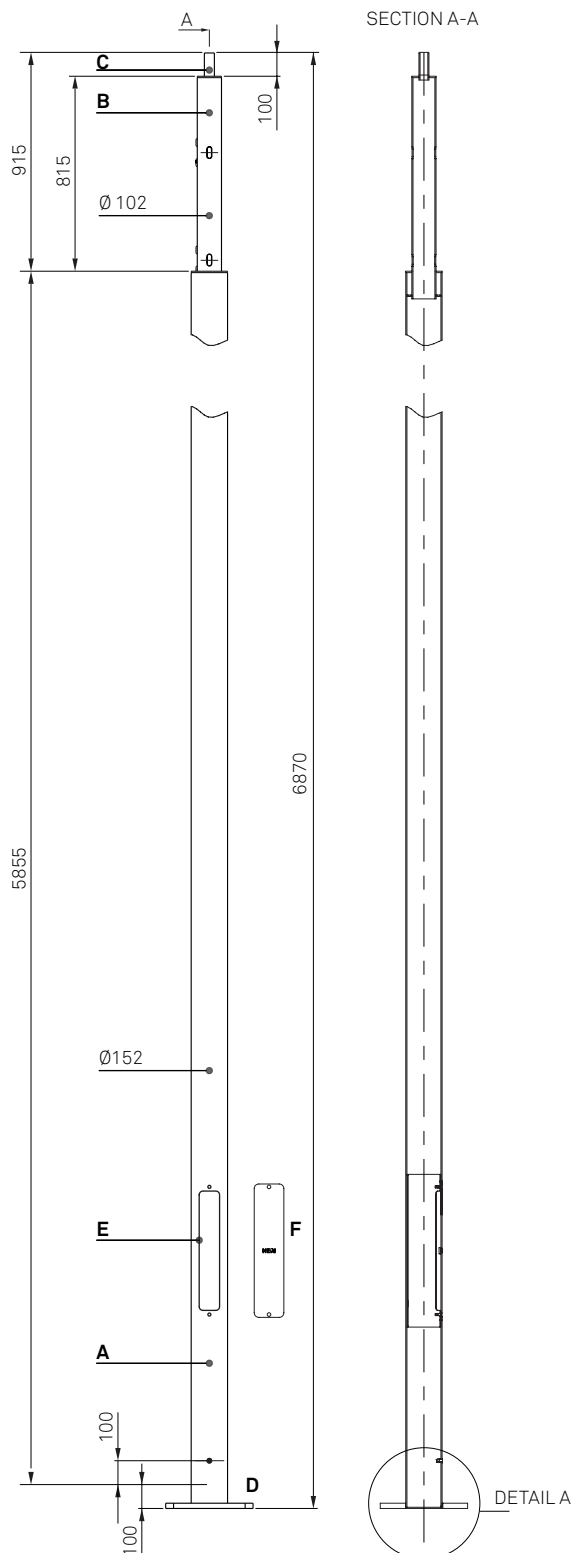
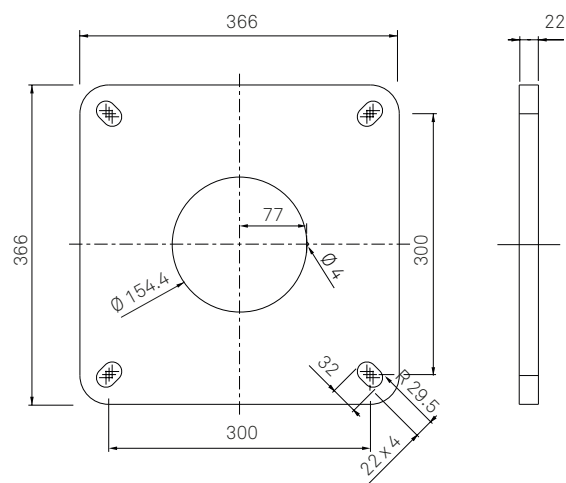
- neri grey
- pure white
- white aluminium
- grey aluminium
- jet black
- moss green

Accessories (on demand)

- Flange cover.
- IP54 kit for hand hole.

DRAWINGS

DETAIL A - FLANGE PLAN



MAIN STRUCTURE POLES H 6,8 m

Conformity

CE certified post, in compliance with UNI EN 40-5.
Basic Wind Speed: 72 m/sec.

Materials

Steel tubes UNI EN 10219-1, hot galvanized as UNI EN ISO 1461 norm.

Structural elements

Pole in hot galvanized steel, composed by three tubes welded together:

- (A) Tube diam. 152 x 2805 mm.
- (B) Tube diam. 102 x 3965 mm.
- (C) Tube diam. 42 x 100 mm.
- (D) Square flange.

Standard equipment

- Slot (E) (500 x 90 mm) for installation of terminal board, with or without fuse.
- Hand hole (F) (560 x 120 mm) to close the slot for terminal board with the Neri logo on it.
- Hole \varnothing 140 mm at the centre of flange for passage of electric cables.
- Terminal for grounding (bushing M10).

Dimensions and weight

- Height max: 6870 mm.
- Height useful: 6770 mm.
- Weight max: 128 kg.

Mounting

- Square Flange (D) 366 x 366 mm (thickness 22 mm), for mounting with 4 anchors bolts to the foundation plinth (anchors and bolts are not supplied).
- We recommend mounting with hidden flange, positioned 100 mm below the final pavement level.

Protection of surfaces

Please refer to the specific description of the product painting cycles.

Painting

Powder coating:

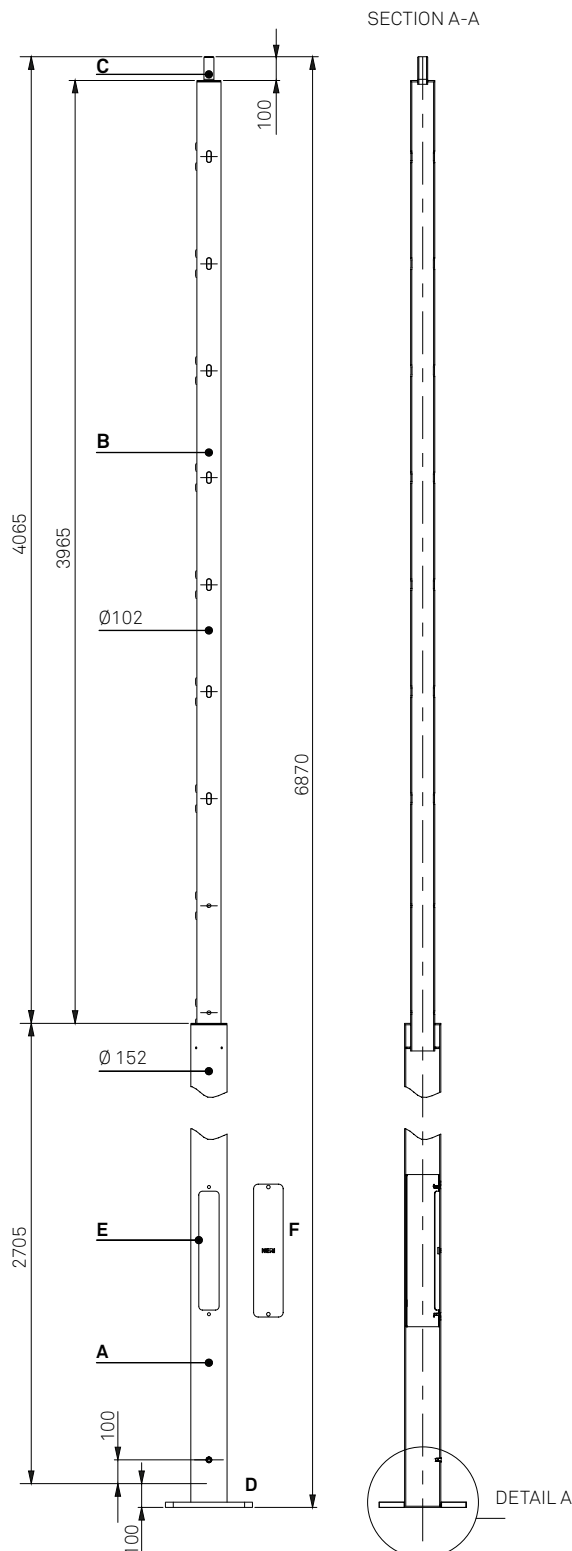
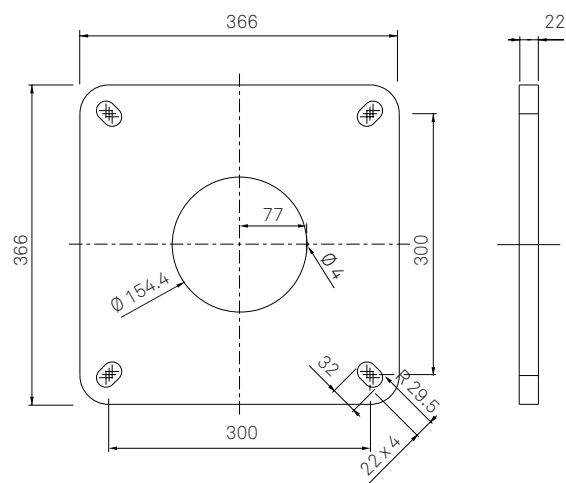
- neri grey
- pure white
- white aluminium
- grey aluminium
- jet black
- moss green

Accessories (on demand)

- Flange cover.
- IP54 kit for hand hole.

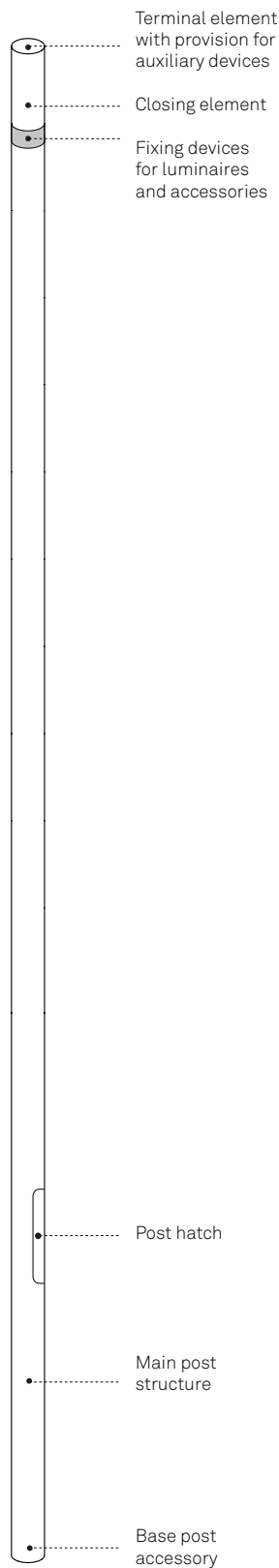
DRAWINGS

DETAIL A - FLANGE PLAN

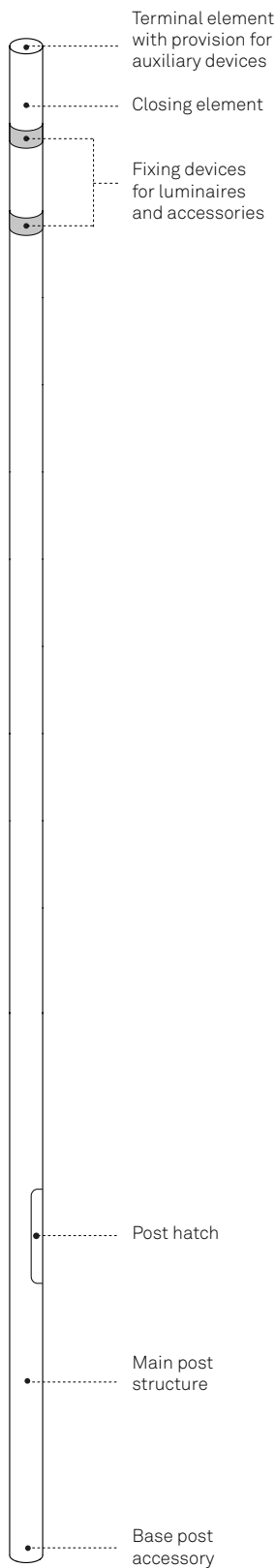


NEBULA POLE SYSTEM H 7,7 m

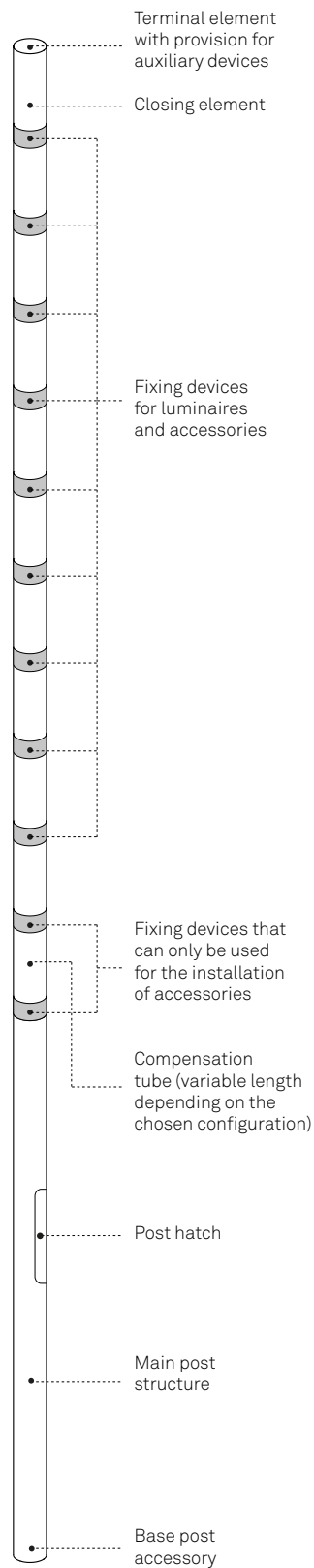
The Nebula system allows numerous configurations. The number of fixing devices for luminaires and accessories varies according to the main structure of the chosen post.



COD. ANEB.801.001



COD. ANEB.801.002

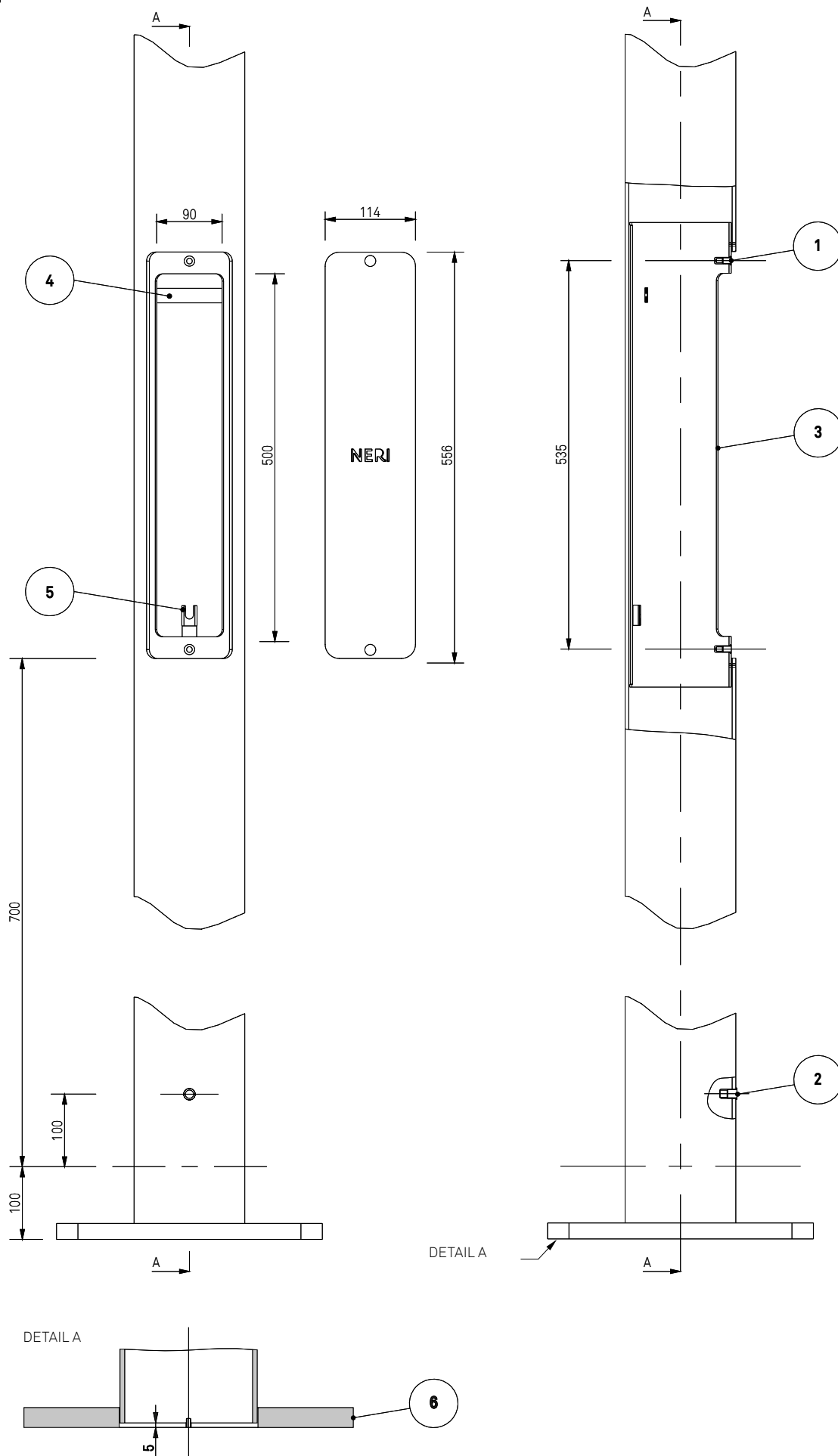


COD. ANEB.801.011

POST HATCH

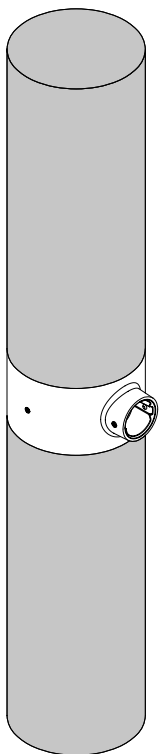
Legend

- 1 - M6 threaded insert for door closing
- 2 - M10 threaded insert for grounding
- 3 - Hatch Stop
- 4 - Terminal block fixing
- 5 - Post grounding fixing pocket
- 6 - Flange



FIXING DEVICES:

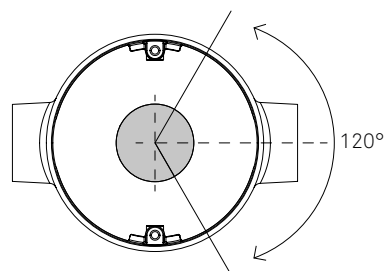
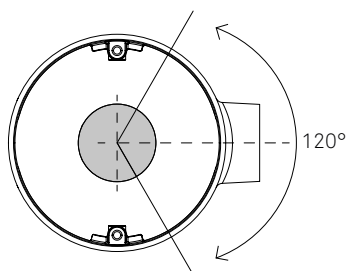
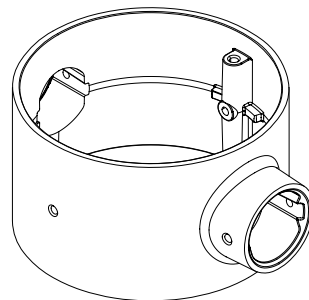
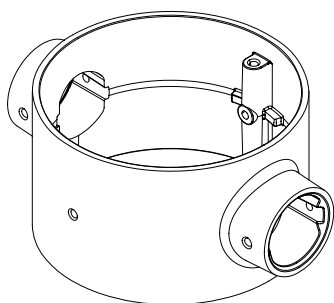
The fixing devices, in single or double version, allow the installation of accessories and luminaires to the type of post chosen.



The permissible rotation of the fixing device for the luminaires is 120°.

The accessories can be installed in 90° steps.

Using the double element the accessories / luminaires are placed at 180°.



COMPENSATION TUBE:

The compensation tubes are made of steel and hot-dip galvanized. The number and length of modular elements are determined by the final configuration of the chosen system.

Compensation pipe codes for post models_ ANEB.701.001, ANEB.701.002, ANEB.701.009

Cod. 9525_388_020
- H Tot. 450 mm

Cod. 9525_388_021
- H Tot. 900 mm

Cod. 9525_388_022
- H Tot. 1350 mm

Cod. 9525_388_023
- H Tot. 1800 mm

Cod. 9525_388_024
- H Tot. 2250 mm

Cod. 9525_388_025
- H Tot. 2700 mm

Cod. 9525_388_026
- H Tot. 3150 mm

Cod. 9525_388_027
- H Tot. 3600 mm

Cod. 9525_388_028
- H Tot. 4050 mm

Cod. 9525_388_029
- H Tot. 4500 mm

Cod. 9525_388_030
- H Tot. 360 mm

Cod. 9525_388_031
- H Tot. 810 mm

Cod. 9525_388_032
- H Tot. 1260 mm

Cod. 9525_388_033
- H Tot. 1710 mm

Cod. 9525_388_034
- H Tot. 2160 mm

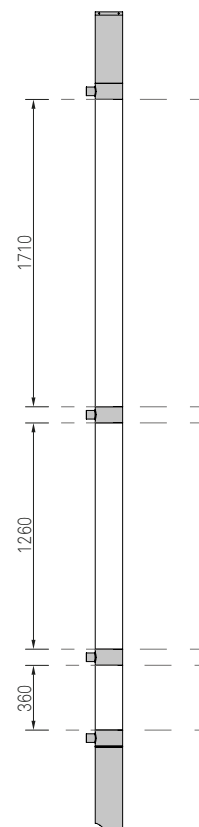
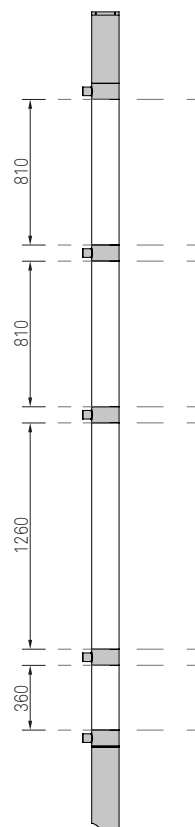
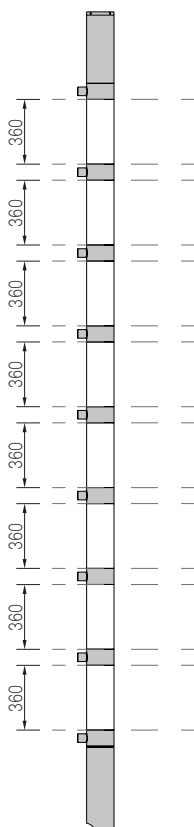
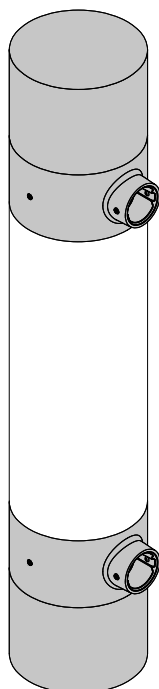
Cod. 9525_388_035
- H Tot. 2610 mm

Cod. 9525_388_036
- H Tot. 3060 mm

Cod. 9525_388_037
- H Tot. 3510 mm

Cod. 9525_388_038
- H Tot. 3960 mm

Cod. 9525_388_039
- H Tot. 4410 mm

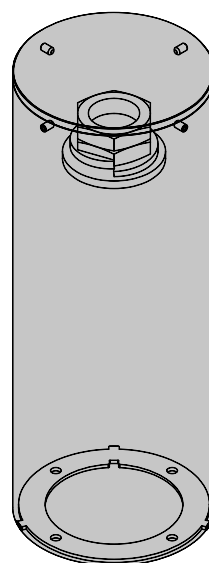
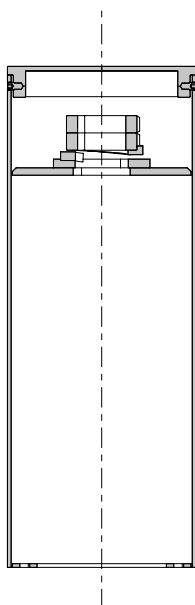
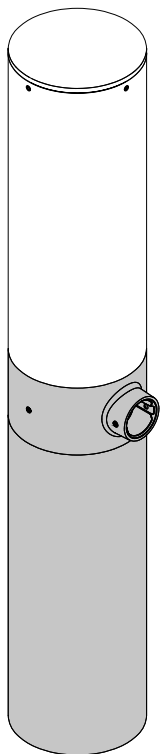


Example of compensation tubes with configuration cod. ANEB.701.009

LOCKING ELEMENT:

The closing tube enables the fixing of the components to the post core. The assembly is completed by a cover placed at the top end and fixed with four screws.

Cod. 9525_388_040
- H Tot. 398 mm

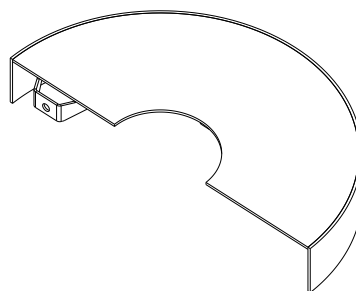
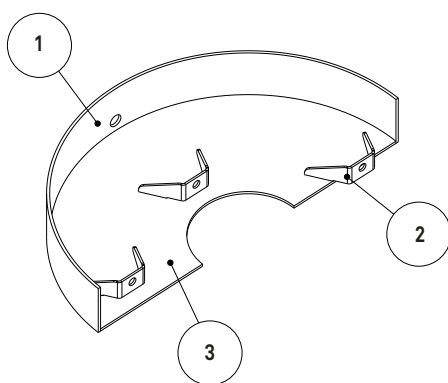
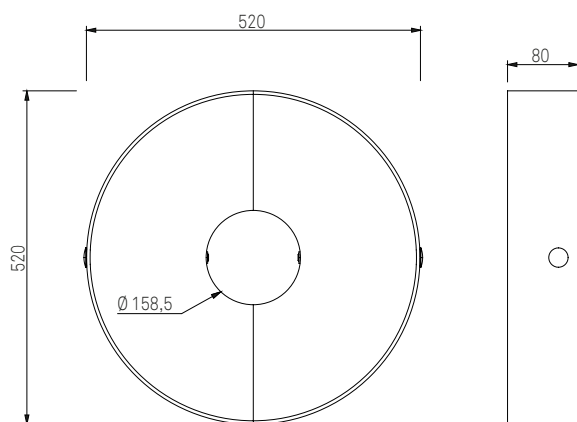
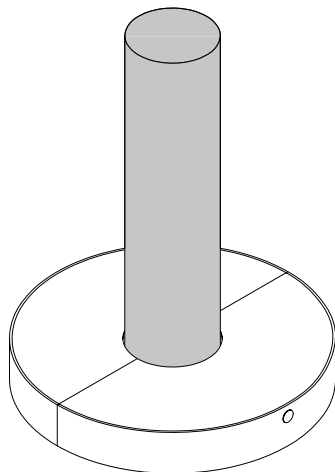


POST BASE ACCESSORY:

Steel flange cover and hot-dip galvanized, consisting of two separate elements. The separation of the component allows the use of the accessory also in phases after the installation of the post.

Legend

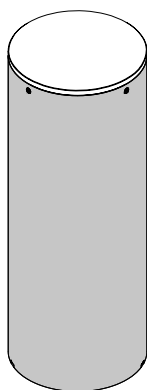
- 1 - Upper sheet metal
- 2 - Collar
- 3 - Lower sheet metal



TERMINAL ELEMENT:

Ready for auxiliary devices:

- Zhaga Connector (Book18)
- NEMA Connector (3 PIN, 7 PIN)



MAIN STRUCTURE POLES H 7.7 m

Conformity

CE certified post, in compliance with UNI EN 40-5.
Basic Wind Speed: 72 m/sec.

Materials

Steel tubes UNI EN 10219-1, hot galvanized as UNI EN ISO 1461 norm.

Structural elements

Pole in hot galvanized steel, composed by three tubes welded together:

- (A) Tube diam. 152 x 7205 mm.
- (B) Tube diam. 102 x 365 mm.
- (C) Tube diam. 42 x 100 mm.
- (D) Square flange.

Standard equipment

- Slot (E) (500 x 90 mm) for installation of terminal board, with or without fuse.
- Hand hole (F) (560 x 120 mm) to close the slot for terminal board with the Neri logo on it.
- Hole \varnothing 140 mm at the centre of flange for passage of electric cables.
- Terminal for grounding (bushing M10).

Dimensions and weight

- Height max: 7770 mm.
- Height useful: 7670 mm.
- Weight max: 169 kg.

Mounting

- Square Flange (D) 366 x 366 mm (thickness 22 mm), for mounting with 4 anchors bolts to the foundation plinth (anchors and bolts are not supplied).
- We recommend mounting with hidden flange, positioned 100 mm below the final pavement level.

Protection of surfaces

Please refer to the specific description of the product painting cycles.

Painting

Powder coating:

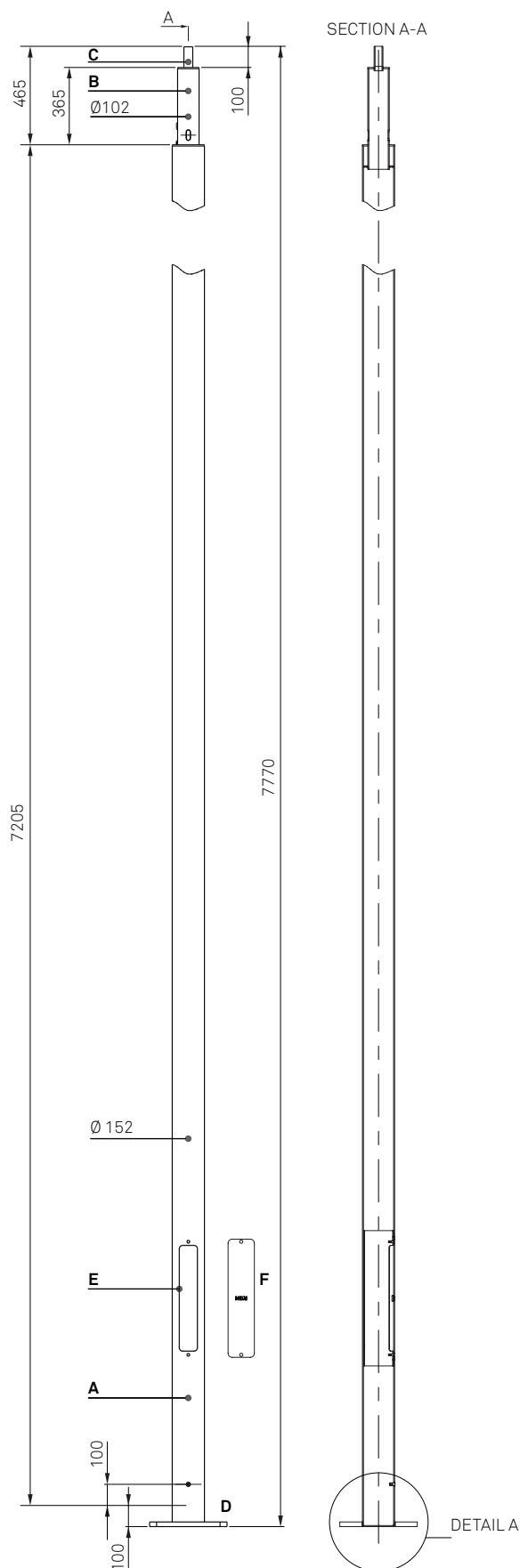
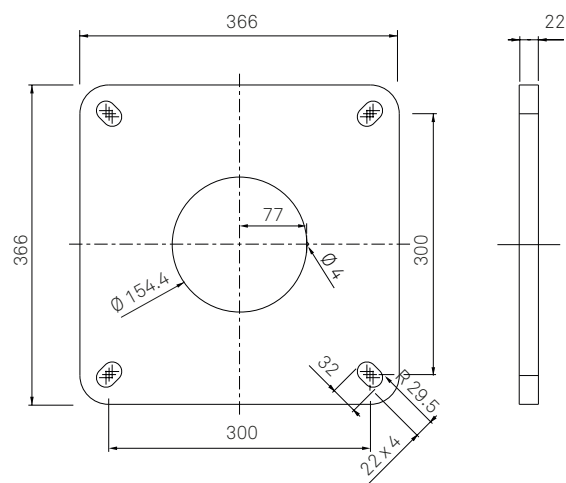
- neri grey
- pure white
- white aluminium
- grey aluminium
- jet black
- moss green

Accessories (on demand)

- Flange cover.
- IP54 kit for hand hole.

DRAWINGS

DETAIL A - FLANGE PLAN



MAIN STRUCTURE POLES H 7.7 m

Conformity

CE certified post, in compliance with UNI EN 40-5.
Basic Wind Speed: 72 m/sec.

Materials

Steel tubes UNI EN 10219-1, hot galvanized as UNI EN ISO 1461 norm.

Structural elements

Pole in hot galvanized steel, composed by three tubes welded together:

- (A) Tube diam. 152 x 6755 mm.
- (B) Tube diam. 102 x 815 mm.
- (C) Tube diam. 42 x 100 mm.
- (D) Square flange.

Standard equipment

- Slot (E) (500 x 90 mm) for installation of terminal board, with or without fuse.
- Hand hole (F) (560 x 120 mm) to close the slot for terminal board with the Neri logo on it.
- Hole \varnothing 140 mm at the centre of flange for passage of electric cables.
- Terminal for grounding (bushing M10).

Dimensions and weight

- Height max: 7770 mm.
- Height useful: 7670 mm.
- Weight max: 166 kg.

Mounting

- Square Flange (D) 366 x 366 mm (thickness 22 mm), for mounting with 4 anchors bolts to the foundation plinth (anchors and bolts are not supplied).
- We recommend mounting with hidden flange, positioned 100 mm below the final pavement level.

Protection of surfaces

Please refer to the specific description of the product painting cycles.

Painting

Powder coating:

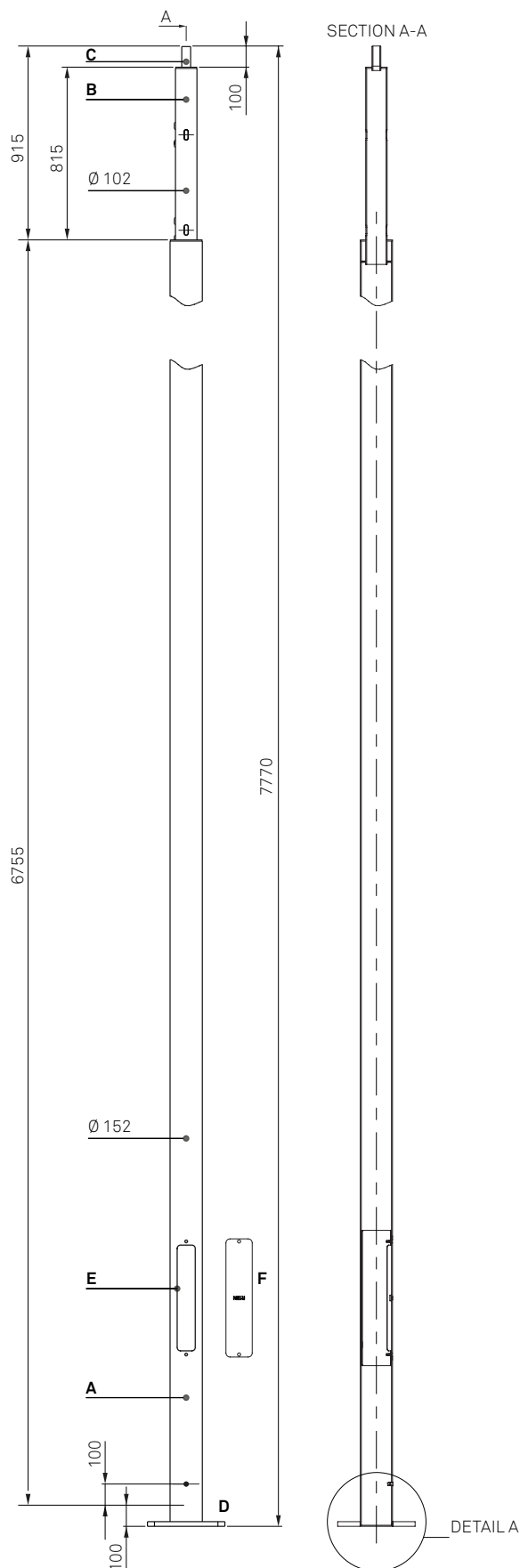
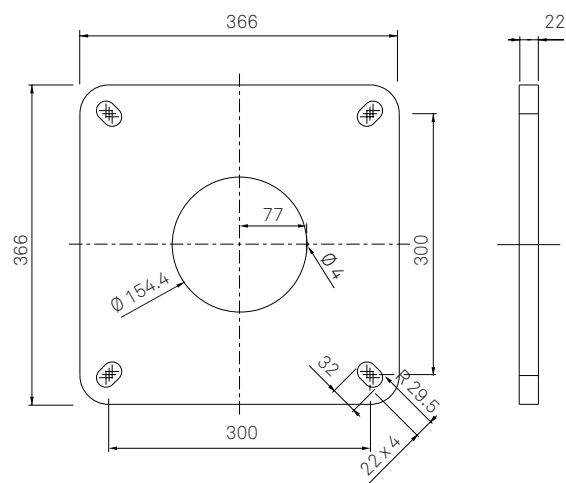
- neri grey
- pure white
- white aluminium
- grey aluminium
- jet black
- moss green

Accessories (on demand)

- Flange cover.
- IP54 kit for hand hole.

DRAWINGS

DETAIL A - FLANGE PLAN



MAIN STRUCTURE POLES H 7.7 m

Conformity

CE certified post, in compliance with UNI EN 40-5.
Basic Wind Speed: 72 m/sec.

Materials

Steel tubes UNI EN 10219-1, hot galvanized as UNI EN ISO 1461 norm.

Structural elements

Pole in hot galvanized steel, composed by three tubes welded together:

- (A) Tube diam. 152 x 2805 mm.
- (B) Tube diam. 102 x 4865 mm.
- (C) Tube diam. 42 x 100 mm.
- (D) Square flange.

Standard equipment

- Slot (E) (500 x 90 mm) for installation of terminal board, with or without fuse.
- Hand hole (F) (560 x 120 mm) to close the slot for terminal board with the Neri logo on it.
- Hole Ø 140 mm at the centre of flange for passage of electric cables.
- Terminal for grounding (bushing M10).

Dimensions and weight

- Height max: 7770 mm.
- Height useful: 7670 mm.
- Weight max: 140 kg.

Mounting

- Square Flange (D) 366 x 366 mm (thickness 22 mm), for mounting with 4 anchors bolts to the foundation plinth (anchors and bolts are not supplied).
- We recommend mounting with hidden flange, positioned 100 mm below the final pavement level.

Protection of surfaces

Please refer to the specific description of the product painting cycles.

Painting

Powder coating:

- neri grey
- pure white
- white aluminium
- grey aluminium
- jet black
- moss green

Accessories (on demand)

- Flange cover.
- IP54 kit for hand hole.

DRAWINGS

DETAIL A - FLANGE PLAN

