

Compliance

CE certificated post, compliant with standard UNI EN 40-5.
Fixing to foundation plinth (P) with flange (diam. 246 mm; thickness 15 mm; 4 slot for anchor bolts).
Exclusive pole for the light fixture: Light Alya.

Description

Lamp-post in UNI EN 10219-S235JR steel with hot-dip galvanized coating in accordance with UNI EN ISO 1461 and cast aluminium and aluminium sheet metal.

The lamp-post is made up of the following elements:
tapered pole (A) made up of three tubes welded to each other by the tapering, with the following dimensions: tube Ø 102 x 3000 mm - tube Ø 89 x 900 mm - tube Ø 60 x 105 mm.

The pole is fitted with:

- a slot (B - h. 350 x 55 mm) for installation of a Class II insulation terminal board;
- a grounding screw inside the slot compartment (B);
- a hatch (C) for closing the slot (B) with IP 40 protection rating;
- a slot (D - h. 80 x 40 mm) for the accessory's power pack 0006.125 (base lighting);
- 1°) conical element (diam. inf. 287 mm - diam. sup. 120 mm) in aluminium sheet (20/10 mm thick) at the bottom of the base;
- 2°) conical basement (diam. inf. 300 mm - diam. sup. 184 mm) in cast aluminium, height 800 mm, with four rectangular uprights; locking screw M8 in stainless steel;
- 3°) conical terminal elemen (diam. inf. 184 mm - diam. sup. 130 mm) in cast aluminium fixed to the basement (2°) by two M6 screw in stainless steel.

The overall height of the pole is 4005 mm.

Effective height of the pole 3900 mm.

Height of masonry 600 mm.

Total weight Kg 48.

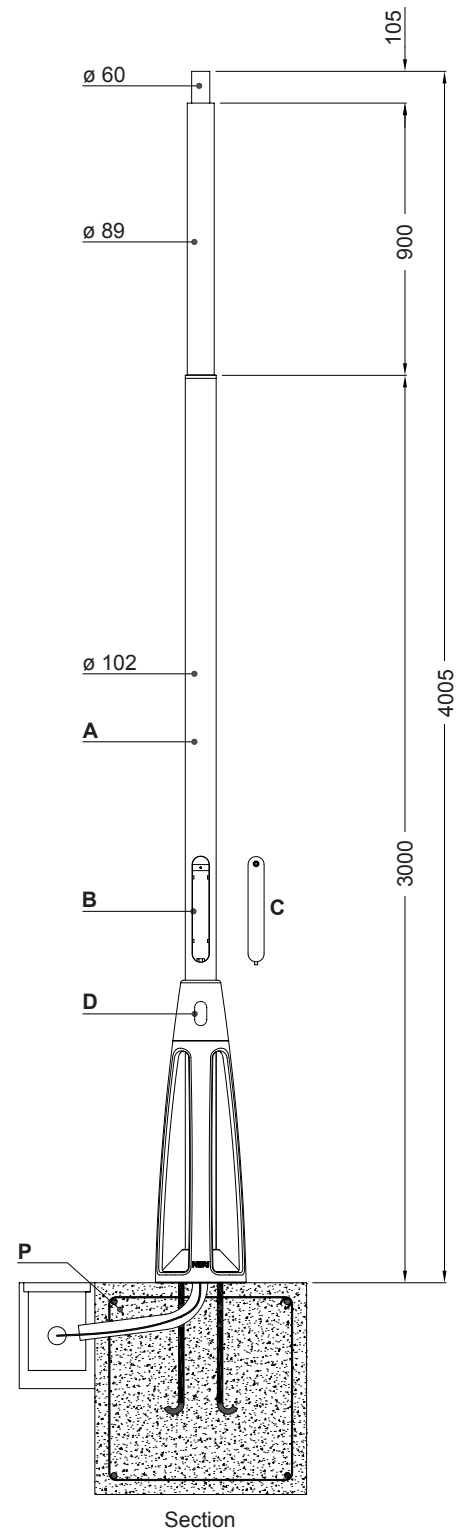
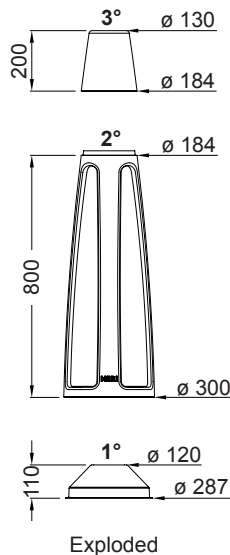
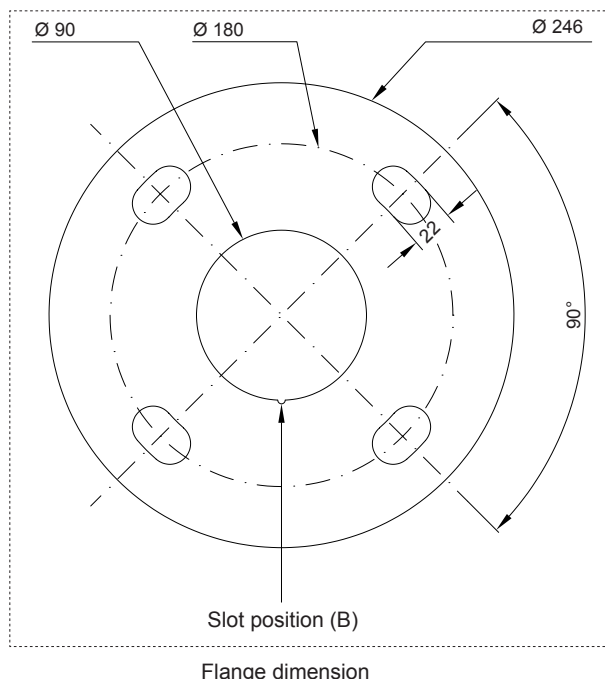
Accessories

Lghting system for base cod. 0006.125.

For details see its technical sheet.

Protection of surface

Please refer to the specific description of the product painting cycles.



NB: The measurements are in millimeters.

Neri S.p.A. Property - Any reproduction and use for its own purposes is forbidden.