

Use

Suitable support for one suspended light fixture

Materials

Made from S235J UNI EN 10219 and 10025 steel with hot-dip galvanized coating in accordance with UNI EN ISO 1461.

Protection of surfaces

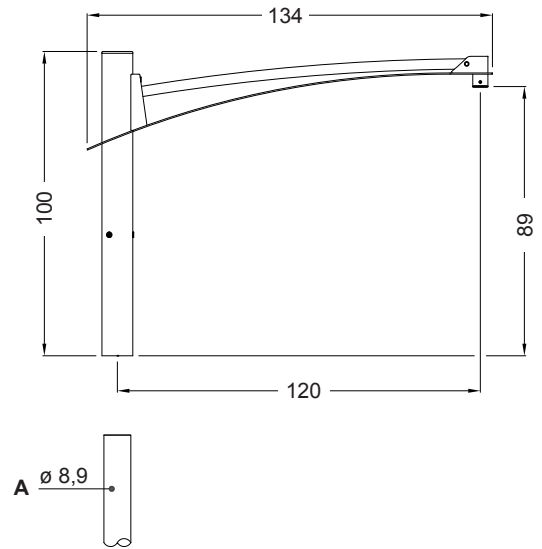
Please refer to the specific description of the product painting cycles

Dimensions and weight

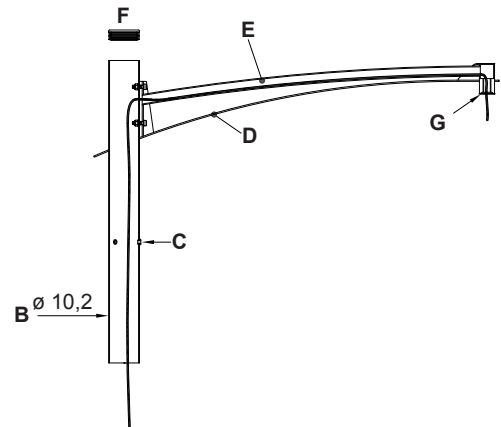
Height 100 cm; width 134 cm; usable protrusion 120 cm
Weight 16 Kg.

Description

The top section is made up of the following elements:
support element, 100 cm in height, made from steel pipe (B) (diam. 10.2 cm) for attachment onto posts with 8.9 cm diameter (A), supplied with three stainless steel M10 screws for bolting the element to the post (C) and plastic end cap (F);
curved arm made from steel pipe (E - diam. 3.3 cm), fixed with two M12 stainless steels stop nuts to the vertical pipe for attachment onto the post (B). A cylindrical element with a 3/4" GAS (G) coupling is welded to the end section of the arm for attachment of the light fixture;
steel sheet (D - thickness 0.4 cm), welded to the arm (E).



Side view



Section

NB: Measures in cm.

Property of NERI S.p.A. - Any use and reproduction for personal purposes is strictly prohibited.