

Description

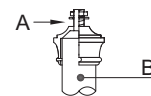
The top section is made in UNI EN 1561 cast iron and corresponds in shape, size to the diagrams, which are an integral part of the specifications.

The top section is height 10 cm (diam. 13,5 cm) and with a 3/4" GAS threaded tube (A) with nut and rose in stainless steel for attaching the light fixture.

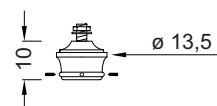
The top section is fitten into the core and is secured with three M6 stainless steel grubscrews.

Protection of surfaces

Please refer to the specification on painting procedures of the fixture's materials.



Section



Front view