

## Description

The top section is made in UNI EN 1561 cast iron, UNI EN 1563 nodular cast iron and S235J UNI EN 10219-1 steel, galvanized to UNI ISO 2081 standards and corresponds in shape, size and ornamentation to the diagrams, which are an integral part of the specifications.

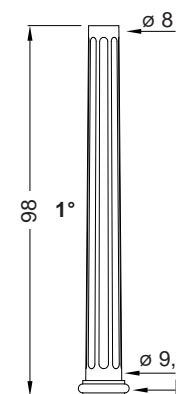
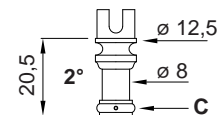
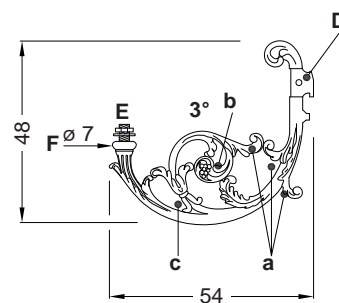
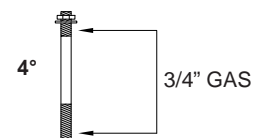
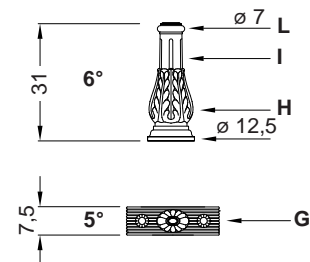
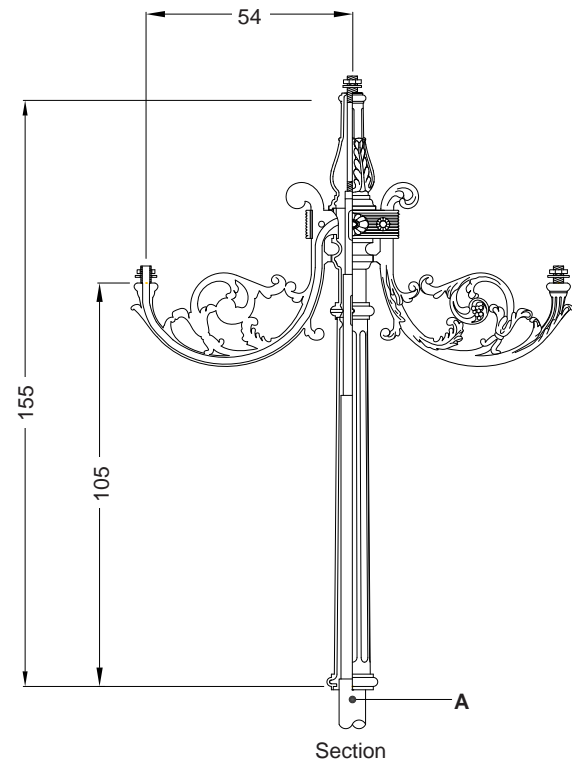
The top section is composed as follows:

- 1°) Column in cast iron (lower diam. 9.5 cm, top diam. 8 cm, height 98 cm), tapered and decorated with eight flutes and a torus (B) at the base.
- 2°) Tapered cast iron element (lower diam. 8 cm, top diam. 12.5 cm, height 20.5 cm) decorated with a torus (C), a cyma, a scotia and fillets. At the top are two slots at 180° to each other into which the brackets are hooked. The element is fitted onto the core and is secured with three M8 stainless steel grubscrews, one of which penetrates into a slot (M) in the core (A) to prevent rotation of the element.
- 3°) Two cast iron brackets decorated as in the diagram. The decoration of each bracket is composed as follows: a large volute situated above the attachment hook (D), three leaves ending in volutes (a), a central fruit motif (b), a double leaf pointing both upwards and downwards (c), four other leaves and a cymatium at the end (F, diam. 7 cm). Each bracket is 48 cm high and 54 cm wide, and is fitted with a 3/4" GAS threaded tube with nut and rose in stainless steel (E) for attaching the light fixture, a hole and an attachment hook for assembly (D), and an internal tube for a 1.4 cm diameter power cable. The assembled bracket protrudes for a distance of 54 cm.
- 4°) A galvanized steel tube with a 3/4" GAS thread at each end and a stainless steel locknut, to be screwed into the core (A).
- 5°) Two elements height 7.5 cm in nodular cast iron, each decorated with nine flutes and a flower at the centre (G). When assembled together, these two elements form a collar that covers the slotted part of the second element. They each have holes for the insertion of two M10 stainless steel bolts that secure them to the brackets.
- 6°) A tapered cast iron element (lower diam. 12.5 cm, top diam. 7 cm, height 31 cm) decorated with leaves (H), four small flutes (I) and a torus at the top (L).

The total height of the top section is 155 cm.

## Protection of surfaces

Please refer to the specification on painting procedures of the fixture's materials.



NB: Measures in cm.

Exploded

Property of NERI S.p.A. - Any use and reproduction for personal purposes is strictly prohibited.