

## Destination of use

Suitable for the support of 2 fixtures Light Alya.

## Material

Made of cast aluminum.

## Surfaces protection

Refer to the specific descriptions on the cycles of painting materials.

## Dimension and weight

Height 291 mm, width 434 mm.

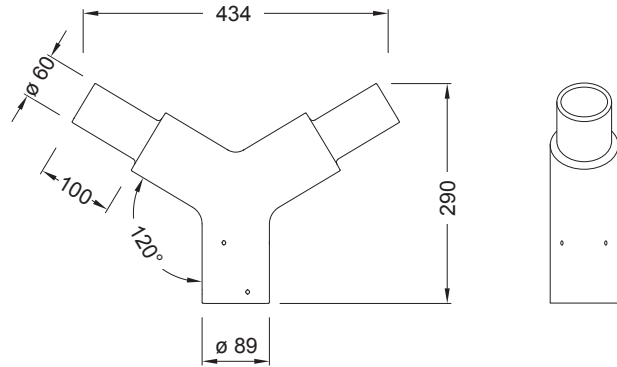
Weight 3 kg.

## Description

Element in cast aluminum (Ø 89 mm) to fit clip-on pole (Ø 60 mm) to about 100 mm.

The element is curved shaped pipe with an angle of 120°, ends with coupling element for the support of 2 light fixtures.

The top has 6 grains in stainless steel for fixing to the pole.



Side view

Front view