

# NERI



City Walk 2 has just opened in Dubai. It is located on Al Safa street, the large street that leads from the main road Sheikh Zayed road towards the sea with a beautiful view of the world's tallest skyscraper, Burj Khalifa. City Walk 2 reproduces the concept of a European city with shops and businesses lined up along a main road where visitors transit.

**A Dubai è stato appena inaugurato City Walk 2. Posizionato lungo Al Safa street, la grande via che dall'asse viario principale Sheikh Zayed road conduce verso il mare con la bellissima vista del Burj Khalifa, il grattacielo più alto del mondo, riproduce un luogo urbano europeo, in cui i negozi e i locali si affacciano sulla strada principale percorsa dai visitatori.**



# City Walk 2

## Neri project















This isn't a 'closed' shopping centre on several floors, but instead a street with indoor and outdoor squares on street level, where it is pleasant to walk around and stop occasionally.

**Non si tratta quindi di un centro commerciale “chiuso”, su più piani, ma di uno spazio con piazze, esterne ed interne, a livello stradale, in cui è piacevole passeggiare e sostare.**



CITY  
WALK

مرحبتين  
كبار



MERAAAS



For the lighting and furnishings of City Walk 2, Neri produced several different products with LED light sources that would all reflect the essential style of the modern architecture chosen for the buildings.

**Per l'illuminazione e l'arredo di City Walk 2, Neri ha realizzato diversi prodotti, tutti con sorgenti LED, che riprendono le linee essenziali dell'architettura moderna con cui sono stati disegnati gli edifici.**













Lamp post with square bases and one or two offset lights were designed for the main road and the square behind it.

**Nella via principale e nella piazza retrostante sono stati progettati lampioni a base quadrata a uno o a due luci sfalsate.**









GEORG JENSEN  
جورج جالنسن

NOW OPEN  
BUILD. 1, STORE 2F

تم الافتتاح  
البنين اناشرا للمجم

THE  
NEW  
COLLECTION









































In the central streets of City Walk 2, luminous columns have been designed and manufactured. This 'open' geometric solution really is impressive.

**Nelle vie centrali di City Walk 2 sono state realizzate colonne luminose; una soluzione geometrica “aperta” di grande impatto.**











































Smith

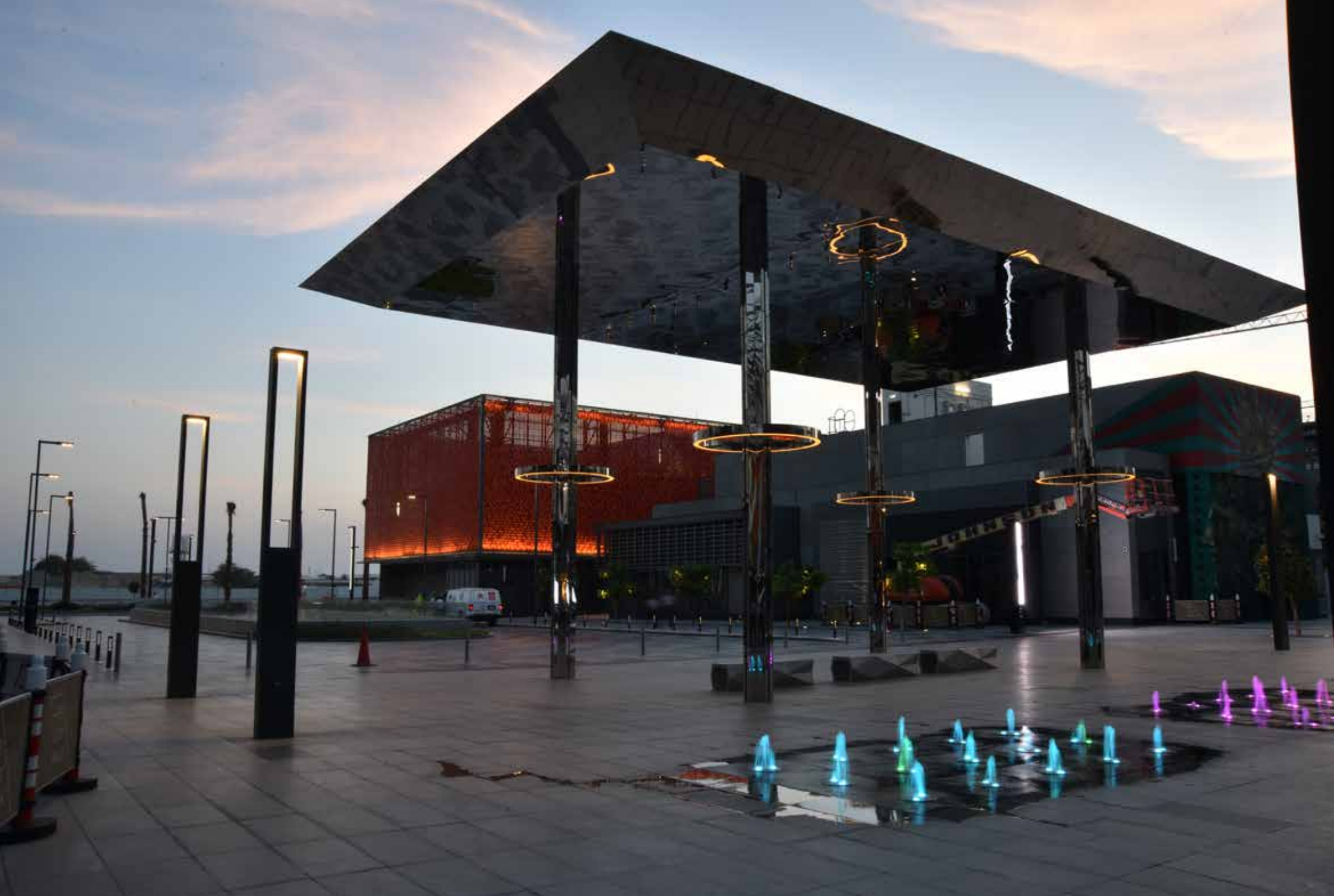
Saladicious

















RE  
CIN

RE  
CIN



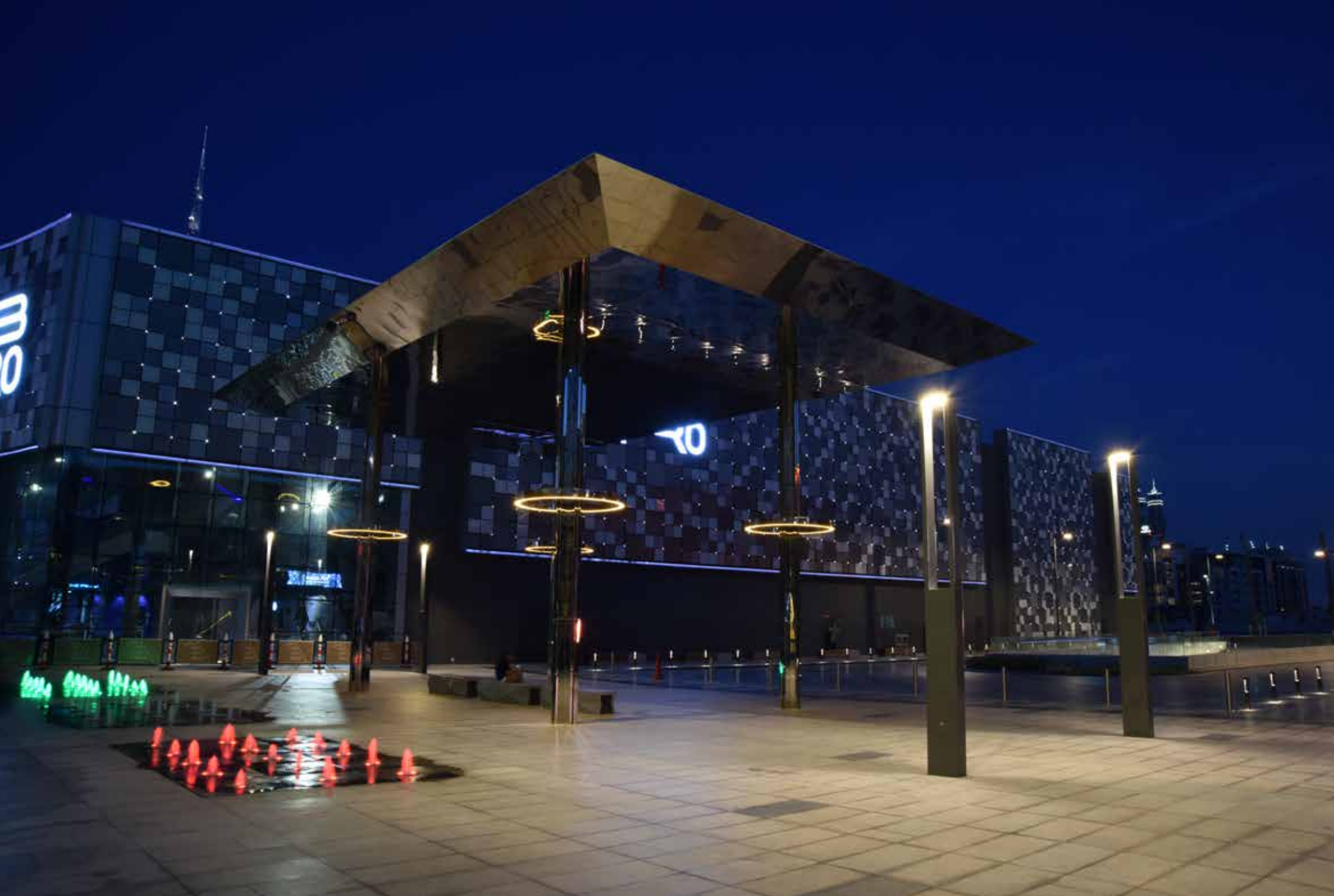




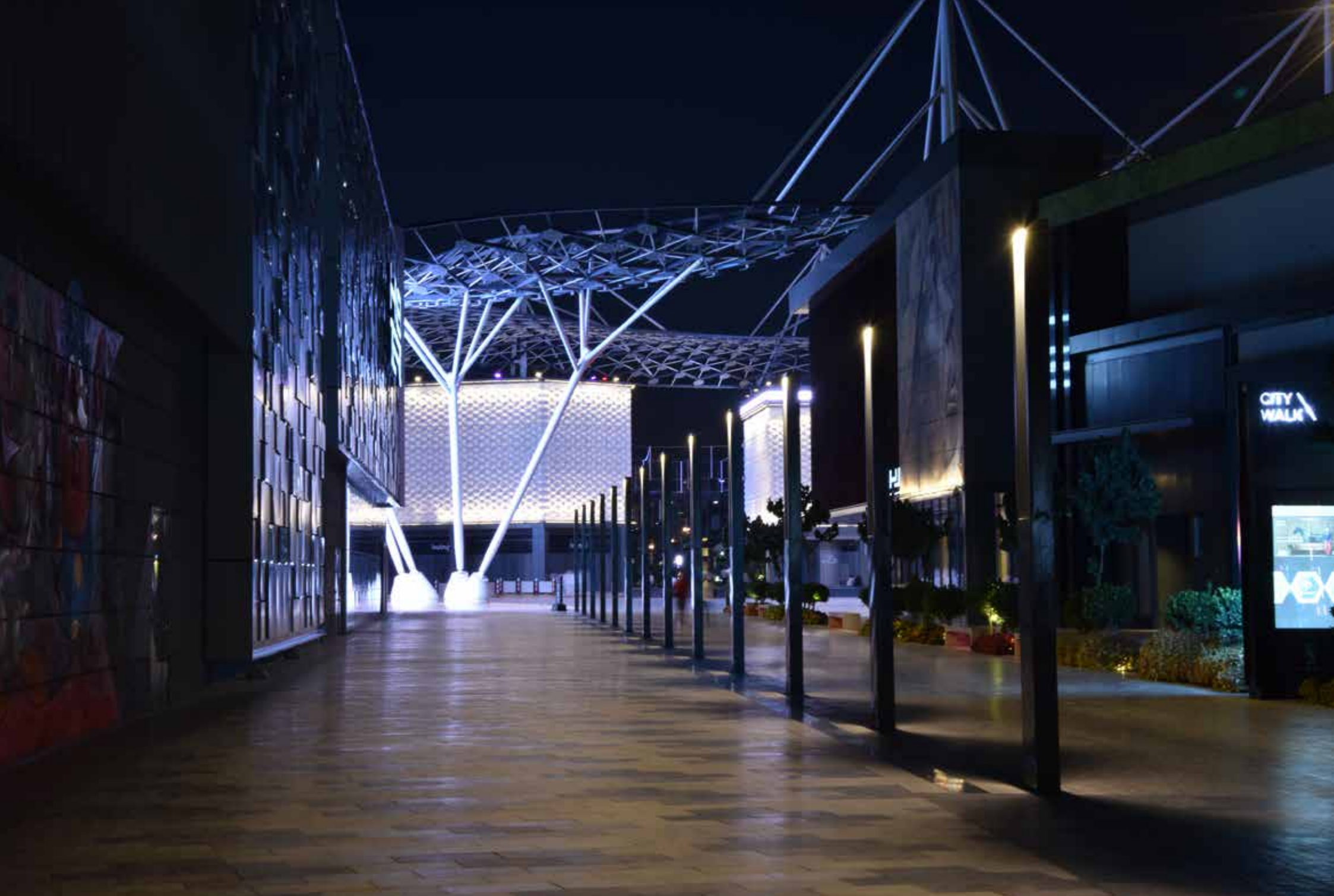












Pedestrian walkways are delimited from road traffic by lit bollards that have the same shape as the columns.

**A delimitare gli spazi pedonali, separandoli da quelli veicolari, sono stati progettati dissuasori luminosi che riproducono in piccolo la forma delle colonne.**





















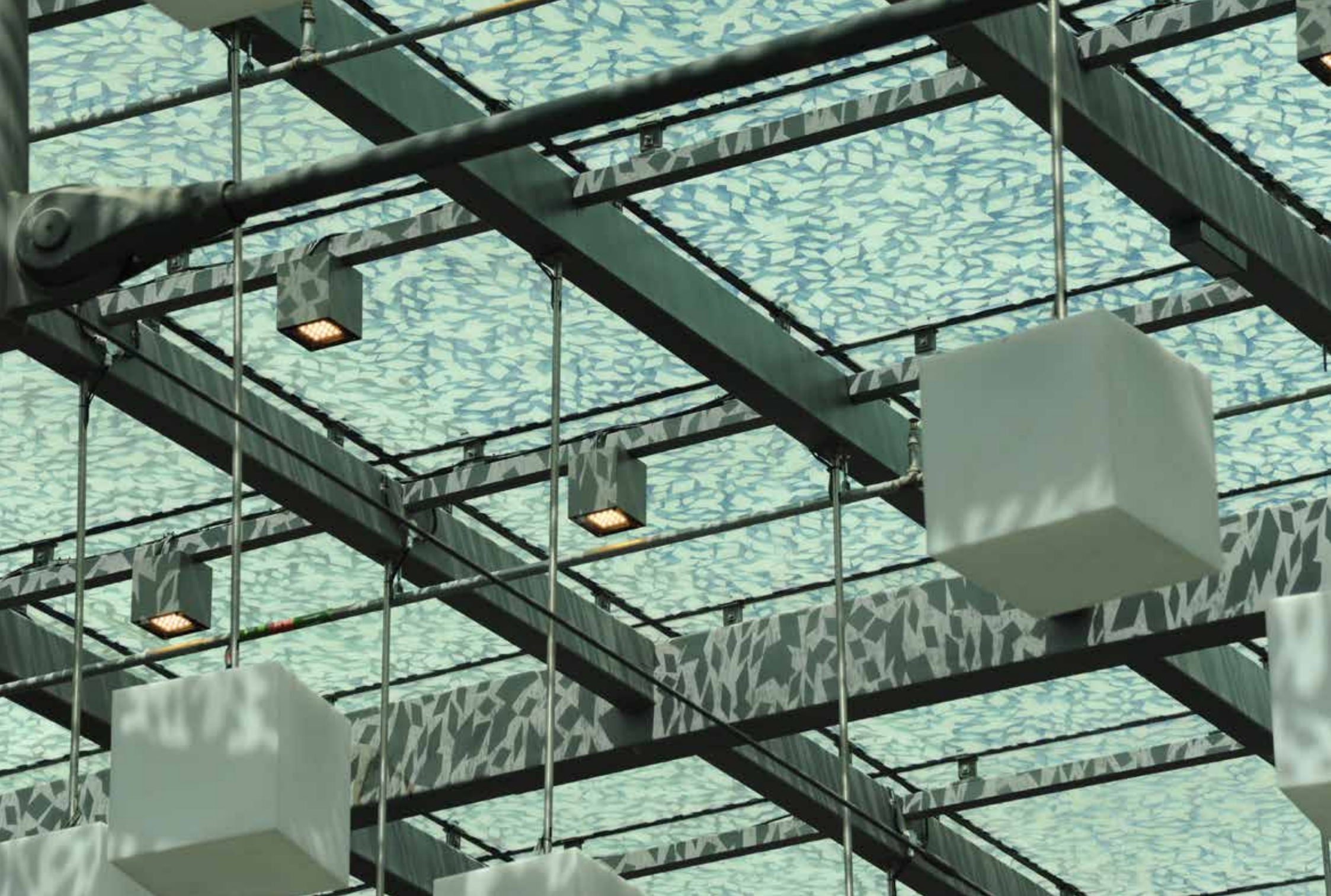


Neri has also provided illumination for the large indoor galleries with cubic lights mounted on the glass ceiling.

**Neri ha anche illuminato le grandi gallerie interne con apparecchi a forma di cubo, applicati al soffitto in vetro.**

















## **CREDITS**

Photographs © Antonio Neri

## **CREDITI**

Fotografie © Antonio Neri



Thank you  
**Grazie**