

Kiosks

Usefulness and elegance are qualities that combine perfectly in these structures with their many details and accessories. Devised as ornamental features for urban settings, kiosks can also represent a chance for social interaction.



KIOSKS

Versions overview

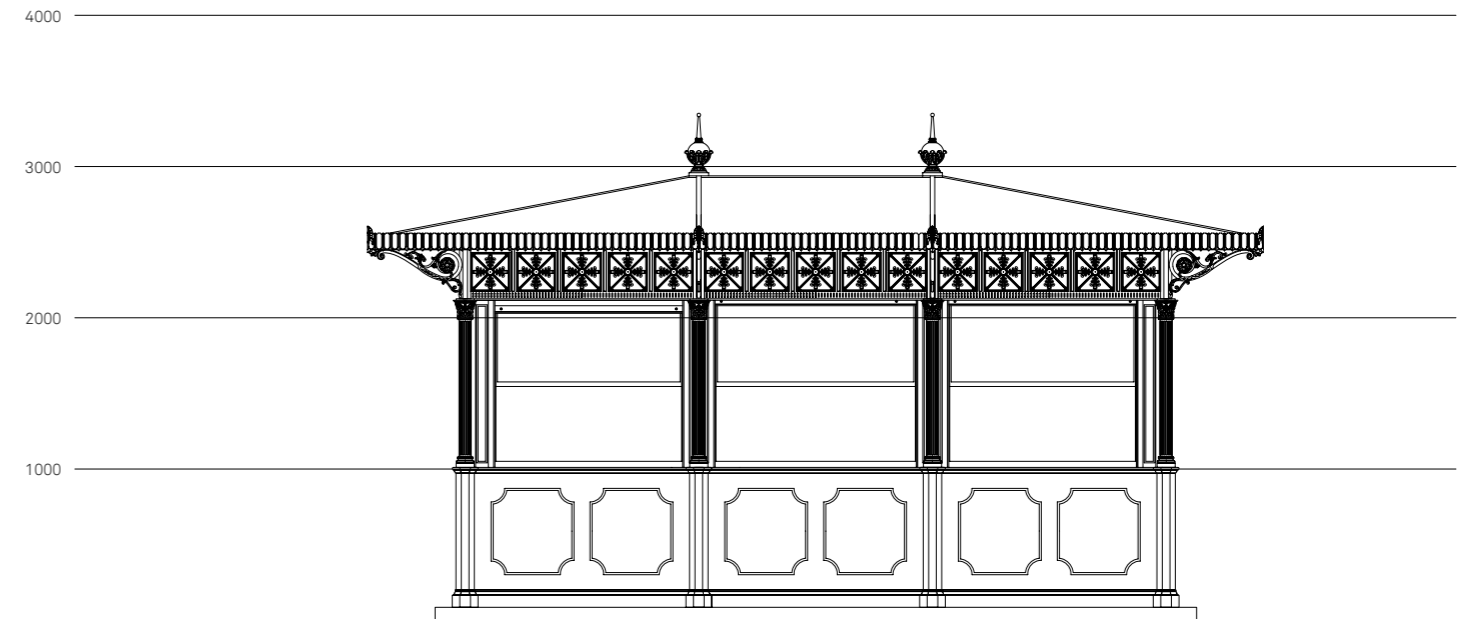
Kiosks are available in two different versions: simplified and decorated.

scale 1:50
dimensions in mm

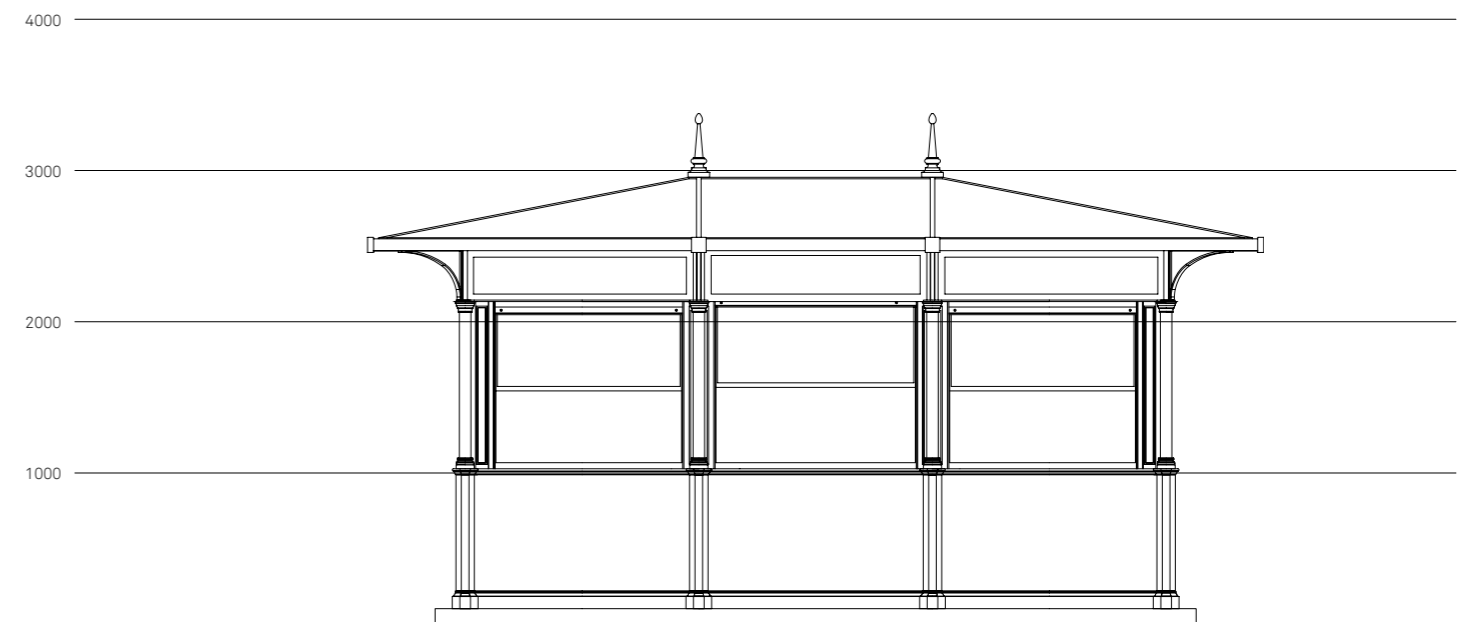
The standard kiosk includes base panelling formed by a skirt and a window ledge, both made of cast iron, connected to each other by an internally insulated hot-galvanized steel sheet. The window frames are made from aluminium profile bars and 6/7 mm-thick shatterproof glass, and open vertically. The door (one up to 12 modules, two from 14 to 22 modules) is made with net port of 90 cm, opens outwards, and is fitted with a door check. The roller shutters, made of internally insulated steel and complete with exterior locks, are manually operated but spring-assisted. The rollers are protected, on the inside, by wooden boxes with openable hatch for maintenance and, on the outside, by a cast iron band with backlit checked decoration; on the simplified version, the band is made of a steel plugging sheet. Depending on their size, kiosks are supplied with one or more 35 cm-diameter central globes for interior lighting. The cover is made with hot-galvanized steel girders that hold up a roof in copper-coloured fibreglass, a layer of insulation and a match board false ceiling also present in the outer cantilever roof (excluding the simplified version). Standard colours are Neri grey and RAL 6005 green; other colours are available on request.

Materials. Cast iron load-bearing columns with dividers in painted steel. Door and window profiles in aluminium with different opening systems and laminated or double glazing, protected on the outside by steel roller shutters. Roof with steel beams. Outer pitches in fibreglass and matchboard false ceiling inside. Internal shutter boxes in white lacquered wood with inspection opening.

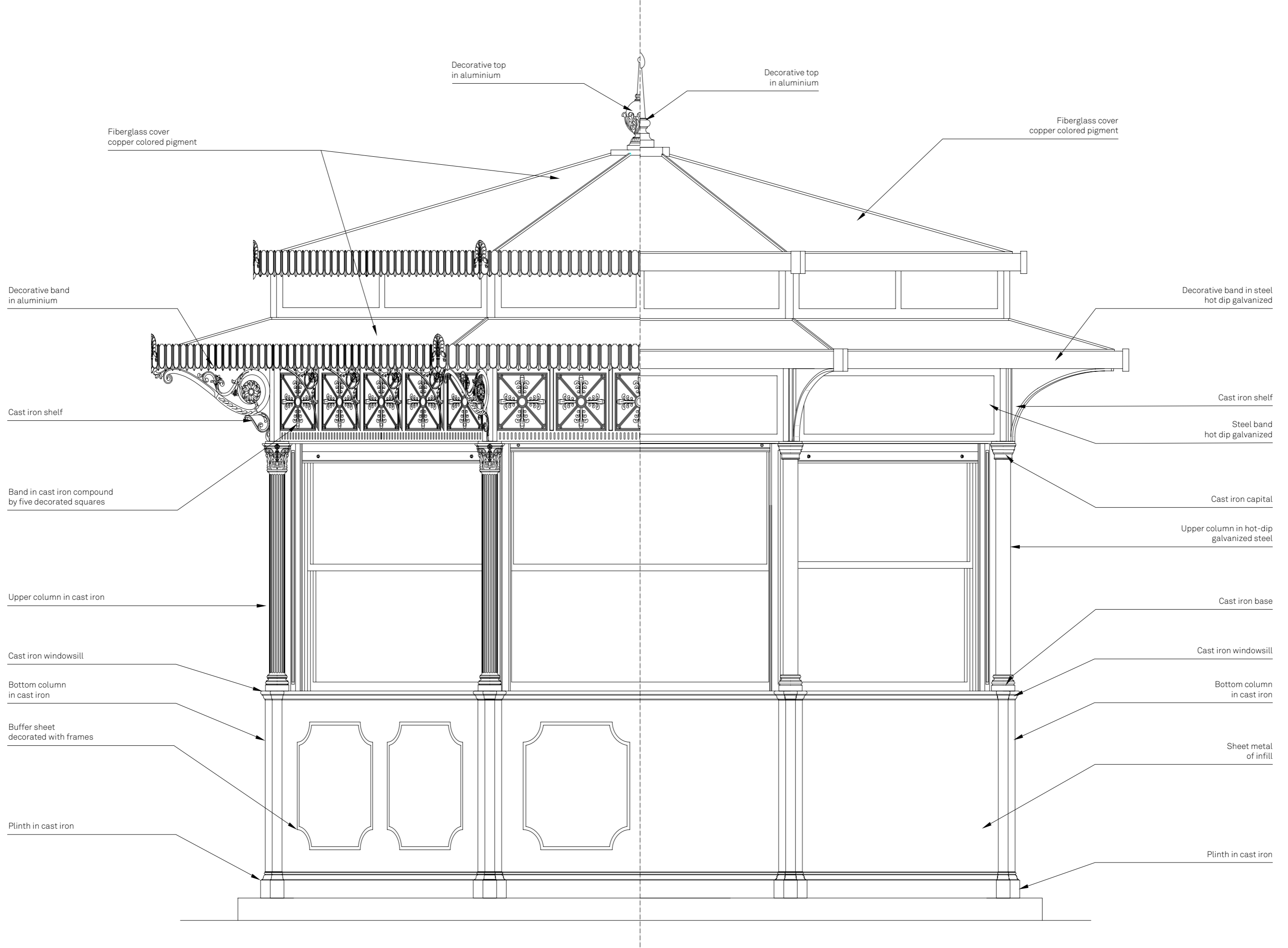
Finishes. Hot-dip galvanized steel, standard paintwork in Neri Grey or RAL 6005 green.



Decorated kiosk



Simplified kiosk



KIOSKS

Decorate details



Simplified details



KIOSKS

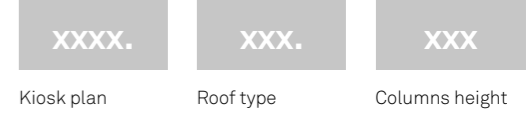
Composition of the code

The code is composed of three consecutive parts, which correspond to kiosk plan, roof type and height of selected columns.

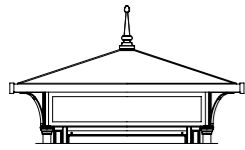
scala 1:25
dimensions in mm

Kiosks are available with different roof types, determined by plan and its extension.

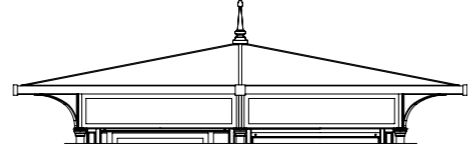
Kiosks are available in three different heights, depending on the intended use.



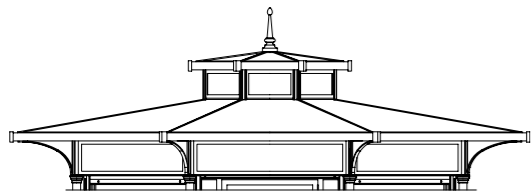
Roof type - Simplified kiosks



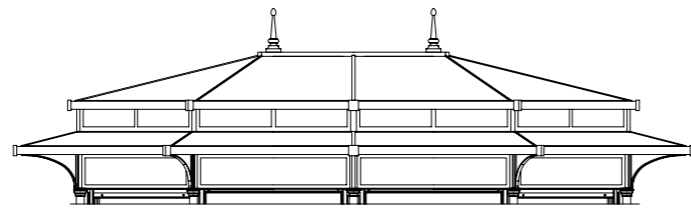
Code XXXX.005.XXX
Hipped roof with reduced projection
(available only for kiosks with plan 3104, 3105, 3106 codes)



Code XXXX.001.XXX
Hipped roof
(not available for kiosks with plan 3104, 3105, 3106, 3170, 3171, 3172, 3173, 3180, 3181, 3182, 3183 codes)

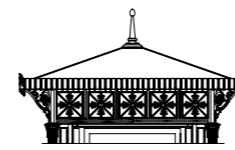


Code XXXX.004.XXX
Double roof with skylight
(available only for kiosks with plan 3142, 3170, 3171, 3172, 3173, 3180, 3181, 3182, 3183 codes)

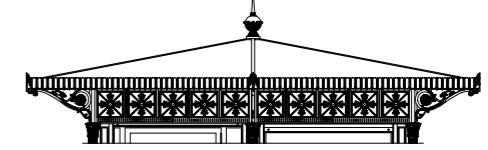


Code XXXX.002.XXX
Double hipped roof
(not available for kiosks with plan 3104, 3105, 3106, 3170, 3171, 3172, 3173, 3180, 3181, 3182, 3183 codes)

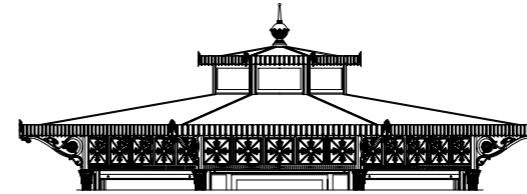
Roof type - Decorated kiosks



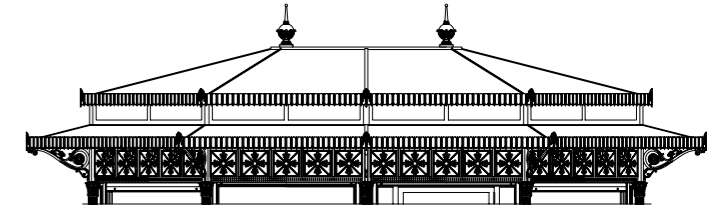
Code XXXX.005.XXX
Hipped roof with reduced projection
(available only for kiosks with plan 3104, 3105, 3106 codes)



Code XXXX.001.XXX
Hipped roof
(not available for kiosks with plan 3104, 3105, 3106, 3170, 3171, 3172, 3173, 3180, 3181, 3182, 3183 codes)

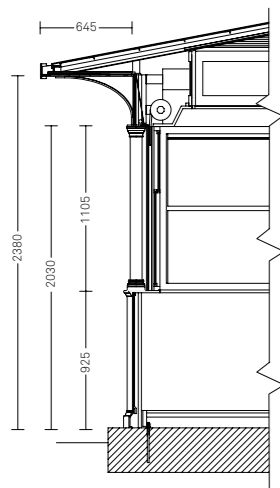


Code XXXX.004.XXX
Double roof with skylight
(available only for kiosks with plan 3142, 3170, 3171, 3172, 3173, 3180, 3181, 3182, 3183 codes)

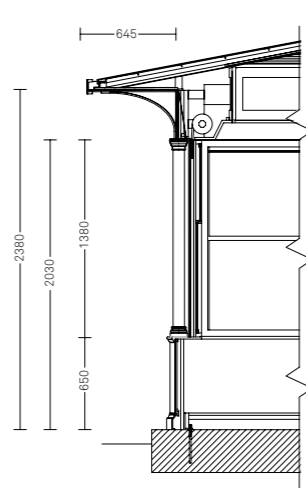


Code XXXX.002.XXX
Double hipped roof
(not available for kiosks with plan 3104, 3105, 3106, 3170, 3171, 3172, 3173, 3180, 3181, 3182, 3183 codes)

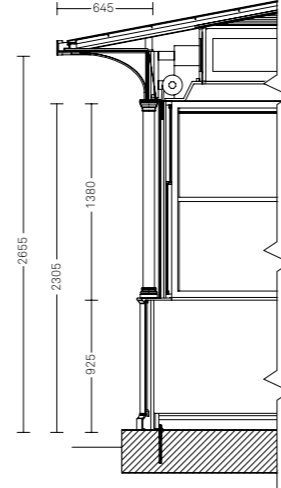
Columns height - Simplified kiosks



Code XXXX.XXX.010
Standard height kiosk

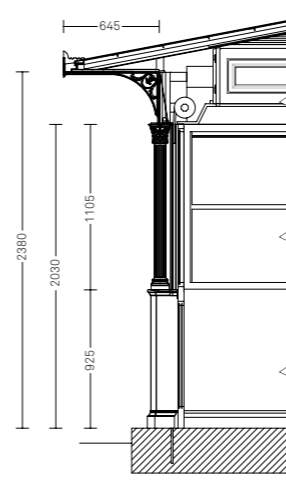


Code XXXX.XXX.310
Low sill kiosk

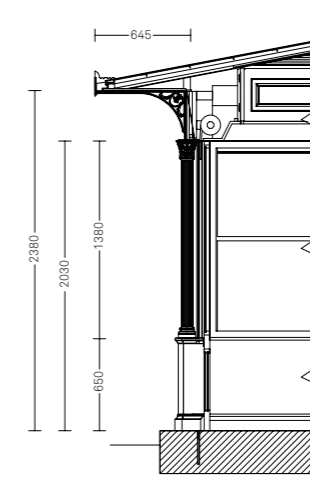


Code XXXX.XXX.610
Increased height kiosk

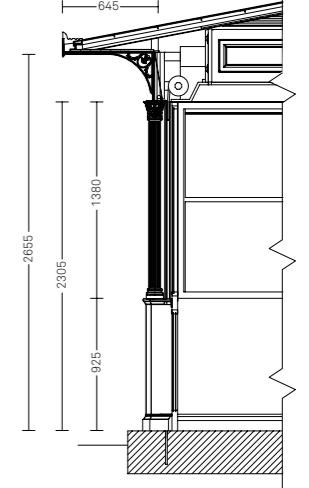
Columns height - Decorated kiosks



Code XXXX.XXX.001
Standard height kiosk



Code XXXX.XXX.300
Low sill kiosk



Code XXXX.XXX.600
Increased height kiosk

KIOSKS

Rectangular plan

Kiosks with rectangular plan cover a minimum surface area of 4.8m² and a maximum surface area of 78.9m².

scale 1:400
dimensions in mm



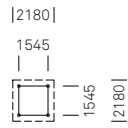
Kiosk plan



Roof type

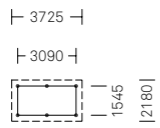


Columns height



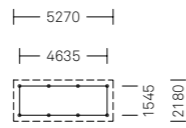
Simplified	Decorated
3104.005.010	3104.005.001
3104.005.310	3104.005.300
3104.005.610	3104.005.600

- Usable area 2.4m²
- Covered area 4.8m²
- Modules 4



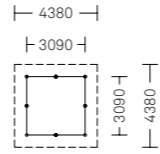
Simplified	Decorated
3105.005.010	3105.005.001
3105.005.310	3105.005.300
3105.005.610	3105.005.600

- Usable area 4.8m²
- Covered area 8.1m²
- Modules 6



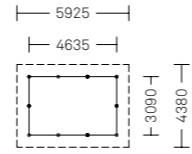
Simplified	Decorated
3106.005.010	3106.005.001
3106.005.310	3106.005.300
3106.005.610	3106.005.600

- Usable area 7.1m²
- Covered area 11.5m²
- Modules 8



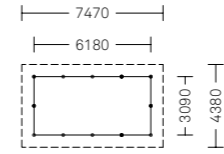
Simplified	Decorated
3108.001.010	3108.001.001
3108.001.310	3108.001.300
3108.001.610	3108.001.600
3108.002.010	3108.002.001
3108.002.310	3108.002.300
3108.002.610	3108.002.600

- Usable area 9.5m²
- Covered area 19.2m²
- Modules 8



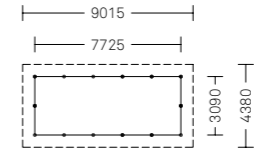
Simplified	Decorated
3109.001.010	3109.001.001
3109.001.310	3109.001.300
3109.001.610	3109.001.600
3109.002.010	3109.002.001
3109.002.310	3109.002.300
3109.002.610	3109.002.600

- Usable area 14.3m²
- Covered area 26m²
- Modules 10



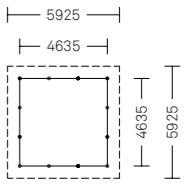
Simplified	Decorated
3110.001.010	3110.001.001
3110.001.310	3110.001.300
3110.001.610	3110.001.600
3110.002.010	3110.002.001
3110.002.310	3110.002.300
3110.002.610	3110.002.600

- Usable area 19.1m²
- Covered area 32.7m²
- Modules 12



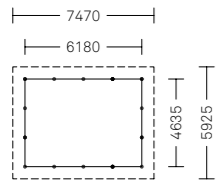
Simplified	Decorated
3111.001.010	3111.001.001
3111.001.310	3111.001.300
3111.001.610	3111.001.600
3111.002.010	3111.002.001
3111.002.310	3111.002.300
3111.002.610	3111.002.600

- Usable area 23.9m²
- Covered area 39.5m²
- Modules 14



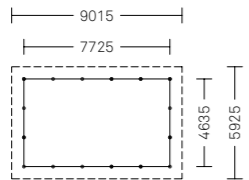
Simplified	Decorated
3112.001.010	3112.001.001
3112.001.310	3112.001.300
3112.001.610	3112.001.600
3112.002.010	3112.002.001
3112.002.310	3112.002.300
3112.002.610	3112.002.600

- Usable area 21.5m²
- Covered area 35.1m²
- Modules 12



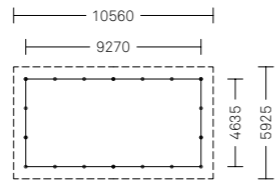
Simplified	Decorated
3113.001.010	3113.001.001
3113.001.310	3113.001.300
3113.001.610	3113.001.600
3113.002.010	3113.002.001
3113.002.310	3113.002.300
3113.002.610	3113.002.600

- Usable area 28.7m²
- Covered area 44.3m²
- Modules 14



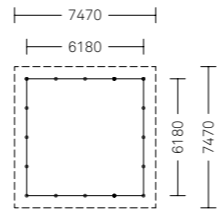
Simplified	Decorated
3114.001.010	3114.001.001
3114.001.310	3114.001.300
3114.001.610	3114.001.600
3114.002.010	3114.002.001
3114.002.310	3114.002.300
3114.002.610	3114.002.600

- Usable area 35.8m²
- Covered area 53.4m²
- Modules 16



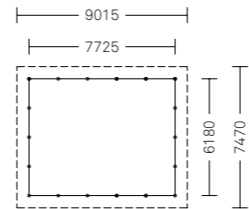
Simplified	Decorated
3115.001.010	3115.001.001
3115.001.310	3115.001.300
3115.001.610	3115.001.600
3115.002.010	3115.002.001
3115.002.310	3115.002.300
3115.002.610	3115.002.600

- Usable area 43m²
- Covered area 62.6m²
- Modules 18



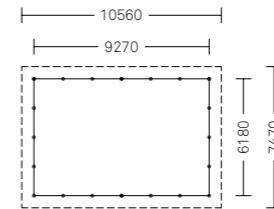
Simplified	Decorated
3116.001.010	3116.001.001
3116.001.310	3116.001.300
3116.001.610	3116.001.600
3116.002.010	3116.002.001
3116.002.310	3116.002.300
3116.002.610	3116.002.600

- Usable area 38.2m²
- Covered area 55.8m²
- Modules 16



Simplified	Decorated
3117.001.010	3117.001.001
3117.001.310	3117.001.300
3117.001.610	3117.001.600
3117.002.010	3117.002.001
3117.002.310	3117.002.300
3117.002.610	3117.002.600

- Usable area 47.7m²
- Covered area 67.3m²
- Modules 18



Simplified	Decorated
3118.001.010	3118.001.001
3118.001.310	3118.001.300
3118.001.610	3118.001.600
3118.002.010	3118.002.001
3118.002.310	3118.002.300
3118.002.610	3118.002.600

- Usable area 57.3m²
- Covered area 78.9m²
- Modules 20

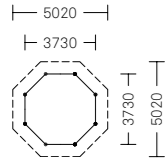
KIOSKS

Octagonal plan

Kiosks with octagonal plan cover a minimum surface area of 20.9m² and a maximum surface area of 105m².

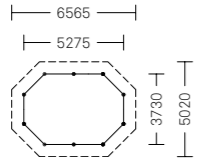
scale 1:400
dimensions in mm

XXXX.	XXX.	XXX
Pianta del chiosco	Tipologia di tetto	Altezza colonne



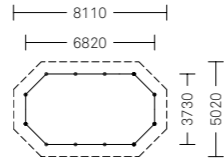
Simplified	Decorated
3142.001.010	3142.001.001
3142.001.310	3142.001.300
3142.001.610	3142.001.600
3142.004.010	3142.004.001
3142.004.310	3142.004.300
3142.004.610	3142.004.600

- Usable area 11.5m²
- Covered area 20.9m²
- Modules 8



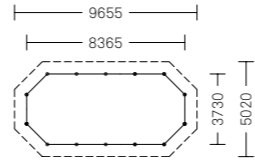
Simplified	Decorated
3143.001.010	3143.001.001
3143.001.310	3143.001.300
3143.001.610	3143.001.600
3143.002.010	3143.002.001
3143.002.310	3143.002.300
3143.002.610	3143.002.600

- Usable area 17.3m²
- Covered area 28.2m²
- Modules 10



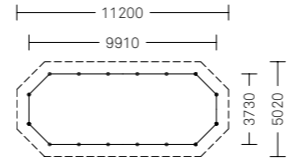
Simplified	Decorated
3144.001.010	3144.001.001
3144.001.310	3144.001.300
3144.001.610	3144.001.600
3144.002.010	3144.002.001
3144.002.310	3144.002.300
3144.002.610	3144.002.600

- Usable area 23m²
- Covered area 36m²
- Modules 12



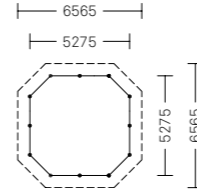
Simplified	Decorated
3145.001.010	3145.001.001
3145.001.310	3145.001.300
3145.001.610	3145.001.600
3145.002.010	3145.002.001
3145.002.310	3145.002.300
3145.002.610	3145.002.600

- Usable area 29m²
- Covered area 44m²
- Modules 14



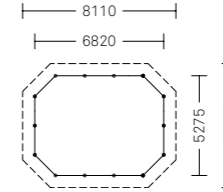
Simplified	Decorated
3146.001.010	3146.001.001
3146.001.310	3146.001.300
3146.001.610	3146.001.600
3146.002.010	3146.002.001
3146.002.310	3146.002.300
3146.002.610	3146.002.600

- Usable area 35m²
- Covered area 52m²
- Modules 16



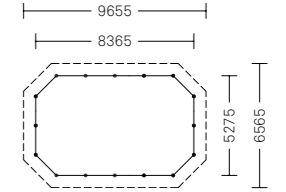
Simplified	Decorated
3162.001.010	3162.001.001
3162.001.310	3162.001.300
3162.001.610	3162.001.600
3162.002.010	3162.002.001
3162.002.310	3162.002.300
3162.002.610	3162.002.600

- Usable area 25.4m²
- Covered area 38.7m²
- Modules 12



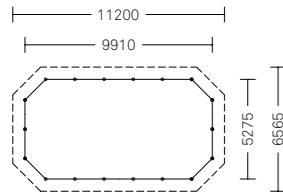
Simplified	Decorated
3163.001.010	3163.001.001
3163.001.310	3163.001.300
3163.001.610	3163.001.600
3163.002.010	3163.002.001
3163.002.310	3163.002.300
3163.002.610	3163.002.600

- Usable area 33.5m²
- Covered area 48.8m²
- Modules 14



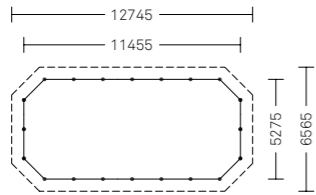
Simplified	Decorated
3164.001.010	3164.001.001
3164.001.310	3164.001.300
3164.001.610	3164.001.600
3164.002.010	3164.002.001
3164.002.310	3164.002.300
3164.002.610	3164.002.600

- Usable area 41.7m²
- Covered area 59m²
- Modules 16



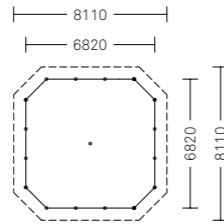
Simplified	Decorated
3165.001.010	3165.001.001
3165.001.310	3165.001.300
3165.001.610	3165.001.600
3165.002.010	3165.002.001
3165.002.310	3165.002.300
3165.002.610	3165.002.600

- Usable area 49.8m²
- Covered area 69.1m²
- Modules 18



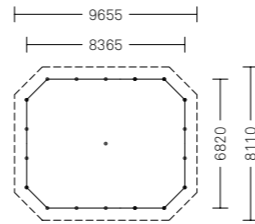
Simplified	Decorated
3166.001.010	3166.001.001
3166.001.310	3166.001.300
3166.001.610	3166.001.600
3166.002.010	3166.002.001
3166.002.310	3166.002.300
3166.002.610	3166.002.600

- Usable area 58m²
- Covered area 79.4m²
- Modules 20



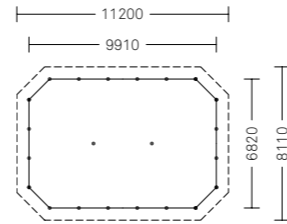
Simplified	Decorated
3170.004.010	3170.004.001
3170.004.310	3170.004.300
3170.004.610	3170.004.600

- Usable area 44.1m²
- Covered area 61.5m²
- Modules 16



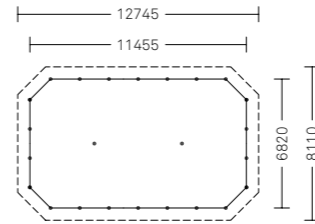
Simplified	Decorated
3171.004.010	3171.004.001
3171.004.310	3171.004.300
3171.004.610	3171.004.600

- Usable area 54.6m²
- Covered area 74m²
- Modules 18



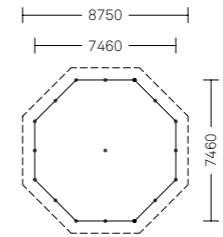
Simplified	Decorated
3172.004.010	3172.004.001
3172.004.310	3172.004.300
3172.004.610	3172.004.600

- Usable area 65.1m²
- Covered area 86.5m²
- Modules 20



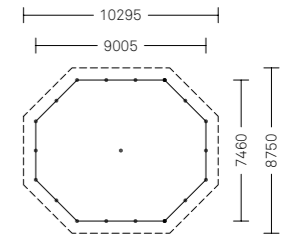
Simplified	Decorated
3173.004.010	3173.004.001
3173.004.310	3173.004.300
3173.004.610	3173.004.600

- Usable area 75.7m²
- Covered area 99.1m²
- Modules 22



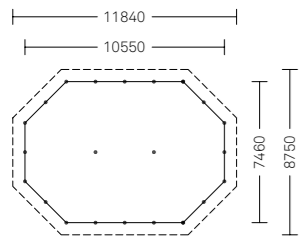
Simplified	Decorated
3180.004.010	3180.004.001
3180.004.310	3180.004.300
3180.004.610	3180.004.600

- Usable area 46m²
- Covered area 63.5m²
- Modules 16



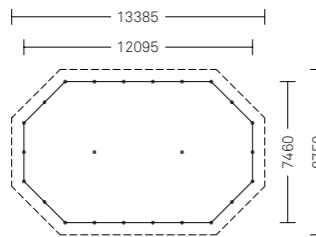
Simplified	Decorated
3181.004.010	3181.004.001
3181.004.310	3181.004.300
3181.004.610	3181.004.600

- Usable area 58m²
- Covered area 77.5m²
- Modules 18



Simplified	Decorated
3182.004.010	3182.004.001
3182.004.310	3182.004.300
3182.004.610	3182.004.600

- Usable area 69m²
- Covered area 91m²
- Modules 20



Simplified	Decorated
3183.004.010	3183.004.001
3183.004.310	3183.004.300
3183.004.610	3183.004.600

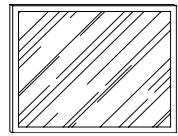
- Usable area 80.6m²
- Covered area 105m²
- Modules 22

KIOSKS

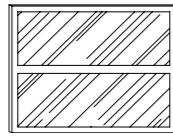
Accessories

All kiosks up to 12 modules are supplied in solution with one-shutter entrance door, fixed perimetral windows, spring rewinding mechanism.

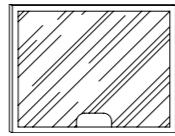
Windows



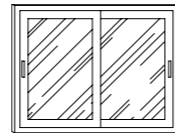
Fixed window



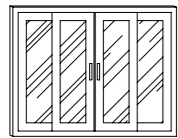
Fixed window with central transverse



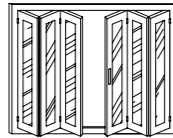
Fixed window with service window



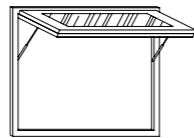
Window with 2 sliding shutters



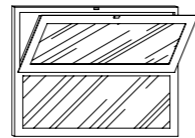
Window with 4 sliding shutters



Window with 2 shutters with hinged opening

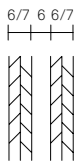


Window with 2 piston spring opening shutters



Window with shutter openable above and fixed below

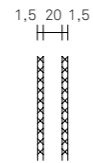
Optional glass and plugging



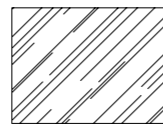
Glass chamber 6/7+6+6/7
 • Stratified glass (6/7mm)
 • Air (6mm)
 • Stratified glass (6/7mm)



Glass chamber 6/7+9+4
 • Stratified glass (6/7mm)
 • Air (9mm)
 • Glass (4mm)

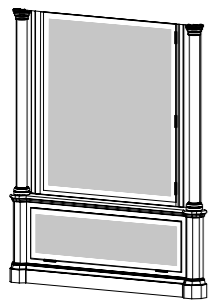


• Galvanized steel sheet (1.5mm)
 • Insulation material (20mm)
 • Galvanized steel sheet (1.5mm)

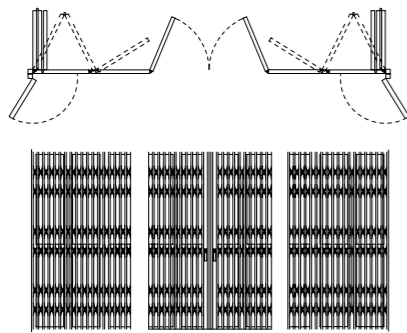


• Glazed glass for door or window
 • Milky white glass for door or window

Optional closure solutions

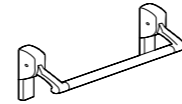


Module for display window or applicable back-lit sign on the module

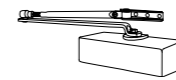


Folding gate in galvanized steel, with hinged opening lock on upper and lower track (convenient two-module space-saving feature)

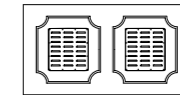
Optional accessories



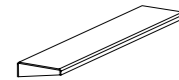
Emergency handle



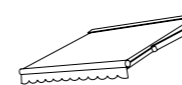
Door closing spring with sliding arm and aluminium body



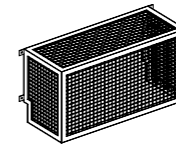
Ventilators in stainless steel for plugging



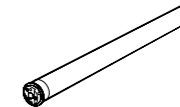
Window sill in galvanized and painted steel sheet



Sun visors with manual or motor-operated function



Air conditioner cover in galvanized and painted steel

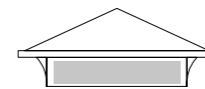


Electrical motor for rolling shutters

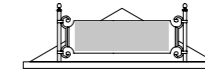
Type of signs



External boxed sign with internal illumination to install above the edging

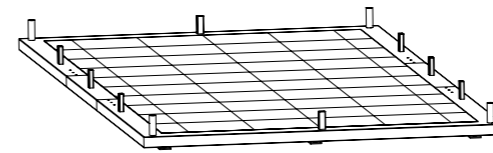


Sign integrated in the band under the roof with internal illumination, applicable for every module



Decorated sign holder, with panel in white polycarbonate, to install on the peak of the roof (Panel dimension 1,346x400mm)

Base



Base with wooden platform or floating floor in porcelain stoneware (in the absence of foundations it is possible to install the kiosk with this platform)



3183.004.600

Location: Noventa di Piave, ITA

Kiosks /
BAR



3183.004.600

Location: Noventa di Piave, ITA

Kiosks /
BAR



3143.002.600

Location: Los Angeles, USA

Kiosks /
Newspaper stand



3143.002.600

Location: Los Angeles, USA

Kiosks /
Commercial activities



3180.004.600

Location: Grumello, ITA

Kiosks /
Commercial activities



Kiosks /
Commercial activities

3400.000	3143.002.600
3144.002.600	3145.002.600

Location: Portland, US



3110.001.300

Location: Gatteo Mare, ITA



3143.001.600

Location: Olanda, NLD

Kiosks /
Newspaper stand



3104.005.001

Location: Fortunago, ITA



3104.005.001

Location: Milano, ITA

Kiosks /
Info points



3180.004.600

Location: Noventa di Piave ITA

Kiosks /
Info point

Neri S.p.A.
S.S. Emilia 1622
47020 Longiano (FC) · Italy
T +39 0547 652111
F +39 0547 54074

Neri North America Inc.
1547NW 79th Avenuez
Miami, FL 33172, USA
T +1 786 315 4367
F +1 786 693 7763

Neri Lighting India Pvt. Ltd.
Plot no 46-A, Malur 4th
Phase,
KIADB Industrial area,
Malur – Karnataka · 563130

Neri S.p.A. (DMCC Branch)
29-29 Reef Tower Cluster O
JLT – Jumeirah Lake Towers
P.O. Box: 5003348 ·
Dubai · UAE
T +971 4 448 7246
F +971 4 448 7112

Publisher: Neri S.p.A.
Design: Neri S.p.A.
Printed by: Pazzini
Stampatore Editore Srl

Neri is a registered trademark.
Neri protects its products,
filing invention and design
patents.

We reserve the right to
make changes in design and
technology for the customers
interest. Furthermore
products may have different
characteristics for several
countries.

©February 2023 · Neri S.p.A.

