

Project location:	
Project name:	
Model #:	4100.125.601
Date	

**Use**

Suitable support for suspended light fixtures.

**Materials**

Made in EN-GJL HB175 cast iron and S235J UNI EN 10025 steel hot dip galvanized according to UNI EN ISO 1461.

**Protection of surfaces**

Please refer to the specification on painting procedures of the materials.

**Dimensions and weight**

Height 3' 1 1/4"; width 4' 8 1/4".

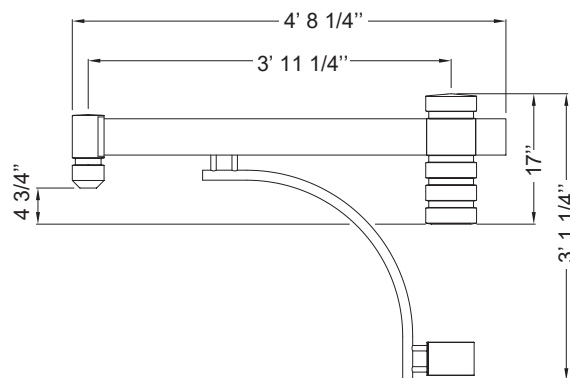
Weight 90.38 lb.

**Description**

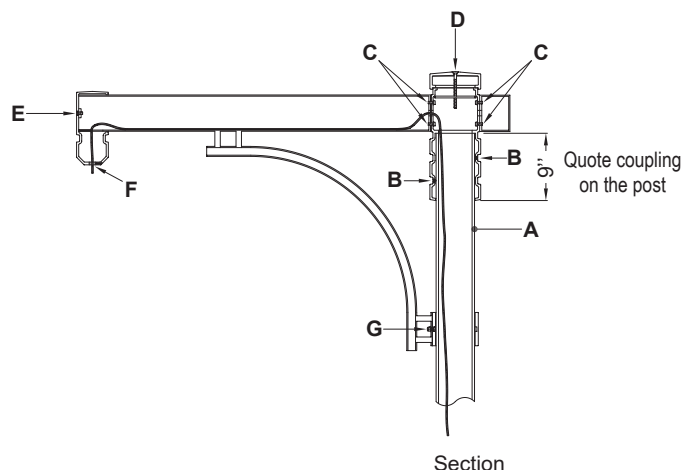
The top section is made up of the following elements:

- 1°) An element in cast iron, height 14 3/4", in the form of a smooth cylinder (diam. 6 3/4") decorated with three grooves. The upper part has a junction for attaching a bracket. The element is secured to the core (A) with six stainless steel M10 grub screws (B).
- 2°) A decorative element in hot-galvanized steel tube, length 4" and cross-section 4 3/4" x 1 2/4", secured with two M10 screws (C) from inside element (1°), opposite the main bracket (4°).
- 3°) A cast iron terminal, height 2 1/4", in the form of a smooth cylinder (diam. 6 3/4"). This element is secured with an M8 screw (D) to the element (1°).
- 4°) A bracket in hot-galvanized steel tube, length 3' 10", height 34", composed of a tube with rectangular cross-section (4 3/4" x 1 2/4") and a lower tube (diam. 1 1/4") with a curve radius of 20 1/4". The two tubes are welded together with two pegs. The bracket is secured with two M10 screws (C) from inside element (1°) and with one M8 screw (G) to the lower ring (6°).
- 5°) A cast iron element height 9 2/4" in the form of a smooth cylinder (diam. 4 1/4") decorated with a groove and a tapered bottom with a 3/4" GAS junction (F) for attaching the light fixture. This element is fitted into the main bracket (4°) and is secured to this with an M8 screw (E).
- 6°) A ring in hot-galvanized steel, height 4 1/4", diam. 6", to which the lower end of the bracket is fixed. The ring is secured to the core (A) with two M8 grub screws.

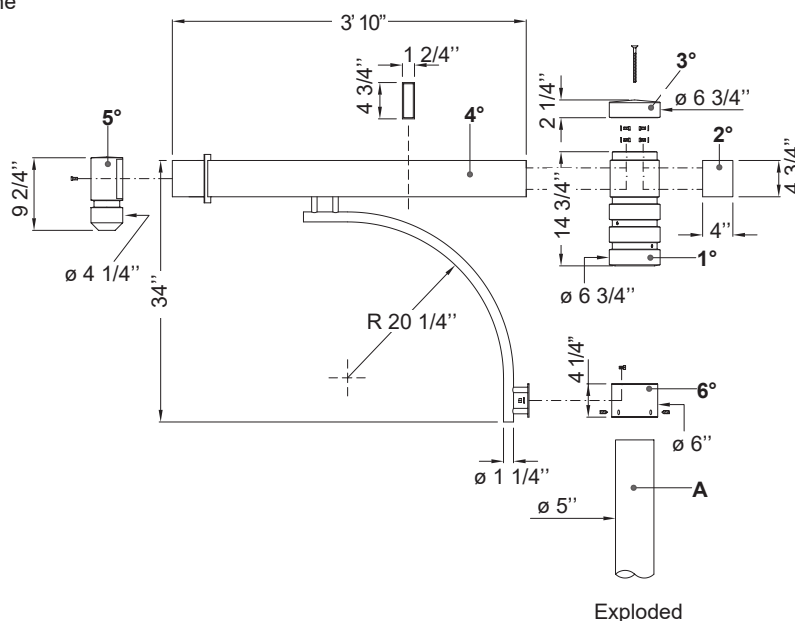
When assembled the top section projects for 3' 11 1/4" to the junction for the light fixture.



Elevation view



Section



Exploded