

Project location:			
Project name:			
Model #:	4200.222.601	Date	

Use
Suitable support for suspended light fixtures.

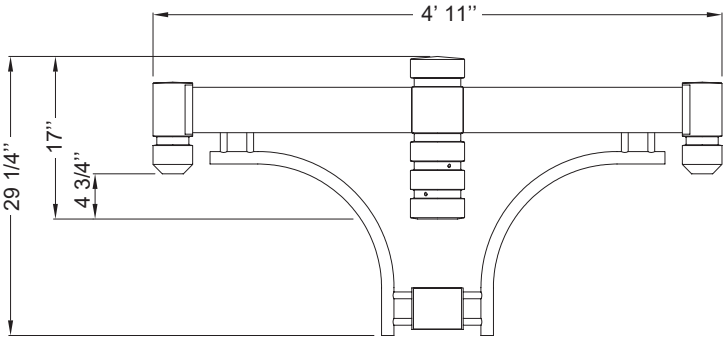
Materials
Made in EN-GJL HB175 cast iron and S235J UNI EN 10025 steel hot dip galvanized according to UNI EN ISO 1461.

Protection of surfaces
Please refer to the specification on painting procedures of the materials.

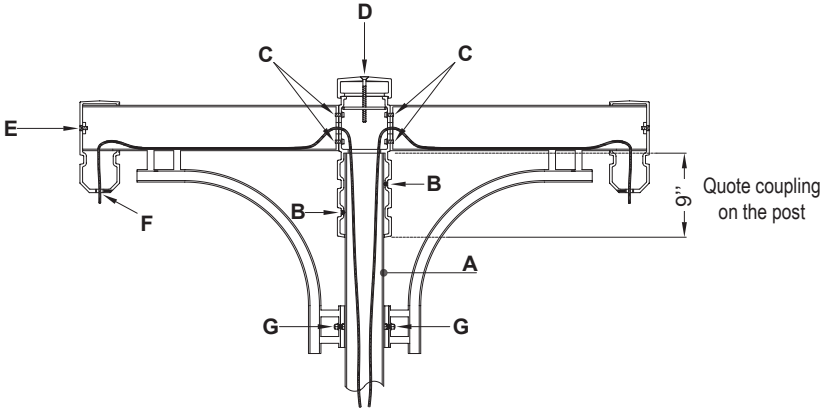
Dimensions and weight
Height 29 1/4"; width 4' 11".
Weight 103.62 lb.

- Description**
The top section is made up of the following elements:
- 1°) An element in cast iron, height 14 3/4", in the form of a smooth cylinder (diam. 5 3/4") decorated with three grooves. The upper part has a junction for attaching two brackets at 180° to each other. The element is secured to the core (A) with six stainless steel M10 grub screws (B).
 - 2°) A cast iron terminal, height 2 1/4", in the form of a smooth cylinder (diam. 5 3/4"). This element is secured with an M8 screw (D) to the element (1°).
 - 3°) Two brackets in hot-galvanized steel tube, each length 26 3/4", height 25 2/4", and composed of a tube with rectangular cross-section (4 3/4" x 1 2/4") and a lower tube (diam. 1 1/4") with a curve radius of 12 3/4". The two tubes are welded together with two pegs. Each bracket is secured with two M10 screws (C) from inside element 1 and with one M8 screw (G) to the lower ring (5°).
 - 4°) Two cast iron elements, each height 9 2/4" and in the form of a smooth cylinder (diam. 4 1/4") decorated with a groove and a tapered bottom with a 3/4" GAS junction (F) for attaching the light fixture. These elements are fitted into the brackets (3°) and are secured with one M8 screw each (E).
 - 5°) A ring in hot-galvanized steel, height 4 1/4", diam. 5", to which the lower end of the bracket is fixed. The ring is secured to the core (A) with two M8 grub screws.

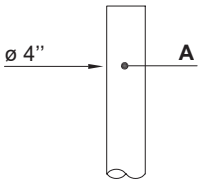
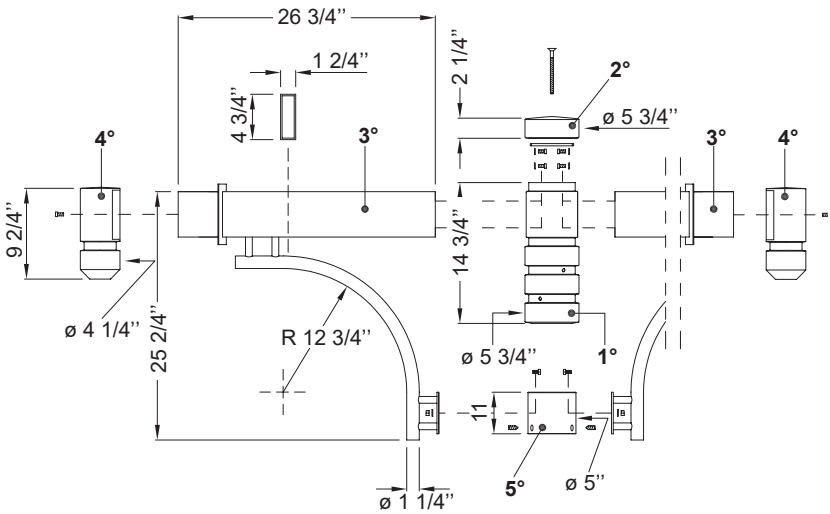
When assembled the top section projects for 27 2/4" to the junction for the light fixture.



Elevation view



Section



Exploded