

Project location:			
Project name:			
Model #:	4202.220.500	Date	

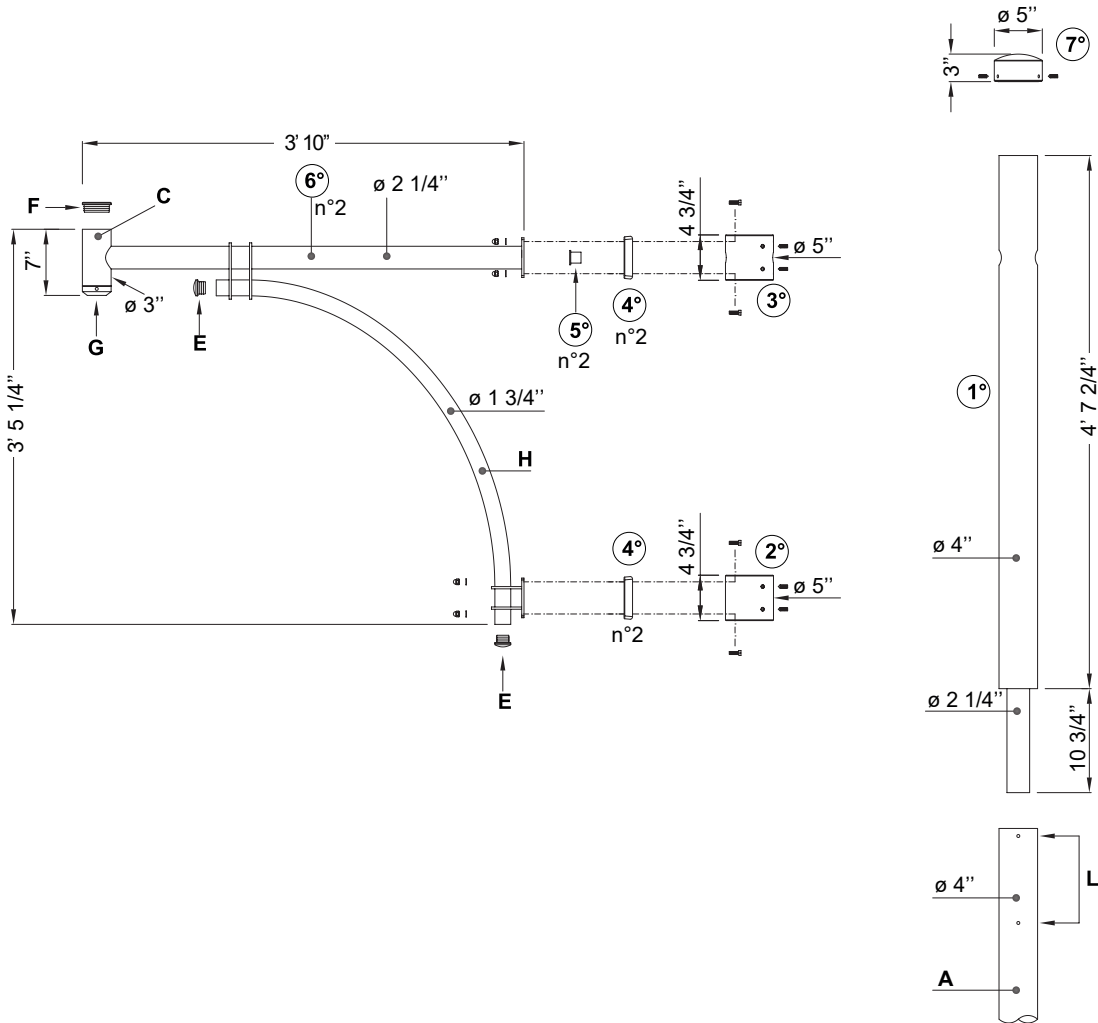
Use
Suitable support for suspended light fixtures.

Materials
Made in steel (S235J UNI EN 10219-1), hot dip galvanized in according to UNI EN ISO 1461.

Description
The top section is made up of the following elements:
The top is composed as follows:
1°) A steel tube to insert on the post (A), composed of two tubes welded together having the following dimensions : diam . 4" x 4' 7 2/4" - diam. 2 1/4" x 10 3/4". Equipped with holes (diam. 1 2/4") for the passage of the power cord. The fixing is obtained with six grains M10 in stainless steel, located at the top of the post (L).
2°) A lower support ring in galvanized steel , with four grains M8 in stainless steel, for fixing to the post (A).
3°) A upper support ring in hot galvanized steel, with a hole (diameter 1 1/4") for the passage of the power cable, equipped with four grains M8 in stainless steel for fixing to the element (1°)
4°) Four rectangular steel plates, to be interpose between the rings (2°- 3°) and the arm (6°).
5°) Two cable sleeve in plastic material, to be interpose between the arms and the upper plates (4°).
6°) Two arms in hot galvanized steel (3' 10" lenght , 3' 5 1/4" high), each consisting of a horizontal tube (diam. 2 1/4"); a terminal tube (C) hight 7" (diam. 3") with an internal thread G3/4"(G) for fixing the luminaire, with the top cap of inspection (F) in plastic material; a lower tube curved (diam. 1 3/4") (H), fixed to the tube by means of two horizontal plates spaced. At the ends is closed by plugs (E) in plastic material.
Each arm is fixed with 4 screws M8 (B) to the rings (2° and 3°).
7°) An end cap casting steel (high 3"- diam. 5") fixed to the tube (1°) with 3 grains M6 in stainless steel.

Protection of surfaces
Please refer to the specifi cation on painting procedures of the materials.

Dimensions - Weight
Height 4' 8 3/4"
Width 3' 11 1/4"
Weight 97.88 lb



Project location:			
Project name:			
Model #:	4202.220.500	Date	

