

Project location:			
Project name:			
Model #:	4208.281	Date	

DESCRIPTION

Description

The top section is made in UNI EN 1561 cast iron, and corresponds in shape, size and ornamentation to the diagrams, which are an integral part of the specifications.

The top section is composed as follows:

1°) A cast iron element height 13 1/4" with a circular base (diam. 9 3/4") surmounted by a fillet and a junction. The central section is in the form of a cube (length of sides 4"), with joints on two faces for attaching the brackets at 180° to each other. The two other faces are decorated with rosettes. Above the central section is a sphere (diam. 4") decorated in the lower part with four leaves. The element is fixed to the column (B) with three M10 stainless steel bolts (C), and rotation is prevented by a bolt (H) screwed into a slot in the core (A).

2°) Two brackets protruding 23 2/4", height 22 3/4", with a curve radius of 14 1/4". Each bracket is decorated with eight flutes along the curved section (thickness 1 3/4") and a cube at the end, which is in turn decorated with rosettes on two faces. The brackets are attached to the first element with four M8 stainless steel bolts each (D). At the upper end each bracket has a 3/4" GAS threaded sleeve (E) with stainless steel nut and rose for attaching the light fixture. Inside the brackets are tubes for the passage of power cables of diameter 2/4".

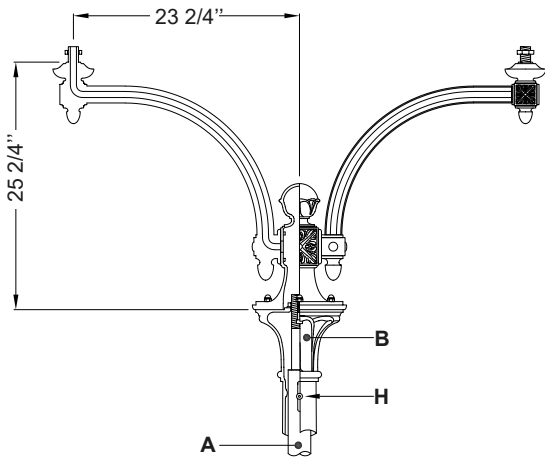
Each assembled bracket protrudes for 23 2/4" to the light fixture attachment.

The total height is 25 2/4".

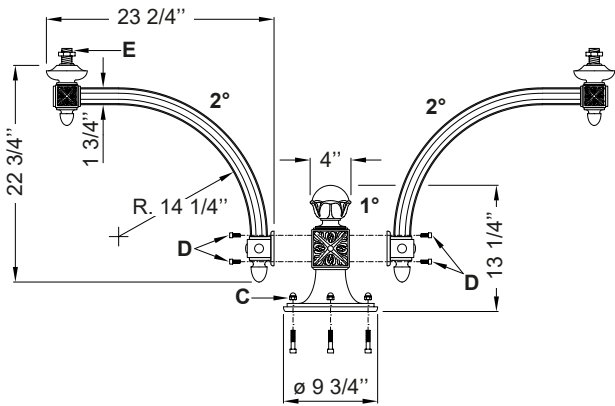
Protection of surfaces

Please refer to the specification on painting procedures of the materials.

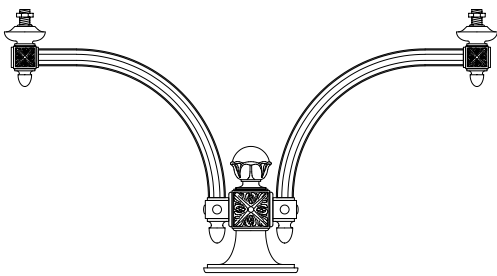
DRAWINGS



Section



Exploded



Prospect