

Project location:			
Project name:			
Model #:	PO A03 15 RS Neri grey	Date	

Compliance:

- Compliant with AASHTO 2015 standard.
- Design for wind speed 180 MPH
- * design criteria: 2020 Florida Building Code, Risk Category II, Exposure



Dimensions - Weight:

Height	Diameter	Projection	Weight
15'	4" - 3"	-	46 lb

Materials:

- Aluminum 6061-T6 (ASTM B221-20).
- Cast aluminum 356-T6.

Description:

Lamp post in aluminum with circular section, made up of two tubes with the following dimensions: tube Ø 4"x 12' 7" (A); tube Ø 3"x 2' 3 1/4" (B); tube Ø 2 3/8" x 4". Weight 46 lb.

The post is equipped with:

- a square flange;
- a hand hole (C) 2" X 4";
- a hand hole cover in cast aluminum.

Fastening:

- square flange for fastening with anchor bolts to the foundation plinth (P)

Dimensions	Thickness	Bolt Holes	Center hole opening
8" X 8"	3"	n. 4 X 1" X 1 1/2"	4"

Measures and material for anchor bolts:

D - (Diameter)	L - (Lenght)	H - (Hooks)	F - (Threaded)
3/4"	18"	3"	4"

- Hot dip galvanized steel to ASTM F1554-55 Standard.
- Anchor bolts must be with a minimum guaranteed yield strength of 50,000 psi, and to have upper part threaded.
- Keep 3.00" of threading above ground for nuts and washer.
- N. 8 hex nuts and N.8 flat washers included.

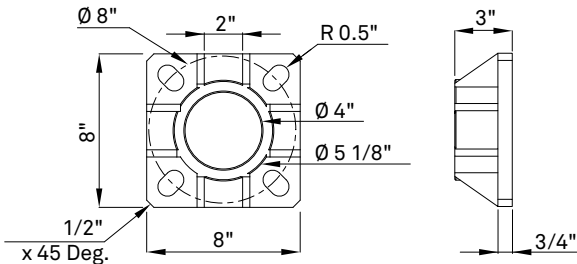
Finish:

- Standard colour is dark grey NERI type.
- Information about paint steps used on this product in specific technical sheet.

Note:

- NERI will not accept any responsability for incorrect anchorage placement.

Flange - Detail:



Scale: 1/10

